

Outdoor IP67 OMNI Antenna For LTE Wide Band

698~960 / 1710~2170 / 2300~2690MHz

GTT EU P/N: OS-LTE-11-C0



✓ RF Specification

- Frequency Range: 698~960 / 1710~2170 / 2300~2690 MHz
- Polarization: Linear, Vertical
- HPBW / Horizontal: 360°
- HPBW / Vertical: 90°
- Peak Gain: -1.8~3.5dBi
- Efficiency: 33% / 52% / 46% Min.
- VSWR: 4.0 Max.:1
- Power Handling: 2W(cw)
- Impedance: 50 Ohms
- Connector: N Plug

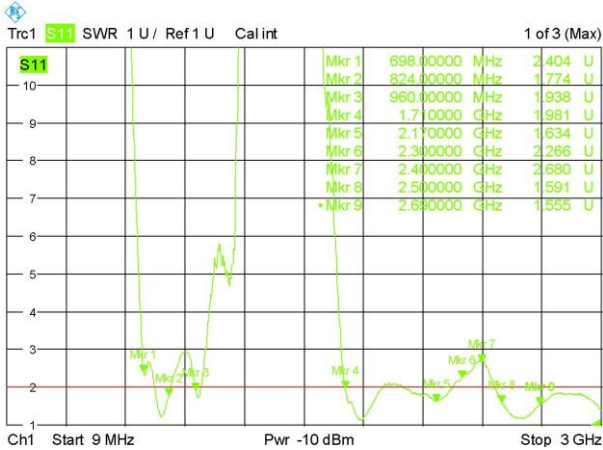
✓ Environmental & Mechanical Characteristics

- Temperature: -40°C to +70°C
- Humidity: 95% @55°C
- Antenna Housing Color: White
- Antenna Housing Material: ASA
- Weight : 60.5 gw
- Dimensions: 178.0(L)x22.0(W)mm

Performance Summary

Passive Measurement: VSWR, Gain , Efficiency

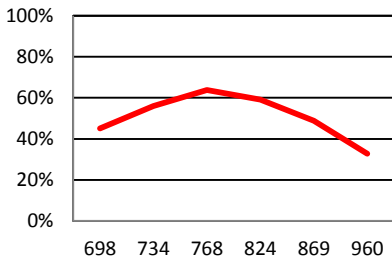
Frequency(MHz)	698~960	1710~2170	2300~2690
VSWR	4.0 Max. : 1		



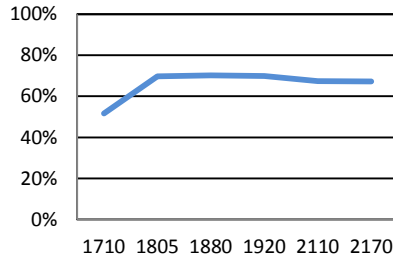
SUMMARY

EFFICIENCY

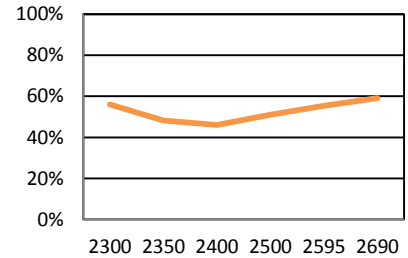
698MHz~960MHz



1710MHz~2170MHz

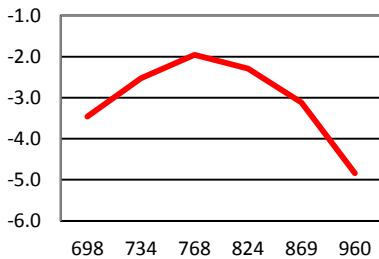


2300MHz~2690MHz

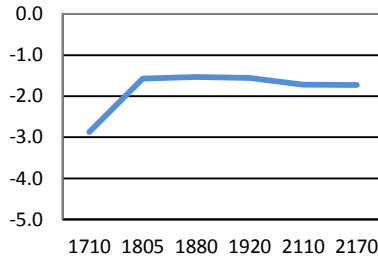


Average Gain

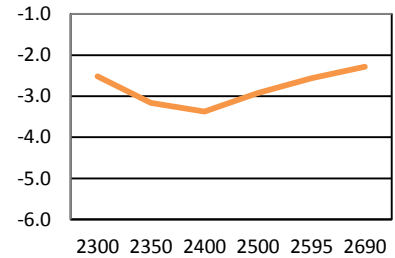
698MHz~960MHz



1710MHz~2170MHz

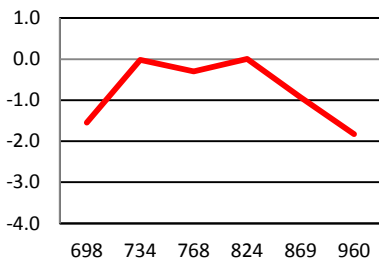


2300MHz~2690MHz

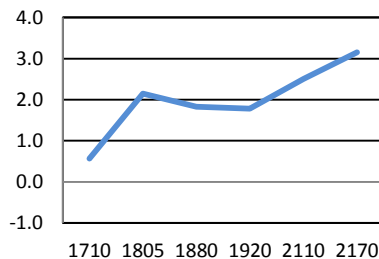


Peak Gain

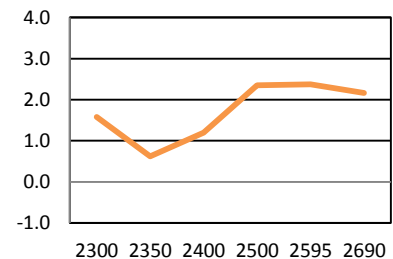
698MHz~960MHz



1710MHz~2170MHz



2300MHz~2690MHz



Radiation Pattern

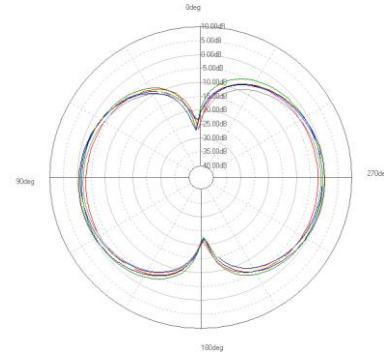
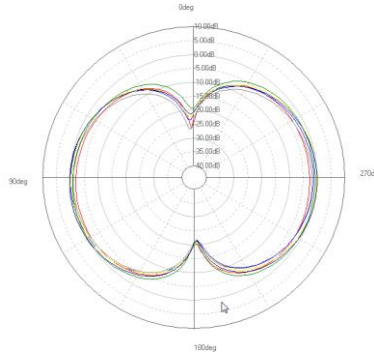
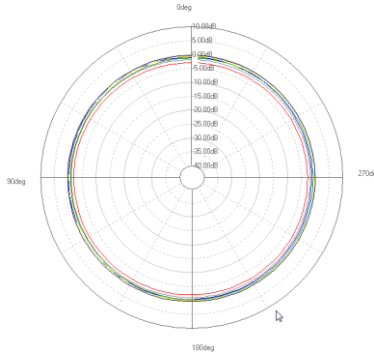
XY-plane

YZ-plane

ZX-plane

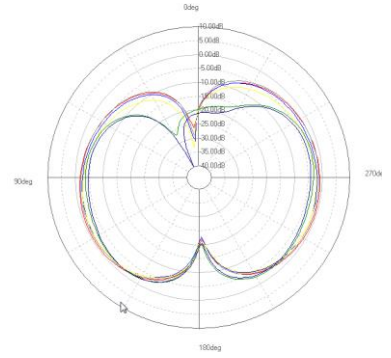
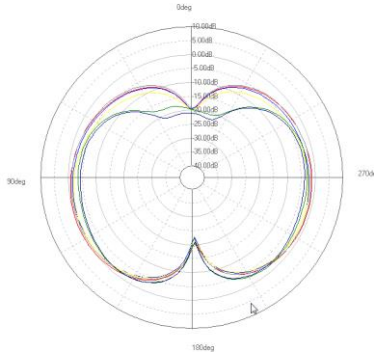
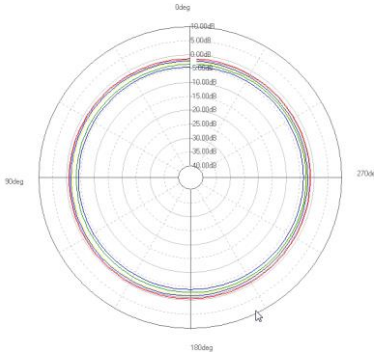
Legend

- 698.00(MHz)
- 710.00(MHz)
- 734.00(MHz)
- 751.00(MHz)
- 768.00(MHz)
- 798.00(MHz)



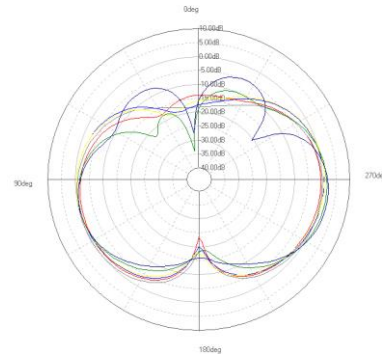
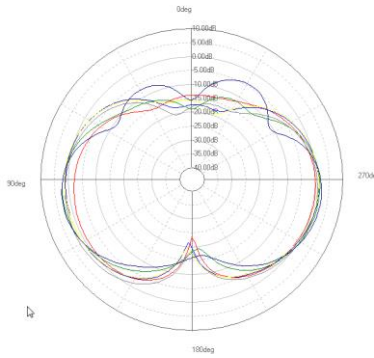
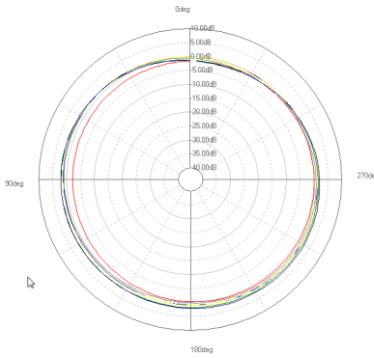
Legend

- 824.00(MHz)
- 849.00(MHz)
- 869.00(MHz)
- 894.00(MHz)
- 925.00(MHz)
- 960.00(MHz)



Legend

- 1710.00(MHz)
- 1805.00(MHz)
- 1880.00(MHz)
- 1920.00(MHz)
- 2110.00(MHz)
- 2170.00(MHz)



Legend

- 2300.00(MHz)
- 2350.00(MHz)
- 2400.00(MHz)
- 2500.00(MHz)
- 2595.00(MHz)
- 2690.00(MHz)

