

cell type: Li-Ion
cell size: 18650
built-in cell: LG INR 18650 B4 2600mAh

Conditions

nominal voltage: 3.6 V

capacity
 nominal: 2600 mAh discharge at 0.2C
 minimum: 2500 mAh discharge at 0.2C
 2350 mAh discharge at 1C
 ta: 20°C; EV(Discharge End Voltage): 2.75V

discharge
 max. continuous discharge current: 5000 mA ta: 0...45°C
important: avoid cell temperature above 60°C

discharge end voltage: ≥ 2.75 V (recommended)
important: avoid long time deep discharge

charge
 charging method: CC - CV (Constant Current - Constant Voltage)

initial charge current: 520 mA at standard charge
 1300 mA at rapid charge

charge end voltage: 4.2 V ± 50mV

charge cut off by time: 6 h at standard charge
 3 h at rapid charge
 by current drop: 26 mA (0.01C)

internal resistance: ≤ 120 mOhms at 1kHz, sine wave measurement according to IEC 896-2

energy: 9.36 W

safety board protection functions

overcharge cut off voltage: 4.325 V ± 0.05V
 deep disch.cut off voltage: 2.5 V ± 0.1V
 overload cut off current: 8 A ± 2A

life time expectance
 (C>70% of min. capacity) ≥ 300 cycles at 0.5C charge/discharge rate

self discharge: ≤ 2 %/month at 20°C
 ≤ 5 %/month at 30°C
 ≤ 10 %/month at 40°C

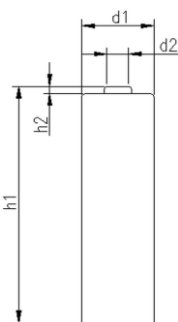
ambient temperature range:

0...45 °C charge
 0...60 °C discharge
 - 20...25 °C storage max. 1year
 - 20...45 °C storage max. 3months

preferred charge state for long time storage: 30...50%


mechanical specifications
 cell dimensions (incl. sleeve)

diameter d1: 18.5 ± 0.3 mm
 diameter d2: 3.5 ± 0.5 mm
 height h1: 70.0 - 2 mm
 height h2: 1.5 + 0.3 mm
 weight: 46 ± 3 g



Blister card



	ANSMANN Specifications for model:	Li - Ion Battery 3.6V 2600mAh with Protection Board (PCB) inside
	data sheet no. / part no.	1307-0000
	supplier no.	703365
	author / date	TG / 30.01.2018