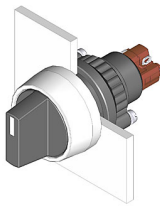


EAO – Your Expert Partner for Human Machine Interfaces

14-506.02502 - Selector switch actuator 2 positions

14-506.02502 - Selector switch actuator 2 positions



Attention: The preview is based on a sample product. This can differ from your current configuration.

Mounting

Mounting cut-out
Design Ø 22,3 mm
raised

Front

Front dimension
Front shape
Front bezel colour
Front bezel material Ø 29 mm
round
natural anodized
Aluminium

Other Attributes

Weight 0,024 kg

Operating-/Indication part

Lever illumination
Lever colour
Lever material
Lever shape
Switching angle non-illuminative
black
Plastic
short
90° right

IP-Rating

Front protection IP67

Connection Method

Terminal Solder

Actuator

Switching action Rest - Maintain

Switching element

Rotary positions
Switching system
Switching current
Contacts
Contact material
Switching voltage 2
Snap-action switching element
5 A
1 NC + 1 NO
gold-plated silver
250 V AC

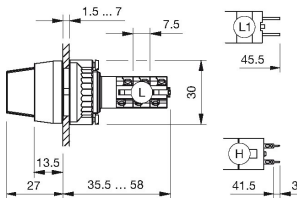
Function

Selector switch

EAO – Your Expert Partner for Human Machine Interfaces

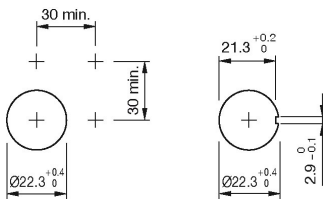
14-506.02502 - Selector switch actuator 2 positions

Dimensions

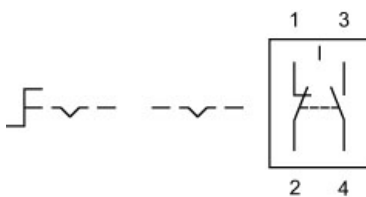


L = Solder terminal

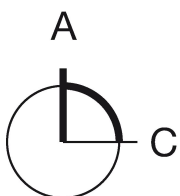
Mounting cut-outs



Wiring diagram



Switching positions



Additional information

The colour of anodized aluminium parts can vary due to technical production reasons

Legend

Contacts: NC = Normally closed, NO = Normally open
Switching action: A = Rest, C = Maintained