

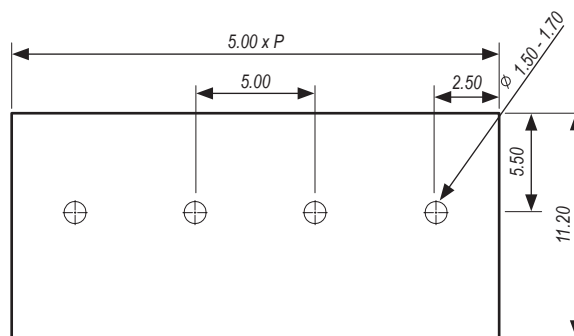
Terminal Block Rising Clamp Vertical 20.700M/xx-P

- 300V 20A UL
- UL94-V0
- PA66
- 5.00mm Pin Pitch
- RoHS Compliant
- xx = Number of Poles (available from 2~24 poles)

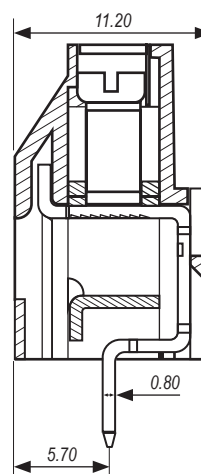
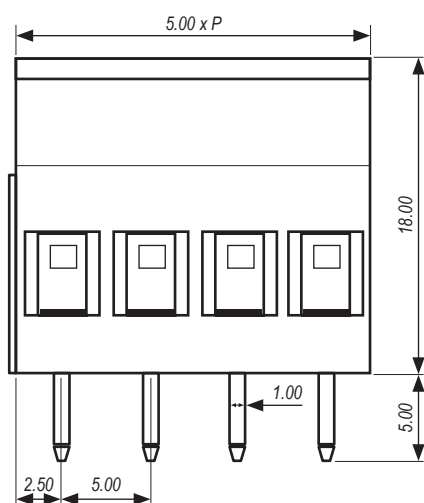


Technical Data

Pitch	5.00mm
UL Rating	300V 20Amps
IEC Rating	300V 24Amps
Solder Pin	Brass, Tin Plated
Wire Range	24-12AWG (2.5mm ²)
PCB Hole Diameter	1.5mm-1.7mm
Screw	M2.5 Steel (Zinc Plated)
Screw Torque	0.4Nm
Insulation Voltage	AC2000V / 1 Min
Initial Contact Resistance	20mΩ
Insulation Resistance	500MΩ / DC500V
Temperature Range	-40 to +105°C
Max Soldering	n/a



PCB Layout



Dimensions shown in mm P = No of Poles

Supplied in green as standard
Other colour options and printing may be available depending upon quantity
Please contact IMO for further information