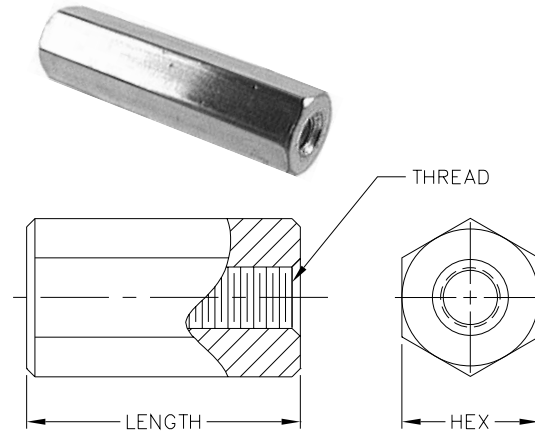


# Brass Hex Standoffs

Maximum Thread Depth				
Thread Size	4-40	6-32	8-32	10-32
Thread Length Tapped Thru	1"	1"	1"	1"
Thread Length Tap each end	1/4"	7/16"	7/16"	1/2"

- Standard **nickel plating** provides a hard, bright, non-oxidizing surface which will stand up to difficult ambient conditions.
- Alternative plating finishes, odd sizes, taps or threads.



LENGTH		O.D.	THREAD				LENGTH		O.D.	THREAD			
			#2-56	#4-40	#6-32	#8-32				#2-56	#4-40	#6-32	#8-32
0.125	1/8	3/16	9130	9145			.687	11/16	3/16	9139	9154		
		1/4		8820	8821	8822			1/4		8838	8839	8840
0.187	3/16	3/16	9131	9146			.750	3/4	3/16	9140	9155		
		1/4		8823	8824	8825			1/4		2333	2323	2328
0.25	1/4	3/16	9132	9147			.812	13/16	3/16	9141	9156		
		1/4		2330	2320	2325			1/4		8841	8842	8843
0.312	5/16	3/16	9133	9148			.875	7/8	3/16	9142	9157		
		1/4		8826	8827	8828			1/4		8844	8845	8846
0.375	3/8	3/16	9134	9149			.937	15/16	3/16	9143	9158		
		1/4		2331	2321	2326			1/4		8847	8848	8849
0.437	7/16	3/16	9135	9150			1	1	3/16	9144	9159		
		1/4		8829	8830	8831			1/4		2334	2324	2329
0.5	1/2	3/16	9136	9151			1.125	1-1/8	1/4		8820R	8821R	8822R
		1/4		2332	2322	2327	1.250	1-1/4			8820S	8821S	8822S
0.562	9/16	3/16	9137	9152			1.375	1-3/8			8820T	8821T	8822T
		1/4		8832	8833	8834	1.500	1-1/2			8820U	8821U	8822U
.625	5/8	3/16	9138	9153			1.625	1-5/8			8820V	8821V	8822V
		1/4		8835	8836	8837	1.75	1-3/4			8820W	8821W	8822W
						1.875	1-7/8			8820X	8821X	8822X	
						2	2			8820Y	8821Y	8822Y	

Brass Hex Standoffs