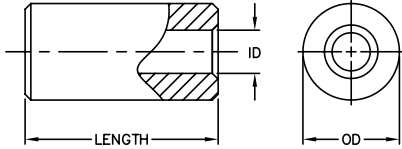


Aluminum Round Spacers



- Standard clear chromate finish. Alternative finishes are also available in quantity.
- Aluminum spacers offer a light-weight alternative to standard brass counterparts.

SCREW NO.	MAJOR DIA.	HOLE SIZE
#2	0.086	0.093
#3	0.099	0.100
#4	0.112	0.120
#5	0.125	0.130
#6	0.138	0.144
#8	0.164	0.169
#10	0.190	0.196
#12	0.216	0.220

LENGTH	O.D.	I.D.				LENGTH	O.D.	#4	#6	#8	#10			
		#4	#6	#8	#10									
0.125	1/8	1/4	8480	8500	8520	0.750	3/4	1/4	8485	8505	8525			
		5/16		9389A	9390A			8540	5/16		9389L	9390L	8545	
		3/8			9391A			9392A	3/8			9391L	9392L	
0.187	3/16	1/4	9200	9207	9214	0.812	13/16	1/4	9205	9212	9219			
		5/16			9389B			9390B	9221	5/16		9389M	9390M	9226
		3/8			9391B			9392B	3/8			9391M	9392M	
0.250	1/4	1/4	8481	8501	8521	0.875	7/8	1/4	8486	8506	8526			
		5/16			9389C			9390C	8541	5/16		9389N	9390N	8546
		3/8			9391C			9392C	3/8			9391N	9392N	
0.312	15/16	1/4	9201	9208	9215	0.937	15/16	1/4	9206	9213	9220			
		5/16			9389D			9390D	9222	5/16		9389P	9390P	9227
		3/8			9391D			9392D	3/8			9391P	9392P	
0.375	3/8	1/4	8482	8502	8522	1	1	1/4	8487	8507	8527			
		5/16			9389E			9390E	8542	5/16		9389Q	9390Q	8547
		3/8			9391E			9392E	3/8			9391Q	9392Q	
0.437	7/16	1/4	9202	9209	9216	1.125	1 1/8	1/4	8480R	8500R	8520R			
		5/16			9389F			9390F	9223	5/16		9389R	9390R	8540R
		3/8			9391F			9392F	1/4	8488	8508	8528		
0.500	1/2	1/4	8483	8503	8523	1.250	1 1/4	5/16		9389S	9390S	8548		
		5/16			9389G			9390G	8543	1/4	8480T	8500T	8520T	
		3/8			9391G			9392G	5/16		9389T	9390T	8540T	
0.562	9/16	1/4	9203	9210	9217	1.375	1 3/8	1/4	8480U	8500U	8520U			
		5/16			9389H			9390H	9224	5/16		9389U	9390U	8549
		3/8			9391H			9392H	1/4	8480V	8500V	8520V		
0.625	5/8	1/4	8484	8504	8524	1.500	1 1/2	5/16		9389V	9390V	8540V		
		5/16			9389J			9390J	8544	1/4	8480W	8500W	8520W	
		3/8			9391J			9392J	5/16		9389W	9390W	8550	
0.687	11/16	1/4	9204	9211	9218	1.750	1 3/4	1/4	8480X	8500X	8520X			
		5/16			9389K			9390K	9225	5/16		9389X	9390X	8540X
		3/8			9391K			9392K	1/4	8480Y	8500Y	8520Y		
2.000	2	1/4				1.875	1 7/8	5/16		9389Y	9390Y	8551		
		5/16						1/4	8491	8511	8531			