



SERIES 280HT CARD LOK

RECOMMENDED GAP WIDTH

PCB + 10.8 mm (.425 in)

RECOMMENDED TORQUE

113 N-cm (10 in-lbs)

With "L" option 163 N-cm (14 in-lbs)

WEIGHT

2.70 g/cm (.241 oz/in)

MATERIALS AND FINISH

BODIES AND WEDGES

Material: Aluminum Alloy 6061-T6 per ASTM-B221 or AMS-QQ-A-200/8

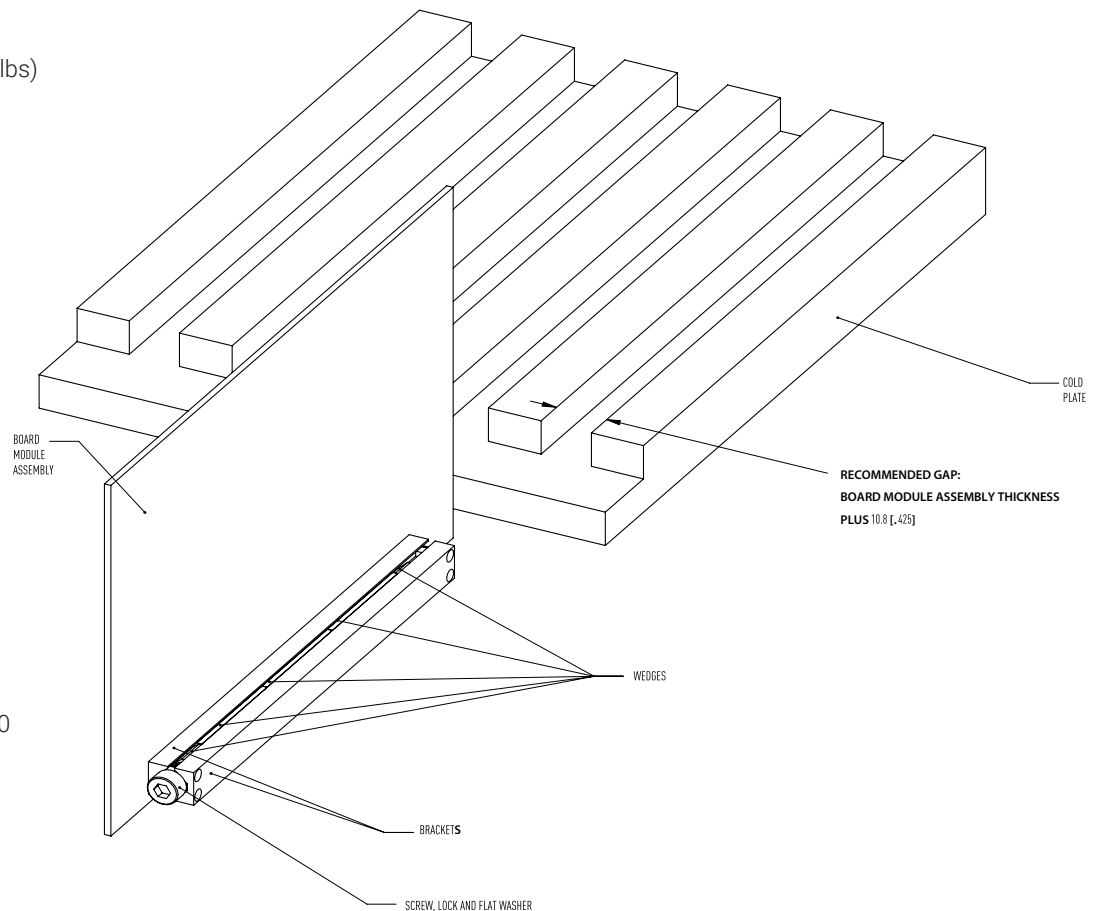
Finish: See finish table on opposite page

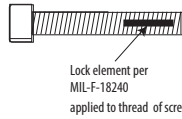
SCREW, LOCK AND FLAT WASHER

.09-in. or 2.5-mm hex. socket head cap screw, depending on mounting configuration

Material: Stainless steel

Finish: Passivated per AMS2700

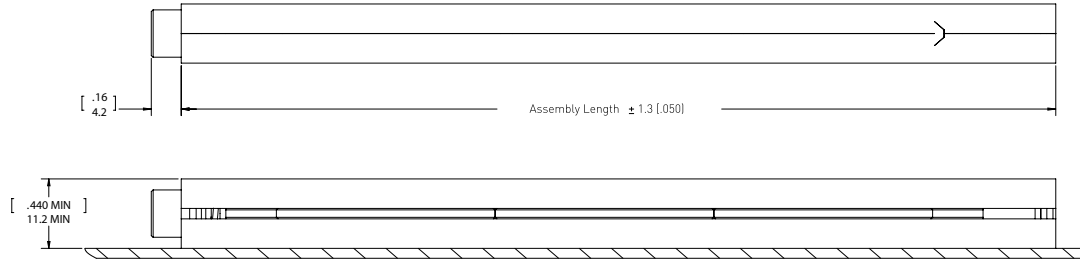
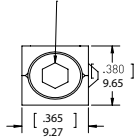




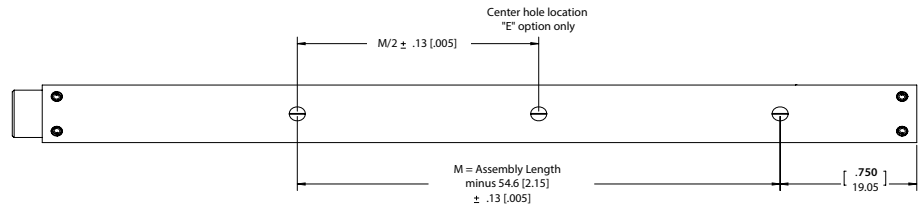
Detail "L"

Provides prevailing torque for resistance to loosening from shock and vibration. Adds 50 N-cm (4 in-lbs) torque to assembly.

3.57 [1.40] Hex Socket Cap
Per ANSI/ASME B18.3



Units: mm [in]
Unless otherwise specified:
.xx ± .25, x ± .5 (xxx
± .010, xx ± .02) Note: Each
piece has a tolerance of ± .010



Part Number Code	M	A	280HT	-	3.80	E	T4	L
Screw								
Metric Screw Head M2.5 Hex Drive								M
Standard Screw Head 3/32 Hex Drive								[Blank]
Finish								
Black Anodized								A
Or choose from Finish Table								
Length								
Length in 12.7 (.50) increments								96.52 [3.80]
								to 325.12 [12.80]
Mounting								
Additional Center Mounting Hole								E
None								[Blank]
Mounting Options - through mounting holes								T4
Or choose from Mounting Method Table								
Lock Patch								
Lock Patch								L
None								[Blank]

Part Number Code example: A280HT-4.80T4
Series 280HT Card-Lok five piece 121.9 (4.80) long with black anodize finish, 4-40 tapped hole for mounting.

FINISH TABLE

CODE LETTER	SURFACE FINISH
"A"	BLACK ANODIZE PER MIL-A-8625 TYPE II, CLASS 2
"HA"	HARD BLACK ANODIZE PER MIL-A-8625 TYPE III, CLASS 2
"EN"	ELECTROLESS NICKEL PER MIL-C-26074 CLASS 4, GRADE B, BRIGHT

MOUNTING METHOD TABLE

CODE LETTER	METHOD
"T4"	4-40 TAPPED HOLE
"TM3"	M3 x 0.50 TAPPED HOLE

