

Red neon glow

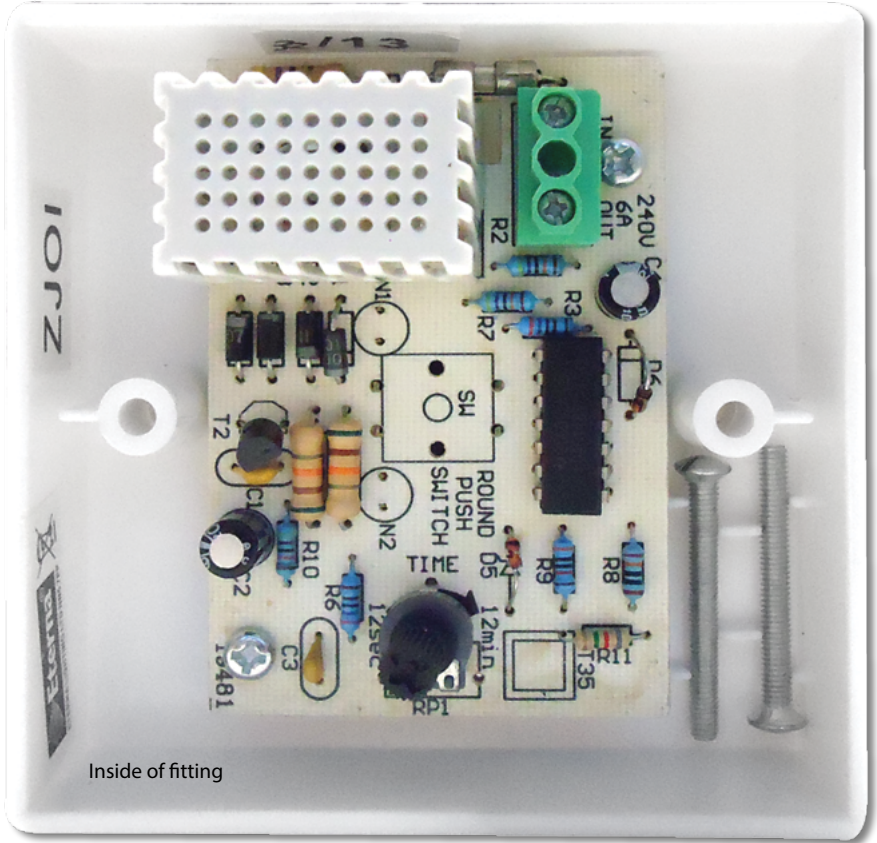


ELECTRONIC TIME DELAY PUSH SWITCH

- ABS construction
- Time on adjustable between 12 seconds and 12 minutes
- Red neon switch perimeter glow light: easy location of switching point
- No neutral connection required: can replace existing switch with no additional wiring
- Max load rating: 6 Amp incandescent 1440W
- Not Compatible With LED - See Eterna Product: **PUSHLED**

• M.O.M: 5 / O.P.Q: 40

| Code | Colour | Wattage | IP Rating |
|---------|--------|-----------|-----------|
| TLS1440 | White | 1440W Max | IP20 |



Inside of fitting