

# 375 TRI-WING® screwdriver for TRI-WING® screws, # 4 x 100 mm

Screwdrivers Kraftform Plus – Series 300



<b>EAN/GTIN:</b>	4013288037060	<b>Dimension:</b>	198x33x33 mm
<b>Part no.:</b>	05028124001	<b>Weight:</b>	77 g
<b>Article no.:</b>	375 TRI-WING®	<b>Country of origin:</b>	CZ
		<b>Customs tariff number:</b>	82054000

- Screwdriver for TRI-WING® screws
- Multi-component Kraftform handle for fast and ergonomic screwdriving
- Handle markings simplify finding and sorting of tools
- Hexagonal anti-roll feature against rolling away
- The Wera Black Point tip offers an exact fit and optimum corrosion protection

High quality Kraftform Plus screwdriver. Multi-component Kraftform handle for fast and low-fatigue working. Kraftform Plus: hard gripping zones for high working speeds whereas soft zones ensure high torque transfer. The Wera Black Point tip offers optimised corrosion protection and an exact fit. The hexagonal anti-roll feature prevents any bothersome rolling away at the workplace. Handle markings for simplified finding and sorting of the tool.

## Weblink

[http://products.wera.de/en/tools\\_for\\_the\\_aerospace\\_segment\\_screwdrivers\\_screwdrivers\\_kraftform\\_plus\\_series\\_300\\_375\\_tri-wing.html](http://products.wera.de/en/tools_for_the_aerospace_segment_screwdrivers_screwdrivers_kraftform_plus_series_300_375_tri-wing.html)

Wera - 375 TRI-WING®  
05028124001 - 4013288037060

Wera Werkzeuge GmbH  
Korzter Straße 21-25  
D-42349 Wuppertal  
Tel: +49 (0)2 02 / 40 45-0  
E-Mail: [info@wera.de](mailto:info@wera.de)

Screwdrivers Kraftform Plus – Series 300

The TRI-WING® screwdriving system



Kraftform Plus screwdrivers – ergonomics you can grasp. They relieve the entire hand-arm system even when used intensively. Along with other technical and product advantages such as the Lasertip for a secure fit in the screw head, Kraftform screwdrivers are the ideal choice whenever manual screwdriving jobs are concerned.

The TRI-WING® screwdriving system is mainly found in aviation and household technology (here e.g. on live components). The asymmetric arrangement of the three profile flanks prevents the use of anything other than the original tools. The high-precision Wera profile design ensures a secure fit of the tool in the head of the screw. The blades are manufactured out of bit material. The Wera know-how with regard to the hardening technology ensures a long service life of the tool.

Kraftform



The basic idea for the prototype of the Kraftform handle – that the hand should dictate the design – has, right through to today, proved to be correct. In cooperation with the internationally recognised Fraunhofer IAO Institute, Wera developed a screwdriver handle designed to match the shape of the human hand as long ago as the 1960s. After a long development phase, the Wera Kraftform handle was launched to the market in 1968. It has been optimised through the years with new technologies, but has kept its proven shape. After all, the human hand has not changed either.

Rapid hand repositioning



The hard materials used for the handle ensure rapid hand repositioning without any danger of the skin “sticking” to the handle. The surrounding hard zones with large diameters glide like wheels across the hand.

Large contact area



The large contact area – with particularly high friction to the soft zones – results in high torque transfer without any bruising from the edges.

Identification marking



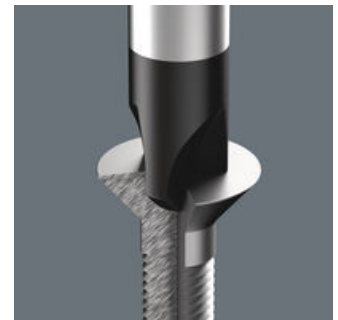
The screw symbol and tip size identification markings on the handle make it easier to find the right screwdriver in the tool case or at the workplace.

Non-roll feature



The hexagonal non-roll feature prevents any rolling away at the workplace.

Wera Black Point tip



The Wera Black Point tip and a refined hardening process ensure long service life of the tip, improved corrosion protection and an exact fit.






Weblink

[http://products.wera.de/en/tools\\_for\\_the\\_aerospace\\_segment\\_screwdrivers\\_screwdrivers\\_kraftform\\_plus\\_series\\_300\\_375\\_tri-wing.html](http://products.wera.de/en/tools_for_the_aerospace_segment_screwdrivers_screwdrivers_kraftform_plus_series_300_375_tri-wing.html)

Wera - 375 TRI-WING®  
05028124001 - 4013288037060

Wera Werkzeuge GmbH  
Korzter Straße 21-25  
D-42349 Wuppertal  
Tel: +49 (0)2 02 / 40 45-0  
E-Mail: info@wera.de

More variants of this product family:

		 mm	 mm	 mm	 inch
05028116001	0	80	81	3.5	3 1/8
05028118001	1	80	81	3.5	3 1/8
05028120001	2	80	98	4.5	3 1/8
05028122001	3	80	98	4.5	3 1/8
<b>05028124001</b>	<b>4</b>	<b>100</b>	<b>98</b>	<b>6.0</b>	<b>4</b>
05028126001	5	100	98	6.0	4

**Weblink**
[http://products.wera.de/en/tools\\_for\\_the\\_aerospace\\_segment\\_screwdrivers\\_screwdrivers\\_kraftform\\_plus\\_series\\_300\\_375\\_tri-wing.html](http://products.wera.de/en/tools_for_the_aerospace_segment_screwdrivers_screwdrivers_kraftform_plus_series_300_375_tri-wing.html)

 Wera - 375 TRI-WING®  
 05028124001 - 4013288037060

 Wera Werkzeuge GmbH  
 Korzter Straße 21-25  
 D-42349 Wuppertal  
 Tel: +49 (0)2 02 / 40 45-0  
 E-Mail: info@wera.de