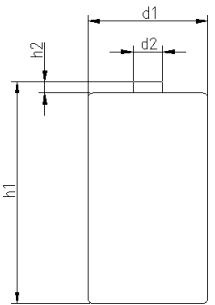


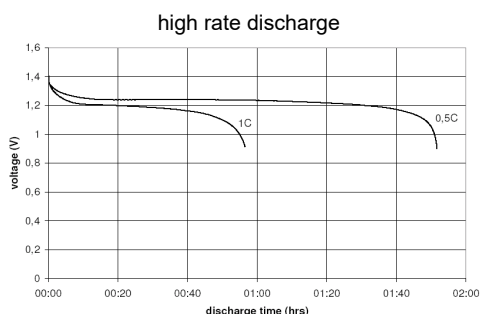
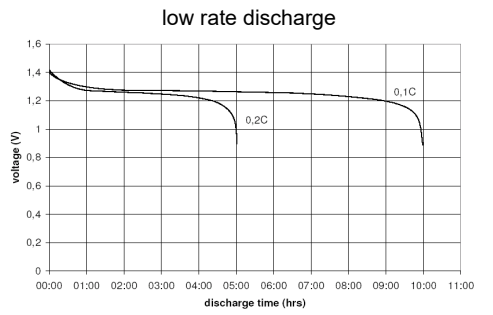
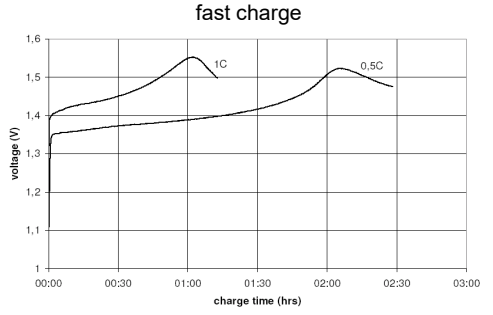
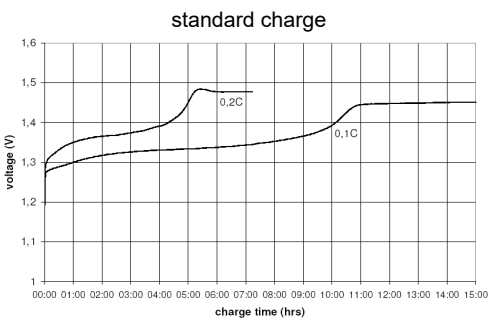
		Conditions	
cell type:	NiMH		
cell size:	C		
nominal voltage:	1.2 V	at standard charge (0.1C / 20°C)	
max. charge voltage:	1.5 V		
capacity			
nominal:	2500 mAh	discharge at 0.2C	
minimum:	2500 mAh 2250 mAh	discharge at 0.2C discharge at 1C	
		1.0V end discharge voltage ta: 20°C	
max. continuous discharge current:	5000 mA	ta: 0...45°C	
charge		current	time
standard charge:	250 mA	750 mA	14....16hrs
quick charge:	750 mA	2500 mA	4hrs
fast charge:	2500 mA		1.1hrs
recommended charge termination control parameters:	0...5 mV 0.8...1 °C 45...50 °C	- ΔV (-deltaV) temperature rise per minute TCO (temperature cut off)	
trickle charge current:	25...75 mA	(recommended)	
continuous overcharge: (less than 1 year)	≤ 250 mA	no conspicuous deformation no leakage	
internal resistance: (impedance)	≤ 30 mΩ	at 1KHz battery fully charged	
life expectance:	≥ 500 cycles	acc. IEC standard	
self discharge			
charge retention:	≥ 80 %	after 12 months storage at 20°C	
initial capacity:	≥ 1700 mAh	within 30 days after delivery discharge at 0.2C	
ambient temperature range:	0...45 °C 10...40 °C - 20...65 °C - 20...50 °C - 20...40 °C - 20...30 °C	standard charge fast charge discharge storage (≤3months) storage (≤6months) storage (≤24months)	

QCT1: 20/2350/30
QCT2: 30/2200/35

mechanical specifications			
cell dimensions			
diameter d1:		25.6 - 1.0	mm
diameter d2:	max.	7.5	mm
height h1:		50.0 - 2.0	mm
height h2:	min.	1.5	mm
weight:		60 ± 4	g



Diagrams



	ANSMANN Specifications for model:	C - 2500mAh low self discharge 2pcs blister package
	data sheet no. / part no.	5030912
	supplier no.	702069
	author / date	TG / 04.07.2018

Manufacturer reserves the right to alter or amend the design, model and specification without prior notice