

# Accessories for pluggable interface relays CR-P, CR-M

## Pluggable function modules

### Data sheet

2CDC 281 037 F0004



CR-P/M xx

#### Features

- Pluggable function modules for mounting on logical and standard sockets for interface relays CR-P and CR-M
- Function modules: Reverse polarity protection/free wheeling diode, LED indication, RC elements, overload protection

#### Approvals

CAN/CSA C22.2 No.14

GOST

(except CR-P/M 42B, CR-P/M 42BV, CR-P/M 42C, CR-P/M 42CV, CR-P/M 52D, CR-P/M 62E, CR-P/M 62EV, CR-P/M 62D, CR-P/M 62DV)

#### Marks

CE

#### Order data

Type	Rated control supply voltage	Version	Order code
Diode - Reverse polarity protection			
CR-P/M 22	6-230 V DC	A1+, A2-	1SVR 405 651 R0000
Diode and LED - Reverse polarity protection			
CR-P/M 42	6-24 V DC	red, A1+, A2-	1SVR 405 652 R0000
CR-P/M 42V	6-24 V DC	green, A1+, A2-	1SVR 405 652 R1000
CR-P/M 42B	24-60 V DC	red, A1+, A2-	1SVR 405 652 R4000
CR-P/M 42BV	24-60 V DC	green, A1+, A2-	1SVR 405 652 R4100
CR-P/M 42C	110-230 V DC	red, A1+, A2-	1SVR 405 652 R9000
CR-P/M 42CV	110-230 V DC	green, A1+, A2-	1SVR 405 652 R9100
RC element - Arc elimination			
CR-P/M 52B	6-24 V AC		1SVR 405 653 R0000
CR-P/M 52D	24-60 V AC		1SVR 405 653 R4000
CR-P/M 52C	110-230 V AC		1SVR 405 653 R1000
Diode and LED			
CR-P/M 62	6-24 V AC/DC	red, for DC: A1+, A2-	1SVR 405 654 R0000
CR-P/M 62V	6-24 V AC/DC	green, for DC: A1+, A2-	1SVR 405 654 R1000
CR-P/M 62E	24-60 V AC/DC	red, for DC: A1+, A2-	1SVR 405 654 R4000
CR-P/M 62EV	24-60 V AC/DC	green, for DC: A1+, A2-	1SVR 405 654 R4100
CR-P/M 92	110-230 V AC/DC	red, for DC: A1+, A2-	1SVR 405 654 R0100
CR-P/M 92V	110-230 V AC/DC	green, for DC: A1+, A2-	1SVR 405 654 R1100
Varistor and LED - Overvoltage protection			
CR-P/M 62C	6-24 V AC/DC	red, for DC: A1+, A2-	1SVR 405 655 R0000
CR-P/M 62CV	6-24 V AC/DC	green, for DC: A1+, A2-	1SVR 405 655 R1000
CR-P/M 62D	24-60 V AC/DC	red, for DC: A1+, A2-	1SVR 405 655 R4000
CR-P/M 62DV	24-60 V AC/DC	green, for DC: A1+, A2-	1SVR 405 655 R4100
CR-P/M 92C	110-230 V AC/DC	red, for DC: A1+, A2-	1SVR 405 655 R0100
CR-P/M 92CV	110-230 V AC/DC	green, for DC: A1+, A2-	1SVR 405 655 R1100
Varistor - Overvoltage protection			
CR-P/M 72	24 V AC		1SVR 405 656 R0000
CR-P/M 72A	115 V AC		1SVR 405 656 R1000
CR-P/M 82	230 V AC		1SVR 405 656 R2000

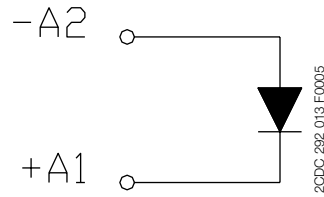
Packing unit = 10 pieces.

# Accessories for pluggable interface relays CR-P, CR-M

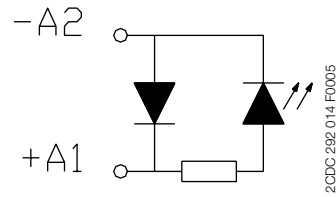
## Pluggable function modules

### Data sheet

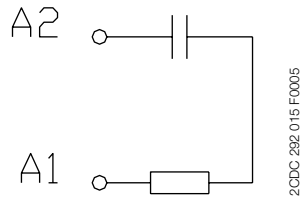
#### Connection diagrams



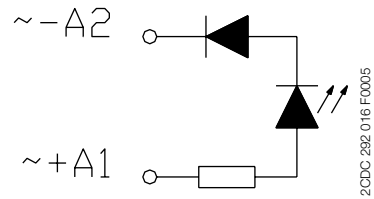
CR-P/M 22



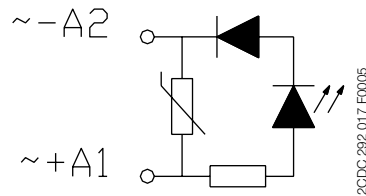
CR-P/M 42, CR-P/M 42B, CR-P/M 42C,  
CR-P/M 42V, CR-P/M 42BV, CR-P/M 42CV



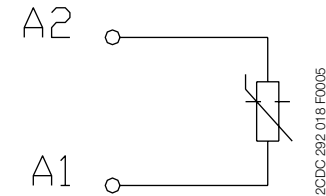
CR-P/M 52B, CR-P/M 52C,  
CR-P/M 52D,



CR-P/M 62, CR-P/M 62E, CR-P/M 92,  
CR-P/M 62V, CR-P/M 62EV, CR-P/M 92V



CR-P/M 62C, CR-P/M 62D, CR-P/M 92C,  
CR-P/M 62CV, CR-P/M 62DV, CR-P/M 92CV



CR-P/M 72, CR-P/M 82

#### Technical data

Type	CR-P/M	
	22	
Version	Diode	
Function	Reverse polarity protection	
Control supply voltage	6-230 V DC	
Component data	Diode	1 A, 1000 V
Polarized	yes (A1+, A2-)	
Material	Enclosure / Base	PA6 + GF V2

Type	CR-P/M							
	42	42V	42B	42BV	42C	42CV		
Version	Diode and LED							
Function	Reverse polarity protection, applied supply voltage indicated via LED							
Control supply voltage	6-24 V DC		24-60 V DC		110-230 V DC			
Component data	Diode		1 A, 1000 V					
	LED		red	green	red	green	red	green
	Resistance		3.3 kΩ, 0.25 W		12 kΩ, 1 W		47 kΩ, 1 W	
Polarized	yes (A1+, A2-)							
Material	Enclosure / Base		PA6 + GF V2					

# Accessories for pluggable interface relays CR-P, CR-M

## Pluggable function modules

### Data sheet

Type	CR-P/M			
	52B	52D	52C	
Version	RC element			
Function	Arc elimination			
Control supply voltage	6-24 V AC	24-60 V AC	110-230 V AC	
Component data	Capacitor	0.22 $\mu$ F, 100 V DC	0.22 $\mu$ F, 160 V DC	0.01 $\mu$ F, 630 V DC
	Resistance	0.22 k $\Omega$ , 1 W	0.47 k $\Omega$ , 0.4 W	4.7 k $\Omega$ , 0.4 W
Polarized	no			
Material	Enclosure / Base PA6 + GF V2			

Type	CR-P/M											
	62	62V	62E	62EV	92	92V						
Version	Diode and LED											
Function												
Control supply voltage	6-24 V AC/DC		24-60 V AC/DC		110-230 V AC/DC							
Component data	Diode						1 A, 1000 V					
	LED		red	green	red	green	red	green				
	Resistance		3.3 k $\Omega$ , 1 W		12 k $\Omega$ , 1 W		47 k $\Omega$ , 1 W					
Polarized	AC: no, DC: yes (A1+, A2-)											
Material	Enclosure / Base PA6 + GF V2											

Type	CR-P/M											
	62C	62CV	62D	62DV	92C	92CV						
Version	Varistor and LED											
Function												
Control supply voltage	6-24 V AC/DC		24-60 V AC/DC		110-230 V AC/DC							
Component data	Diode						1 A, 1000 V					
	LED		red	green	red	green	red	green				
	Varistor		25 V AC		75 V AC		275 V AC					
	Resistance		3.3 k $\Omega$ , 0.25 W		12 k $\Omega$ , 1 W		47 k $\Omega$ , 1 W					
Polarized	AC: no, DC: yes (A1+, A2-)											
Material	Enclosure / Base PA6 + GF V2											

Type	CR-P/M					
	72	72A	82			
Version	Varistor					
Function						
Control supply voltage	24 V AC	115 V AC	230 V AC			
Component data	Varistor			25 V AC	115 V AC	275 V AC
Polarized	no					
Material	Enclosure / Base PA6 + GF V2					

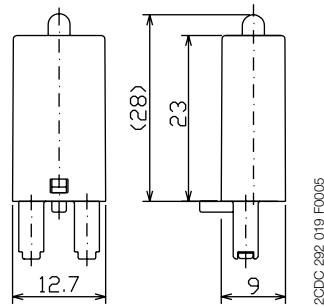
# Accessories for pluggable interface relays CR-P, CR-M

## Pluggable function modules

### Data sheet

#### Dimensions

in mm



#### Further documentation

Document title	Document type	Document number
Sockets CR-P	Data sheet	2CDC 117 004 D0203
Relays CR-P	Data sheet	2CDC 117 001 D0203
Sockets CR-M	Data sheet	2CDC 117 005 D0203
Relays CR-M	Data sheet	2CDC 117 002 D0203



As part of the on-going product improvement, ABB reserves the right to modify the characteristics of the products described in this document. The information given is non-contractual.

For further details please contact ([www.abb.com/contacts](http://www.abb.com/contacts)) the ABB company marketing these products in your country.

Document number: 2CDC 117 007 D0204 (02/2008)

#### ABB STOTZ-KONTAKT GmbH

Eppelheimer Strasse 82, 69123 Heidelberg, Germany  
Postfach 10 16 80, 69006 Heidelberg, Germany  
Internet <http://www.abb.com/lowvoltage> → Control Products

Contact: <http://www.abb.com/contacts> → Low Voltage Products and Systems