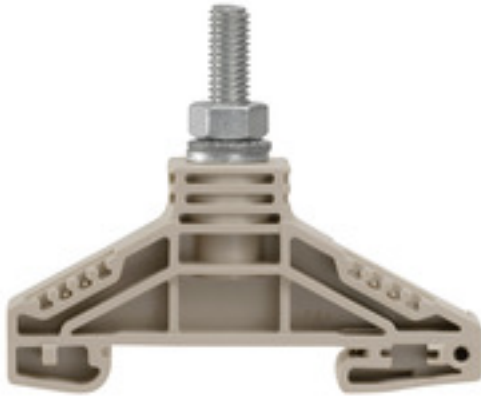


**Bolt-type screw terminals
WF 6**

Weidmüller Interface GmbH & Co. KG
 Klingenbergstraße 16
 D-32758 Detmold
 Germany
 Fon: +49 5231 14-0
 Fax: +49 5231 14-292083
 www.weidmueller.com



Klippon® Connect with stud Technology

Our stud terminals are an established, robust connection alternative for particularly harsh environments. The extensive accessories and quality workmanship ensure high productivity in planning and installation – and sustainable safety in operation..

General ordering data

Type	WF 6
Order No.	1780850000
Version	Bolt-type screw terminals, Feed-through terminal, Rated cross-section: 35 mm ² , Threaded stud connection
GTIN (EAN)	4032248219339
Qty.	25 pc(s).

Bolt-type screw terminals WF 6

Weidmüller Interface GmbH & Co. KG
Klingenbergstraße 16
D-32758 Detmold
Germany
Fon: +49 5231 14-0
Fax: +49 5231 14-292083
www.weidmueller.com

Technical data

Dimensions and weights

Width	17.8 mm	Width (inches)	0.701 inch
Height	67 mm	Height (inches)	2.638 inch
Depth	54.5 mm	Depth (inches)	2.146 inch
Net weight	26.494 g		

Temperatures

Continuous operating temp., min.	-50 °C	Continuous operating temp., max.	120 °C
----------------------------------	--------	----------------------------------	--------

Material data

Material	Wemid	Colour	Dark Beige
UL 94 flammability rating	V-0		

System specifications

Version	Single-stud terminals	Tightening torque (clamping screw for copper conductors)	3...6 Nm
End cover plate required	No	Number of levels	1
No. of clamping points per level	1	Levels cross-connected internally	No
PE connection	No	Mounting rail	TS 35

Additional technical data

Explosion-tested version	No	Number of similar terminals	1
Open sides	Open	Type of mounting	Snap-on

CSA rating data

Certificate No. (CSA)	200039-1244019	Current size C (CSA)	150 A
Voltage size C (CSA)	1000 V	Wire cross section max. (CSA)	2 AWG
Wire cross section min. (CSA)	14 AWG		

Conductors for clamping (rated connection)

2 x cable lugs DIN 46 234	2.5...35 mm ²	2 x cable lugs DIN 46 235	6...25 mm ²
Cable lug to DIN 46234	2.5...35 mm ²	Cable lug to DIN 46235	6...25 mm ²
Clamping range, max.	35 mm ²	Clamping range, min.	2.5 mm ²
Number of connections	1	Stud size for spade connection	M 6
Tightening torque, max.	6 Nm	Tightening torque, min.	3 Nm
Type of connection	Threaded stud connection		

Rating data

Rated cross-section	35 mm ²	Rated voltage	1,000 V
Voltage with epoxy resin partition plate	2,300 V	Rated current	125 A
Current at maximum wires	125 A	Volume resistance according to IEC 60947-7-x	0.26 mΩ
Rated impulse withstand voltage	8 kV	Impulse voltage with epoxy resin partition plate	12 kV
Pollution severity	3		

**Bolt-type screw terminals
WF 6**

Weidmüller Interface GmbH & Co. KG
 Klingenbergstraße 16
 D-32758 Detmold
 Germany
 Fon: +49 5231 14-0
 Fax: +49 5231 14-292083
 www.weidmueller.com

Technical data
Stud connection

2 x cable lugs DIN 46 234	2.5...35 mm ²	2 x cable lugs DIN 46 235	6...25 mm ²
Cable lug to DIN 46234	2.5...35 mm ²	Cable lug to DIN 46235	6...25 mm ²
Impulse voltage with epoxy resin partition plate	12 kV	Stud size for spade connection	M 6
Tightening torque, max.	6 Nm	Tightening torque, min.	3 Nm
Voltage with epoxy resin partition plate	2,300 V		

UL rating data

Certificate No. (UR)	E60693	Certificate No. (cURus)	E60693
Conductor size Factory wiring max. (UR)	2 AWG	Conductor size Factory wiring min. (UR)	14 AWG
Conductor size Field wiring max. (UR)	2 AWG	Conductor size Field wiring min. (UR)	14 AWG
Current size C (UR)	115 A	Voltage size C (UR)	1000 V

Classifications

ETIM 3.0	EC002020	ETIM 4.0	EC000897
ETIM 5.0	EC000897	ETIM 6.0	EC000897
UNSPSC	30-21-18-01	eClass 6.2	27-14-11-20
eClass 7.1	27-14-11-20	eClass 8.1	27-14-11-20
eClass 9.0	27-14-11-20	eClass 9.1	27-14-11-20

Product information

Descriptive text ordering data	1000 VDC rated voltage tested.
Descriptive text technical data	1000 V UL and CSA for usage groups B and C: can be used with isolating terminal rails and when using WTW-type partitions.
Descriptive text accessories	With WTW...2300 made from epoxy resin, rated current is 2300 V according to DIN EN 50124-1

Approvals

Approvals



ROHS Conform

Downloads

Approval/Certificate/Document of Conformity	DE_PT1004_20160418_848_ISSUE01.pdf
Brochure/Catalogue	CAT 1 TERM 16/17 EN
Engineering Data	EPLAN, WSCAD

Safety note

 Safety notice [Safety Information](#)

Data sheet

**Bolt-type screw terminals
WF 6**

Weidmüller Interface GmbH & Co. KG
Klingenbergstraße 16
D-32758 Detmold
Germany
Fon: +49 5231 14-0
Fax: +49 5231 14-292083
www.weidmueller.com

Drawings

