

[Weller Technology Line]

GENERATION WT

The next level of hand soldering and hot air rework.



Weller[®]

WT series

[WellerTechnology Line]

Weller just got user-friendlier.



Table of Contents

WT Stations introduction	2–3	Overview WT Stations and sets	12–13
Technical data	3	Soldering tool sets	14–15
WT1 / WT1H Soldering stations	4–5	Safety rests and accessories	16
WTP90 Soldering pencil	6	Soldering tips (THM and XNT)	18–19
WSR Safety rest	7	Accessories	20–21
WTHA1 Hot air station	8–9	Expanding your Weller workbench	22–23
WT Tool selection and compatibility matrix	10–11	Contact information	24

Technical Data	WT1	WT1H	WTHA1
Dimensions L x W x H	150 x 130 x 101 mm 5.91 x 5.12 x 3.98 in		210 x 160 x 125 mm 8.30 x 6.30 x 4.90 in
Fuse 120 V (A)	T1	T1.6	T8 A
Weight	2.7 kg / 6.0 lbs	3.8 kg / 8.4 lbs	3.0 kg / 6.6 lbs
Power supply	120 V / 60 Hz		
Power	90 W (95 W)	150 W	900 W
ESD safe	Yes	Yes	Yes
Temperature range (Tool dependent)	50 °C – 450 °C / 550 °C 150 °F – 850 °F / 950 °F		50 °C – 600 °C 120 °F – 1100 °F
Air flow (expanded hot air)	N/A		l / min 5 – 100
Temperature accuracy	± 9 °C / ± 17 °F		± 30 °C / ± 54 °F

New stations, new safety rest, new pencil, new tips!

We've packed tons of user-friendly features into the new WT soldering and hot air stations, so our R&D team had to design a compatible **new soldering tool with new high-mass tips** that can take on the challenges of applications with large thermal mass.

And no worries! The WT series stations and pencil are **backwards compatible** with many existing tips and accessories.

[90 W] [150 W]
WT1 AND WT1H

The can-do soldering stations.

These next generation, single channel soldering stations aim to please. Conserve valuable workspace with our new, user-friendly, stackable soldering units. The detailed LCD screen enables an unprecedented overview of all functions, quick and easy to reach via the new user-friendly menu button.

If you need even more performance than 90 W, then the smart solution is the higher-powered WT1H, at 150 W.



Announcing the NEW high-performance WTP90 soldering pencil, complimented by its new high-mass THM tips.



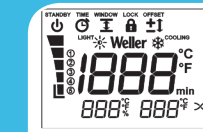
Product picture similar

ADVANTAGES AT A GLANCE



Front Panel Power Switch

The front-mounted power switch ensures easy access at all times.



Multi-functional LCD Screen

Unique LCD screen with a detailed overview of all functions. Adjustable background illumination. Power bar graph allows visual monitoring of the easily-readable output power from the station to the soldering pencil tip.



New Menu Button

Provides simple, user-friendly access and navigation of the menu features.



New Soldering Pencil

The new, high-performance WTP90 soldering pencil features a system to quickly and easily switch out the heating element or the tip while the iron is hot.



2-in-1 WSR Safety Rest

The unique, reversable WSR safety rest flips between sponge and brass wool.



Stackable Units

The WT soldering stations can be stacked on the WTHA1 hot air station, or on each other, saving space on the workbench.



High Performance

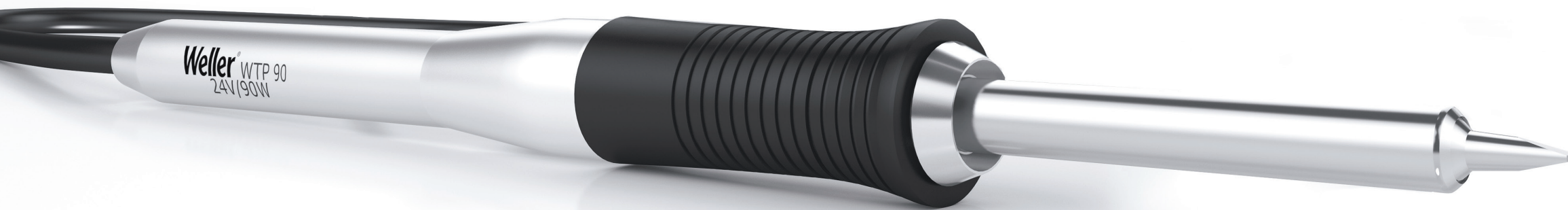
The WT soldering stations are available in two designs: 90 W and 150 W power units.



Backwards Compatible

A large selection of existing Weller pencils are compatible with the Weller WT soldering systems; see pages 10–11 for compatibility chart.

WT series product highlights...



Product picture similar

The WTP90 soldering pencil

- > Quick tip / heater change design
- > Integral accelerometer in the handle detects use and signals the activation of the Standby and Auto Off modes when the tool is resting
- > The new THM series high thermal mass soldering tips offer more efficient heat transfer in high mass soldering applications
- > Uses standard XNT tip family and is compatible with optional new THM series tips



Your workspace has never been more versatile, functional AND orderly.

- > The WT1 soldering and WT1H soldering stations can be stacked on the WTHA1 hot air station, or on each other, saving space on the workbench.
- > Includes flat, heat-resistant silicon pad to place tips and other items

A unique safety rest that flips between sponge AND brass wool.



ADVANTAGES AT A GLANCE



Quick Change System

- > Passive tip system allows quick exchange of heating elements when iron is heated (port/channel must be turned "Off")
- > Can easily switch out tips
- > Tip replacement can be performed independent of the heating element



2-in-1 WSR Safety Rest

- > Reversible soldering pencil holder
- > Optional choice of wet or dry tip cleaning



Safety Rests Connect Together

- > Removable side plates allow the WSR Weller Safety Rests (WSR) to be joined at the base to create a stable, multiple tool stand configuration, conserving valuable workspace.

[900W]
WTHA1

More than just a lot of hot air.

900 W power, compact, easy-operating station with a smart temperature profile mode adjustable for diverse rework applications, assuring fast, safe performance. Up to 100 l / min expanded hot air.



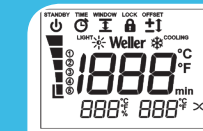
Product picture similar

ADVANTAGES AT A GLANCE



Front Panel Power Switch

The front-mounted power switch ensures easy access at all times.



Multi-function LCD Screen

LCD screen offers a detailed overview of all functions. Adjustable background illumination. Power bar graph allows visual monitoring of the output power from the station to the hot air tool.



Quick Access Menu Button

Provides simple, user-friendly access and navigation of the menu features.



Stackable Units

The WT1 / WT1H soldering stations can be stacked on the WTHA1 hot air station, saving space on the workbench.

5 Pre-sets / Temperature Profile

Up to 5 pre-sets are available to define volume, temperature and time settings. With the profile mode activated, the pre-sets can be operated in a selected sequential order.



New Control System

Tandem control with a dual sensor system for optimum performance.



Hot air activation button

Finger-activated switch conveniently located on the ergonomic hand grip.



Flexible Silicone Hose

90 cm long, flexible, heat-resistant silicone hose.

TECHNOLOGY LINE TOOL SELECTION AND COMPATIBILITY MATRIX



90 W
WT1 Soldering Station

150W
WT1H Soldering Station

Power Response Silver Line

WTP90 | 90 W SOLDERING PENCIL

The high-tech pencil for universal use with power response tips. Order no.T0052922299N



WP65 | 65 W SOLDERING PENCIL

Suitable for fine soldering applications. Order no.T0052921599N



WP80 | 80 W SOLDERING PENCIL

Soldering pencil for standard applications with short tip-to-grip design. Order no.T0052918099N



WSP80 | 80 W SOLDERING PENCIL

For standard soldering applications. Order no.WSP80N



WP120 | 120 W SOLDERING PENCIL

Versatile 120 W pencil for demanding applications. Suitable for use on small and large applications with a higher heat demand. Order no.T0052919399N



WSP150 | 150 W SOLDERING PENCIL

For applications with extremely high heat requirements and large heat sinks. Order no.T0052917099N



WP200 | 200 W SOLDERING PENCIL

High power soldering pencil. Ideal for those applications with the highest heat demands. Order no.T0052919999N



WTA50 | 2 x 25 W DESOLDERING TWEEZERS

2 x 25 W, for safe desoldering jobs. Order no.T0051317199N



FE75 | 75 W SOLDERING PENCIL

Integrated fume extraction pencil. Order no.T0052916699N



WHP80 | 80 W HEATING PLATE

Heating plate with heating surface 80 x 50 mm, temperature range 50 °C – 200 °C (150 °F – 400 °F). Order no.T0052702899N



WSB80 | 80 W SOLDER BATH

Solder bath for lead-free solder, 80 W, inside diameter 20 mm, depth 25 mm, temperature range 50 °C – 450 °C (150 °F – 850 °F). Order no.T0052704099N



WSB150 | 150 W SOLDER BATH

Solder bath, 150 W, 50 °C – 550 °C (150 °F – 999 °F), for lead-free solder. Order no.T0052704299N





WT1 Soldering station

120 V, 90 W Power unit

Order no.
WT1N



WT1H Soldering station

120 V, 150 W Power unit

Order no.
WT1HN



WTHA1 Hot air station

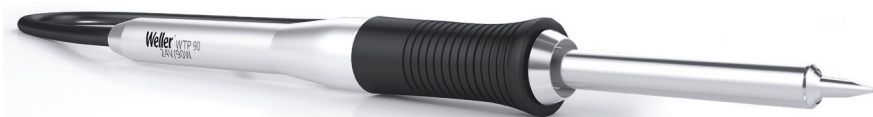
120 V, 900 W Hot air station with integrated hot air pencil

Order no.
WTHA1N

WTP90 Soldering pencil

90 W Soldering pencil. With XNT tip. For high performance, order THM high mass tips

THM, XNT
Order no.
T0052922299N



WT1010 Set

WT1 power unit with WTP90 soldering pencil (90 W / 24 V), soldering tip XNT and WSR200 safety rest

THM, XNT
Order no.
WT1010N



WT1011 Set

WT1 power unit with WP65 soldering pencil (65 W / 24 V), soldering tip XNT A and WSR201 safety rest

XNT
Order no.
WT1011N



WT1012 Set

WT1 power unit with WSP80 soldering pencil (80 W / 24 V), soldering tip LT B and WSR201 safety rest

LT
Order no.
WT1012N



WT1013 Set

WT1 power unit with WP80 soldering pencil (80 W / 24 V), soldering tip LT B and WSR201 safety rest

LT
Order no.
WT1013N



WT1010H Set

WT1H power unit with WP120 soldering pencil (120 W / 24 V), soldering tip XT B and WSR201 safety rest

XT
Order no.
WT1010HN



WT1011H Set

WT1H power unit with WP200 soldering pencil (*200 W / 24 V), soldering tip XHT D and WSR202 safety rest

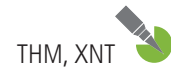
XHT
Order no.
WT1011HN

* Maximum power limited to 150 Watts.



WTP90 soldering pencil set with XNT tip and WSR200 safety rest

The high-tech pencil for universal use with power response tips.
90W | 24V | Max. temperature 450 °C / 850 °F
Tip family XNT & THM (high thermal mass tips)



Order no.
T0052922399N



WSP150 soldering pencil set with LHT F tip and WDH30 safety rest

For applications with extremely high heat requirements and large heat sinks.
150 W | 24 V | Max. temperature 450 °C / 850 °F
Tip family LHT



Order no.
T0052918999N



WP65 soldering pencil set with XNT A tip and WDH10 safety rest

Suitable for fine soldering jobs applications.
65 W | 24 V | Max. temperature 450 °C / 850 °F
Tip family XNT



Order no.
T0052921699N



WP200 soldering pencil set with XHT D tip and WDH31 safety rest

High power soldering pencil. Ideal for those applications with the highest heat demands e.g. LED backpanels or HF shieldings.
*200 W | 24 V | Max. temperature 450 °C / 850 °F
Tip family XHT



Order no.
T0052920099N

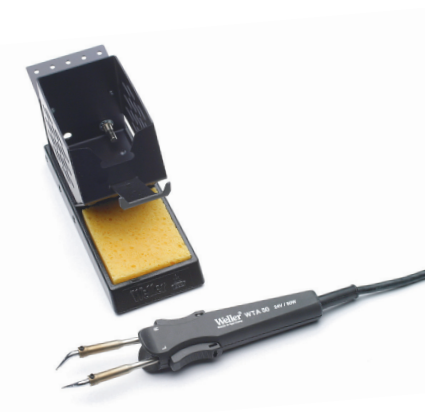


WP80 soldering pencil set with LT B tip and WDH10 safety rest

Soldering pencil for all standard applications with short tip-to-grip design. Comfortable safety rest with 4-step varying inclination.
80 W | 24V | Max. temperature 450 °C / 850 °F
Tip family LT



Order no.
T0052918199N

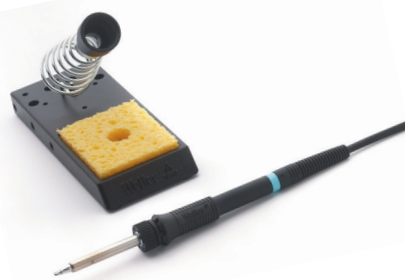


WTA50 desoldering tweezers set with WTA1 tip and AK51 safety rest

For safe desoldering jobs.
2 x 25 W | 24 V | Max. temperature 450 °C / 850 °F



Order no.
T0053313399N



WSP80 soldering pencil set with LT B tip and KH18 safety rest

For all standard soldering applications.
80 W | 24 V | Max. temperature 450 °C / 850 °F
Tip family LT



Order no.
T0053312599N



WP120 soldering pencil set with XT B tip and WDH10 safety rest

Versatile 120 W pencil for demanding applications. Suitable for use on small and large applications with a higher heat demand.
120 W | 24 V | Max. temperature 450 °C / 850 °F
Tip family XT



Order no.
T0052919499N



FE75 integrated fume extraction iron set with LT B tip and safety rest

Fume extraction soldering pencil. Two-in-one soldering and tip extraction. Includes a 5 mm brush.
80 W | 24 V | Max. temperature 450 °C / 850 °F
Tip family LT



Order no.
T0053315199N

Safety Rests



WSR200 Safety Rest

for WTP90
Order no. T0051517499N



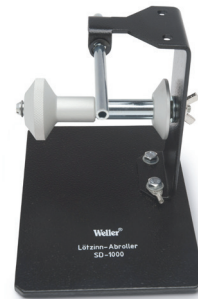
WSR202 Safety Rest

for WSP150 / WP200
Order no. T0051517699N



WSR201 Safety Rest

WSP80 / WP65 / WP80 / WP120
Order no. T0051517599N



SD1000 Solder Spool Dispenser

Holds 1 pound solder spool
(solder not included)
Order no. T0051301799N

ABW2 extension for additional reel
Order no. T0051301399N

Accessories

WSRF200 Funnel Replacement

for WSR200 / WDH51
Order no. T0058768727N

WSRF201 Funnel Replacement

for WSR201
Order no. T0058768728N

WSRF202 Funnel Replacement

for WSR202 / WDH31
Order no. T0058768729N

Barrel / Tip Retainer for WTP90

Order no. T0058768724N

Replacement heating element

for WTP90
Order no. T0058768725N



WSRH1 LT Tip Mounting and Storage Plate

Order no. T0058768732N



WSRH2 XNT Tip Mounting and Storage Plate

Order no. T0058768731N



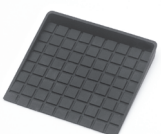
WSRH3 XHT Tip Mounting and Storage Plate

Order no. T0058768733N



Silicon Pad Replacement

for WT1 / WT1H
Order no. T0058768734N



Weller®



Need tips?

Only Weller supplies three different heating and tip technologies to ensure customers always have the absolute best tool for their specific application. Weller's proven technology enables users to finally tackle those difficult or near impossible hand soldering applications.

WT Tips

Power Response



Non-cartridge tips for small to high thermal mass applications

Silver Line

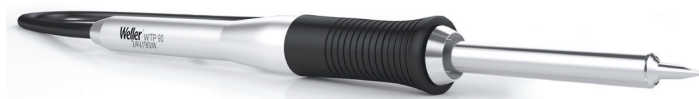


Low thermal mass tips for universal SMD and THT applications

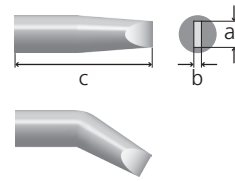


To shop our full line of tips,
please visit our website at
weller-toolsus.com

Soldering tips for the WTP90 soldering pencil



Chisel

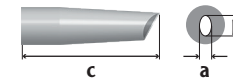


THM	Ø a mm	c mm	Order number
THM A	1.6	0.4	T0054490499N
THM B	2.4	0.8	T0054490599N
THM C	3.2	0.8	T0054490699N
THM D	4.0	0.8	T0054490799N

Introducing the new THM family, high mass tips for high performance applications.

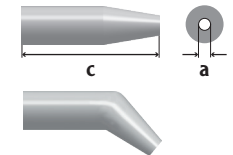
The standard XNT tip family is also compatible.

Gull wing



XNT	b mm	c mm	Order no.
XNT GW 1	2.0	33.0	T0054485499
XNT GW 2	1.5	27.5	T0054488099

Conical



XNT	Ø a mm	c mm	Order no.
XNT 1S	0.2	28.5	T0054485299
XNT 1LX	0.2	36.5	T0054487299

Type	Ø a mm	c mm	Order no.
XNT 1X	0.4	28.0	T0054486599
XNT 1SLX 45°	0.4	39.5	T0054487599

SMT*

XNT	Ø a mm	b mm	c mm	Order no.
XNT SMT 01*	10.4	0.6	7.1	T0054487699N
XNT SMT 02*	16.8	0.6	7.1	T0054487799N

Type	Ø a mm	b mm	c mm	Order no.
XNT SMT 03*	20.8	0.6	7.1	T0054487899N

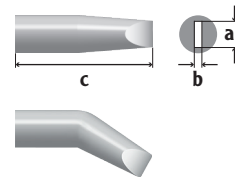
* SMT Blade tips for WP65 only.

Accessories

XNT	Ø a mm	c mm	Order no.
Measuring tip			K1131
XNT Screw M4		26.0	T0054487999

Type	Order no.
Barrel	T0058765758
Barrel for WP65 bent tips	T0058765767

Chisel



XNT	Ø a mm	b mm	c mm	Order no.
XNT 1SCNW*	0.3	0.1	27.0	T0054488199
XNT 1SC	0.4	0.15	27.0	T0054486299
XNT H	0.8	0.4	28.0	T0054485999
XNT K	1.2	0.4	28.0	T0054486099
XNT A	1.6	0.4	28.0	T0054485199
XNT 6	1.6	0.4	29.5	T0054485699
XNT B	2.4	0.8	27.0	T0054485799

Type	Ø a mm	b mm	c mm	Order no.
XNT C	3.2	0.8	27.0	T0054485899
XNT D	4.0	0.8	28.0	T0054485399
XNT HX 45°	0.8	0.4	36.5	T0054487399
XNT 4X 45°	1.2	0.4	34.6	T0054487499
XNT AX	1.6	0.8	28.0	T0054486499
XNT BX	2.4	0.8	36.5	T0054488299
XNT MX	3.2	0.8	37.5	T0054488399

Sloped



XNT	a mm	Order no.
XNT 4	1.2	T0054485599
XNT AA 45°	1.6	T0054488499
XNT BB 45°	2.4	T0054488599

Type	a mm	Order no.
XNT CC 45°	3.2	T0054488699
XNT F 45°	1.2	T0054488799

Conical

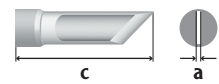


XNT	Ø a mm	c mm	Order no.
XNT 1	0.5	27.0	T0054485099

Type	Ø a mm	c mm	Order no.
XNT S	0.4	37.5	T0054486899

* Non-wettable

Knife



XNT	Ø a mm	c mm	Order no.
XNT KN	2.0	33.0	T0054486399



The TNA nozzle adapter also makes this tool backwards compatible with the Weller WHA series nozzles.

NEW Nozzles for the WTHA1 hot air pencil

Round

Type	Ø a mm	c mm	Order no.
TNR 25	2.5		T0058768742N
TNR 40	4.0		T0058768743N
TNR 70	7.0		T0058768744N
TNRB 17 X 45°	1.7		T0058768745N

Type	Ø a mm	c mm	Order no.
TNRB 60 X 45°	6.0		T0058768746N
TNA NOZZLE ADAPTER			T0058768747N
SILICON PAD			T0058768762N

WT connectible fume extraction units*



Zero Smog® EL

Portable fume extraction unit, easy to install and operate. Small, economical system for 2 workplaces.

Order no.
ZEROSMOGELN



Zero Smog® TL

Portable fume extraction unit, easy to install and operate. Small, economical system for 2 workplaces.

Order no.
ZEROSMOGTLN



Zero Smog® 4V

Mobile fume extraction unit for large areas, with built-in turbine and pressure regulator for constant volume flow. Up to 4 work places.

Order no.
T0053660299N



Zero Smog® 6V

Mobile fume extraction for large areas, with a built-in turbine. Up to 6 work places.

Order no.
T0053666299N

WT hub connector for Zero Smog® units



WT Hub

To connect the Zero Smog® EL and TL units to one or two WT stations

Order no.
T0058768767N

WT compatible heating plates

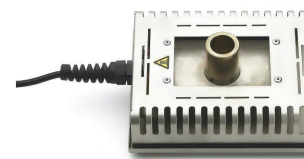


WHP80

Heating plate with heating surface 80 x 50 mm, temperature range 50 °C – 200 °C (150 °F – 400 °F)

Order no.
T0052702899N

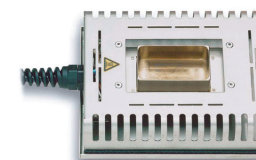
WT compatible soldering baths



WSB80

Solder bath for lead-free solder, 80 W, inside diameter 20 mm, depth 25 mm, temperature range 50 °C – 450 °C (150 °F – 850 °F)

Order no.
T0052704099N



WSB150

Solder bath for lead-free solder, 150 W, temperature range 50 °C – 550 °C (150 °F – 999 °F)

Order no.
T0052704299N

* For more information and to view our entire line of fume extraction equipment, please order our Weller FT fume extraction brochure (T550943), also available online in our Literature section.

How do I expand my Weller® workbench?



Solder spool dispenser:

- Minimizes core solder usage
- Eliminates operator downtime by providing continuous solder wire
- Holds 1 pound solder spool (solder not included)

Erem® precision cutters, pliers and tweezers are an indispensable component to any Weller configuration.

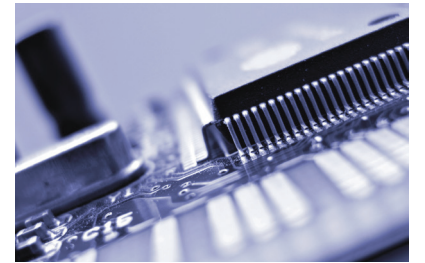
Zero Smog® fume extraction units protect your health and the health of your employees.

How do I select my Weller® soldering system?

1 Choose your solder tip based on component type and size.



2 Choose the energy level required for soldering.



3 Choose your soldering tool.



4 Choose the soldering station compatible with your soldering tool.

5 Request a free demo at your facility! Visit weller-toolsus.com for more information.



We're here to help!

1- (866) 498-0484
weller-na@weller-tools.com
weller-toolsus.com

Weller[®]