



Inspired Wireless M2M Technology



## LC300 Series

linkCONNECT Starter Kit

## Quick Start Guide

Rev 1.2

---

## Whats in the Box?

As standard, the LC300 starter kit comes with the following\*:

- » LC300-XXXX modem
- » Power supply
- » Mike 1A antenna
- » RS232 to USB cable
- » Quick start guide

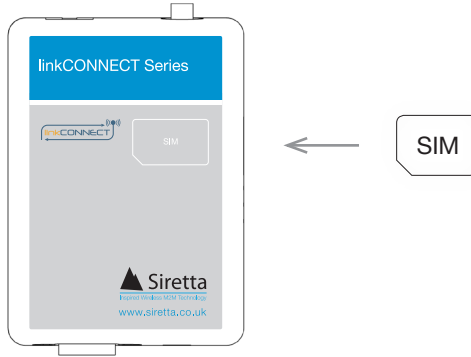
**NOTE** - The LC300 modem requires a SIM card to work. If you do not have a SIM card, these can be purchased through Siretta. For more information please contact your Siretta representative or call us on +44 (0)118 976 9014.

\*If you have purchased the LC300 as a standalone modem, you will need to purchase the other accessories separately from [www.siretta.co.uk](http://www.siretta.co.uk)

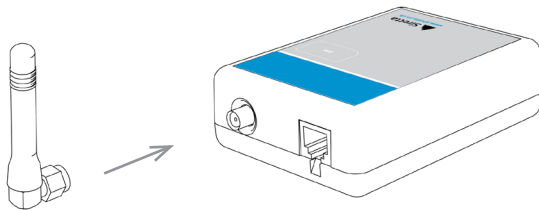
---

## Setting up the LC300

**Step 1.** Insert a SIM card fully into the SIM slot. Once the SIM card has been correctly inserted, a click will be heard.

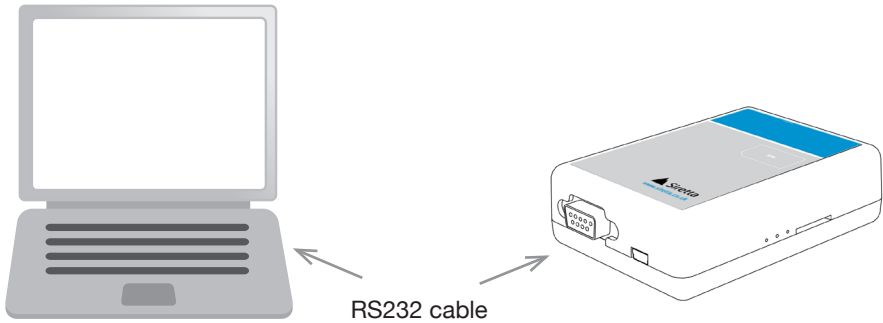


**Step 2.** Screw the antenna onto the LC300. Twist the antenna connector clock-wise until the antenna is firmly connected.\*

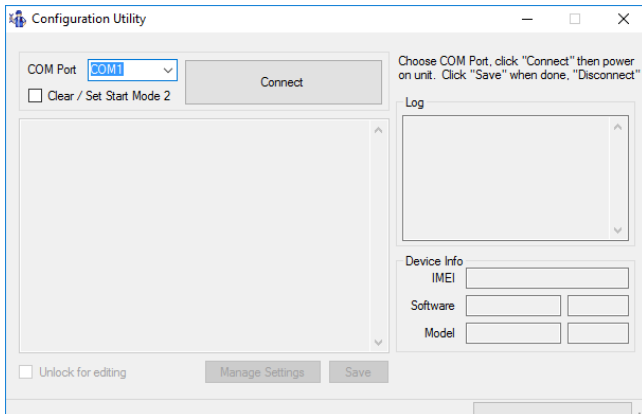


\*The antenna used in this drawing is different to the one supplied, however the application process of the antenna is the same.

**Step 3.** Using the supplied RS232 cable, connect the RS232 connector into the RS232 port on the LC300. Connect the USB connector (other end of the cable) into a USB port on your PC.

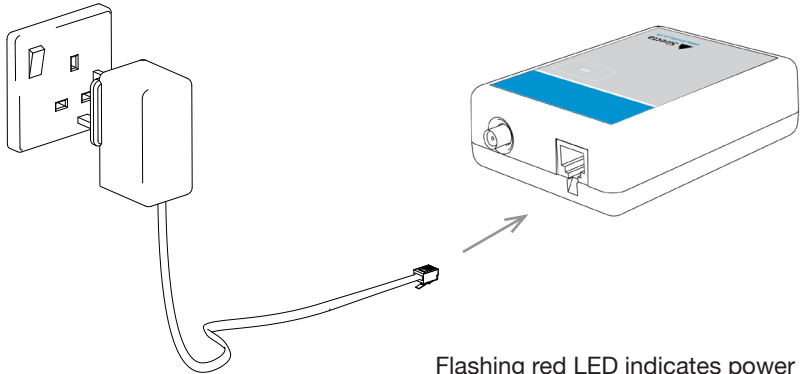


**Step 4.** Download the configuration tool using the following link.\*  
[http://www.siretta.co.uk/downloads/config\\_utility.exe](http://www.siretta.co.uk/downloads/config_utility.exe)

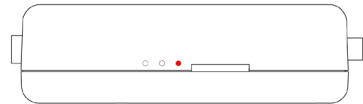


\*For more information please see the linkCONNECT Software Manual

**Step 5.** Plug the power supply into the LC300. Ensure the mains supply is plugged into a power source and switched on. The red LED on the LC300 will start flashing\*, this indicates that power has been supplied. See **table 1** for LC300-GPRS LED indication and **table 2** for LC300-UMTS LED indication.



Flashing red LED indicates power on



**Table 1.** LC300-GPRS LED indication

LED colour	State
Red (STAT_LED)	Flash rate once per second: Network search / not registered / turning off
	Slow rate once every 3 seconds: Registered full service
	Constant ON: Ringing OR call in progress
	OFF: Module power down
Green (GPIO 1)	Reserved / Special Function / Test
Blue (GPIO 2)	Reserved / Special Function / Test

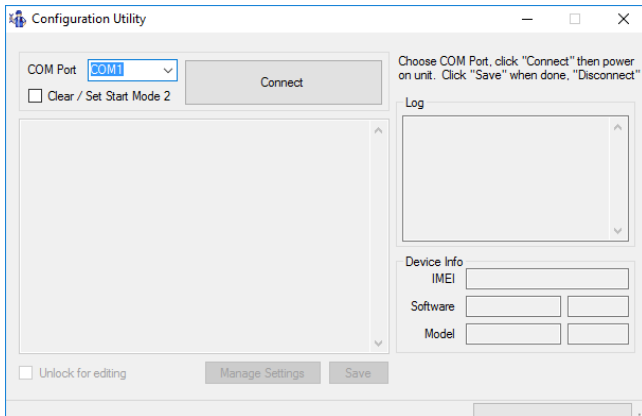
\*If this step fails, please try again. If it fails a second time, please contact your Siretta representative or call us on +44 (0)118 976 9014.

Table 2. LC300-UMTS LED indication

LED colour	State
Red (STAT_LED)	Constant ON: Network search / not registered / call in progress Slow rate once every 3 seconds: Registered full service OFF: Module power down
Green (GPIO 1)	Reserved / Special Function / Test
Blue (GPIO 2)	Reserved / Special Function / Test

**Step 6.** Select the correct COM port for your system and click ‘Connect’ in the configuration tool window.

Change the device settings as required and click ‘Save’ to make changes to the unit.



Your LC300 is now ready to connect to your application using the system settings.

**NOTE** - For more information please see the ‘linkCONNECT Software Manual’

---

## Further Information

For more information when using your LC300, a range of hardware and user manuals are available to download. You can request these from your Siretta representative, alternatively these can be download from [www.siretta.co.uk](http://www.siretta.co.uk)



**sales** +44 (0)118 976 9014

**fax** +44 (0)118 976 9020

**accounts** +44 (0)118 976 9069

**email** [sales@siretta.co.uk](mailto:sales@siretta.co.uk)

[www.siretta.co.uk](http://www.siretta.co.uk)

Basingstoke Road  
Spencers Wood  
Reading  
Berkshire  
RG7 1PW  
United Kingdom

Company No. 08405712  
VAT Registration No. GB163 04 0349

A member of the Olancha Group Ltd

