

8100 SA 7 Zyklop Metal Ratchet Set with push-through square, 1/4" drive, metric,
28 pieces
The Zyklop Ratchets, 1/4"



EAN: 4013288173898
Part number: 05004017001
Article number: 8100 SA 7

Size: 205x90x50 mm
Weight: 684 g
Country of origin: CZ
Customs tariff number: 82041100



- Extremely slim ratchet with long lever
- Return angle of only 4.7°
- Hex-Plus allows socket head screws to live longer
- Very robust without any restrictions on torque
- Absolutely smooth switchover of the non-detachable push-through square

Incredibly compact set arrangement with many tools in a minimum of space. A completely new ratchet set feeling thanks to the unique textile boxes that are very robust and durable. They can be positioned upright for tidy storage on the workshop shelf. Additional surface protection due to textile outer material. Low weight and volume for simpler mobility. "Take it easy" Tool Finder with colour coding according to sizes.

Web link

http://products.wera.de/en/tools_for_the_aerospace_segment_ratchets_the_zyklop_ratchets_1_4_8100_sa_7.html

Wera - 8100 SA 7
05004017001 - 4013288173898

Wera Werkzeuge GmbH
Korzter Straße 21-25
D-42349 Wuppertal
Tel: +49 (0)2 02 / 40 45-0
E-Mail: info@wera.de

**8100 SA 7 Zyklop Metal Ratchet Set with push-through square, 1/4" drive, metric,
28 pieces
The Zyklop Ratchets, 1/4"**



Set contents:



8003 A
05004003001 1 x 1/4"x141.0



8790 HMA
05003503001 1 x 5.0x23.0
05003504001 1 x 5.5x23.0
05003505001 1 x 6.0x23.0
05003506001 1 x 7.0x23.0
05003507001 1 x 8.0x23.0
05003509001 1 x 10.0x23.0
05003510001 1 x 11.0x23.0
05003511001 1 x 12.0x23.0
05003512001 1 x 13.0x23.0



8794 LA
05003526001 1 x 1/4"x150.0



8794 A
05003527001 1 x 1/4"x56.0



8784 A1
05003529001 1 x 1/4"x37.0



851/1 Z PH
05072070001 1 x PH 1x25
05072072001 1 x PH 2x25
05072074001 1 x PH 3x25



855/1 Z PZ
05072080001 1 x PZ 1x25
05072082001 1 x PZ 2x25



867/1 TORX®
05066485001 1 x TX 10x25
05066486001 1 x TX 15x25
05066487001 1 x TX 20x25
05066488001 1 x TX 25x25
05066489001 1 x TX 27x25
05066490001 1 x TX 30x25



840/1 Z Hex-Plus
05056315001 1 x 3.0x25
05056320001 1 x 4.0x25
05056325001 1 x 5.0x25
05056330001 1 x 6.0x25

Web link

http://products.wera.de/en/tools_for_the_aerospace_segment_ratchets_the_zyklop_ratchets_1_4_8100_sa_7.html

Wera - 8100 SA 7
05004017001 - 4013288173898

Wera Werkzeuge GmbH
Korzter Straße 21-25
D-42349 Wuppertal
Tel: +49 (0)2 02 / 40 45-0
E-Mail: info@wera.de

**8100 SA 7 Zyklus Metal Ratchet Set with push-through square, 1/4" drive, metric,
28 pieces
The Zyklus Ratchets, 1/4"**



Zyklus Metal Push



Due to the ever-more confined working environment, space is becoming more and more an issue for the application of ratchets. Our product developers therefore intensively occupied themselves with the issue of confined working spaces, and Wera has now solved this problem. The extremely slim and robust Zyklus Metal ratchet with a long lever was what emerged. When the socket must not get lost and a coincidental change of direction has to be avoided at all cost, the Zyklus Metal Push is the correct choice.



Due to the ever-more confined working environment, space is becoming more and more an issue for the application of ratchets. Our product developers therefore intensively occupied themselves with the issue of confined working spaces, and Wera has now solved this problem. The extremely slim and robust Zyklus Metal ratchet with a long lever was what emerged. When the socket must not get lost and a coincidental change of direction has to be avoided at all cost, the Zyklus Metal Push is the correct choice.

Slim design



Forged, full metal ratchet (chrome-molybdenum) that is extremely robust with a long service life; slim design to enable work in very confined spaces.

Square drive



Smooth push-through mechanism, that cannot get lost.

Web link

http://products.wera.de/en/tools_for_the_aerospace_segment_ratchets_the_zyklus_ratchets_1_4_8100_sa_7.html

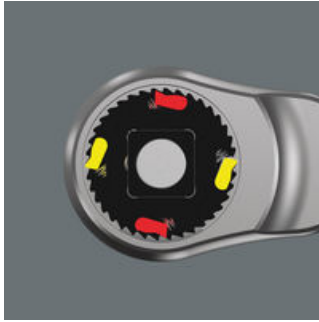
Wera - 8100 SA 7
05004017001 - 4013288173898

Wera Werkzeuge GmbH
Korzter Straße 21-25
D-42349 Wuppertal
Tel: +49 (0)2 02 / 40 45-0
E-Mail: info@wera.de

**8100 SA 7 Zyklop Metal Ratchet Set with push-through square, 1/4" drive, metric,
28 pieces
The Zyklop Ratchets, 1/4"**

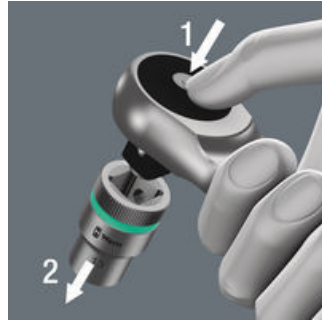


Dual ratchet teeth



The dual-ratchet-teeth design means that a 76 fine-toothing division can be achieved from the 38 robust teeth with a return angle of only 4.7°.

Ball lock



The ball lock holds the sockets and attachments securely, ensuring safe working. A changeover into any predefined position is completed by simply pressing the release button – this is even the case in the 90° position.

Take it easy tool finder system



Take it easy tool finder system - with profile and size colour-coding for quick and easy tool selection. Colour-coded system for hexagon drive screws (L-Keys, Zyklop bit sockets), external hex drive screws and nuts (Joker wrenches, Zyklop sockets and Zyklop bit sockets with holding function), and TORX® drive screws (L-Keys, Zyklop bit sockets).

Textile boxes



The textile boxes offer dramatically improved portability, and are space-saving to boot! This means you can now carry the same collection of tools, in a much more compact and comfortable package. The hassle of running back and forth for the right tools has now become a thing of the past. And the much lower weight of a set makes carrying more convenient than ever before. The textile box including the tool will even survive a fall undamaged.

Web link

http://products.wera.de/en/tools_for_the_aerospace_segment_ratchets_the_zyklop_ratchets_1_4_8100_sa_7.html

Wera - 8100 SA 7
05004017001 - 4013288173898

Wera Werkzeuge GmbH
Korzter Straße 21-25
D-42349 Wuppertal
Tel: +49 (0)2 02 / 40 45-0
E-Mail: info@wera.de