

86 03 125

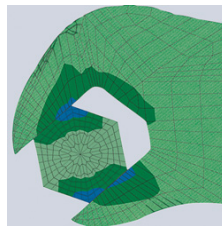
KNIPEX Mini pliers wrench pliers and a wrench in a single tool



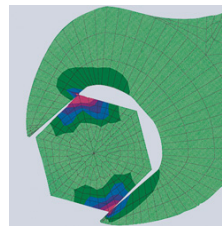
- Replaces the need for sets of metric and imperial spanners
- Smooth jaws for damage free installation of plated fittings - working directly on chrome!
- Adjustable tightening tool
- Also excellent for gripping, holding, pressing and bending workpieces
- Push the button for adjustment on the workpiece
- Zero backlash jaw pressure prevents damage to edges of sensitive components
- Parallel jaws give a more solid grip; its design allows flexible adjustment of all widths up to the specified maximum size
- Reliable catching of the hinge bolt: no unintentional shifting
- The ratchet type principle allows quick and easy tightening and release of all bolted connections
- Lever transmission greater than 10 : 1 for strong gripping power
- Chrome vanadium electric steel, forged, oil-hardened
- The mini pliers wrench for precision mechanics
- Particularly suitable for working on small bolted connections
- Very good access in very confined areas

The smooth jaws grip all parallel surfaces in the capacity range with a high degree of pressure if necessary and open up almost unlimited application possibilities for the pliers wrench: e.g. for tightening locknuts, exerting pressure to activate the adhesive power of contact adhesives, edge breaking in tile work, snapping cable ties, utilisation as a small vice.

Article No.	86 03 125
EAN	4003773077497
Pliers	chrome plated
Handles	plastic coated
B2 mm	5,0
B3 mm	9,5
B1 mm	3,0
Adjustment positions	11
Capacities for nuts Inch	7/8
Capacities for nuts mm	23
Length mm	125
Net weight g	105



Pliers wrench: zero backlash contact pressure, no damage to edges



Conventional open end wrench: edge pressure causes surface damage



technical change and errors excepted

