

86 03 250

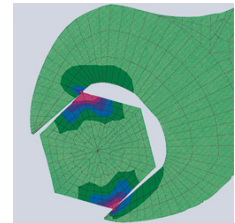
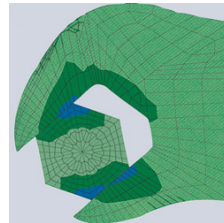
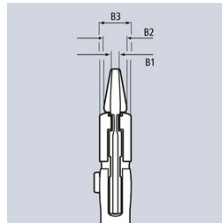
Pliers Wrench pliers and a wrench in a single tool



- Replaces the need for sets of metric and imperial spanners
- Smooth jaws for damage free installation of plated fittings - working directly on chrome!
- Adjustable tightening tool
- Also excellent for gripping, holding, pressing and bending workpieces
- Push the button for adjustment on the workpiece
- Zero backlash jaw pressure prevents damage to edges of sensitive components
- Parallel jaws give a more solid grip; its design allows flexible adjustment of all widths up to the specified maximum size
- Reliable catching of the hinge bolt: no unintentional shifting
- The ratchet type principle allows quick and easy tightening and release of all bolted connections
- Lever transmission greater than 10 : 1 for strong gripping power
- Chrome vanadium electric steel, forged, oil-hardened

The smooth jaws grip all parallel surfaces in the capacity range with a high degree of pressure if necessary and open up almost unlimited application possibilities for the pliers wrench: e.g. for tightening locknuts, exerting pressure to activate the adhesive power of contact adhesives, edge breaking in tile work, snapping cable ties, utilisation as a small vice.

Article No.	86 03 250
EAN	4003773033837
Pliers	chrome plated
Handles	plastic coated
B2 mm	8,0
B3 mm	14,0
B1 mm	8,0
Adjustment positions	17
Capacities for nuts Inch	1 3/4
Capacities for nuts mm	46
Length mm	250
Net weight g	536



Pliers wrench: zero backlash contact pressure, no damage to edges

Conventional open end wrench: edge pressure causes surface damage



Fast adjustment at the touch of a button



Working on plated fittings without damage of the surface



Ideal for bending operations

technical change and errors excepted



replaces the need for sets of metric and imperial spanners

Spare Parts

Article No.	EAN	
--------------------	------------	--

87 09 01	4003773074724	Assortment of spare parts for adjustment for 86/87 250/300 (without 87 2)
----------	---------------	---