

86 06 250

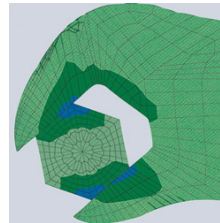
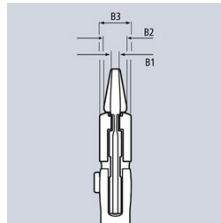
Pliers Wrench pliers and a wrench in a single tool



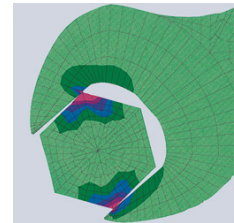
- Replaces the need for sets of metric and imperial spanners
- Smooth jaws for damage free installation of plated fittings - working directly on chrome!
- Adjustable tightening tool
- Also excellent for gripping, holding, pressing and bending workpieces
- Push the button for adjustment on the workpiece
- Zero backlash jaw pressure prevents damage to edges of sensitive components
- Parallel jaws give a more solid grip; its design allows flexible adjustment of all widths up to the specified maximum size
- Reliable catching of the hinge bolt: no unintentional shifting
- The ratchet type principle allows quick and easy tightening and release of all bolted connections
- Lever transmission greater than 10 : 1 for strong gripping power
- Chrome vanadium electric steel, forged, oil-hardened
- With scaling for presetting the width apart from the workpiece

The smooth jaws grip all parallel surfaces in the capacity range with a high degree of pressure if necessary and open up almost unlimited application possibilities for the pliers wrench: e.g. for tightening locknuts, exerting pressure to activate the adhesive power of contact adhesives, edge breaking in tile work, snapping cable ties, utilisation as a small vice.

Article No.	86 06 250
EAN	4003773082408
Pliers	chrome plated
Handles	insulated with multi-component grips, VDE-tested
Insulation standard	IEC 60900 DIN EN 60900
B2 mm	8,0
B3 mm	14,0
B1 mm	8,0
Adjustment positions	19
Capacities for nuts Inch	2
Capacities for nuts mm	52
Length mm	250
Net weight g	515



Pliers wrench: zero backlash contact pressure, no damage to edges



Conventional open end wrench: edge pressure causes surface damage edges

technical change and errors excepted