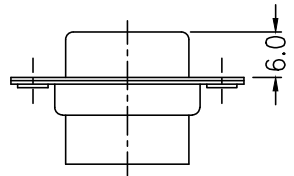
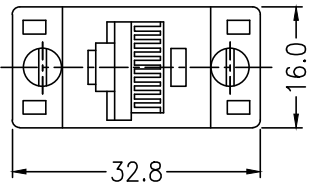
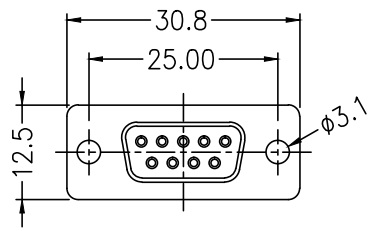


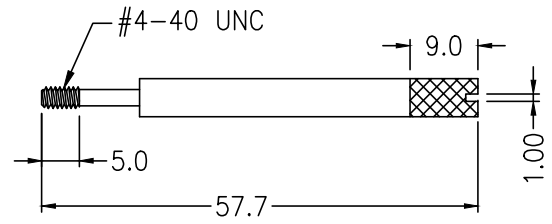
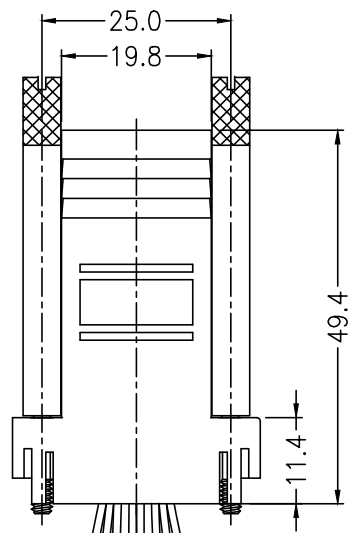
CUSTOMER NEWARK(MCM) FILE NO. 83-2350

THIS DRAWING AND SPECIFICATIONS, HEREIN ARE THE CONFIDENTIAL PROPERTY OF SAMAR AND SHALL NOT BE REPRODUCED OR COPIED OR DISCLOSED IN WHOLE OR IN PART WITHOUT WRITTEN PERMISSION.

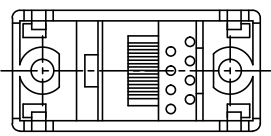
REV.	DESCRIPTION	DRAWN / DATE	APPROVED / DATE
0	INITIAL RELEASE	YANG 11/30/2009	LIN 11/30/2009
1	REVISED SHELL FINISH WAS TIN-PLATED	LIN 07/17/2018	LISA 07/17/2018



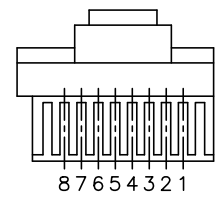
DB9 FEMALE



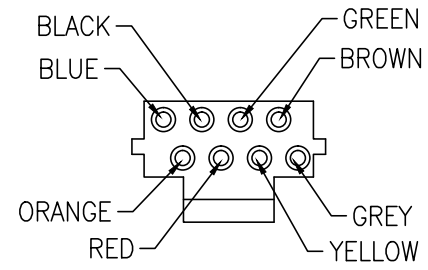
Thumb Screw



FRONT VIEW OF 8P8C TELEPHONE JACK (W/KEYED TYPE)



WIRE SYSTEM: 1 2 3 4 5 6 7 8
 BLU ORG BLK RED GEN YEL BRO GRY



SPECIFICATION:

- 1. D-Sub Connector: nickel-plated shell with black color insulator
- 2. Contact: brass, gold-plated for both D-Sub RJ45 parts.
- 3. Plastic body: ABS, gray color.
- 4. Thumb screw: steel, nickel-plated
- 5. Electronic wire: UL1061, 26AWG

RoHS

DIMENSIONS ARE IN mm [INCH]		TOLERANCES ARE FRACTIONS DECIMALS ANGLES		MATERIAL		P/N 83-2350		DRAWN YANG		DATE 11/30/2009	
MOLD NO.		.x ±0.2 [0.008]		FINISH		PROJECT NO.					
83-2350		.xx ±0.12 [0.005]		COLOR		SCALE 1:1		SIZE A4		SHEET 1 OF 1	



39C0700, DB-9P FEMALE TO RJ45 8 CONDUCTOR

MN010