

FEATURES AND SPECIFICATIONS



PowerCat 6 Category 6, Twisted Pair Slim Boot Patch Cords with Strain Relief Boots

Features and Benefits

Molex PowerCat 6, Category 6 Slim Boot Patch Cords provide an effective solution to the problem of patch cord congestion in high density 1U active equipment. Ideal for hubs/switches where space between individual RJ45 jacks is limited.

The slim boot patch cord still provides the assurance of anti-snag latch protection whilst eliminating the difficulty associated with patching and re-patching traditionally larger over-moulded patch cords.

- Unshielded 4 pair stranded cable
- ETL Verified
- Slim Boot Design
- Suitable for high density active equipment with limited space between individual RJ45 jacks
- Available in 5 colours to facilitate improved wiring closet manageability
- Suitable for EIA 568A/B applications

Technical Information

Mechanical

Cable

Conductor size: 24 AWG stranded bare copper
Max O.D.: 5.6mm (.22")
Jacket: PVC or LSZH
Temperature range: -20°C to +60°C

Mechanical Characteristics

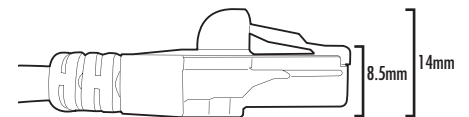
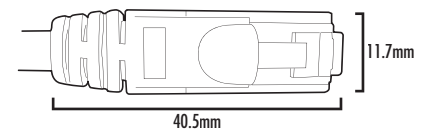
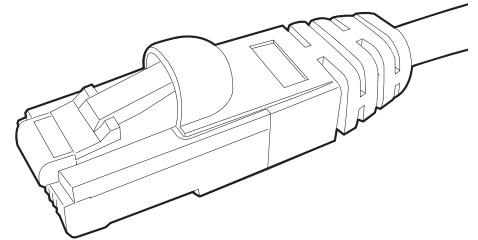
Plug

Operating life: Minimum 750 insertion cycles
Contact material: Copper alloy
Contact plating: 50µ" Gold/100µ" Nickel
Plug dimensions & tolerances compliant with FCC Part 68 and IEC 60603-7
Approvals: UL, CSA

Electrical Characteristics

Plug

Max voltage: 150 VAC (max)
Max current: 1.5A @ 25°C
Operating temperature: -40°C to 85°C



ORDERING INFORMATION

PVC Sheath	LSZH Sheath	Description
PCD-00347-0*	PCD-00363-0*	PowerCat 6 Slim Boot Patch Cord, 568A/B, 0.5m
PCD-00348-0*	PCD-00364-0*	PowerCat 6 Slim Boot Patch Cord, 568A/B, 1m
PCD-00349-0*	PCD-00365-0*	PowerCat 6 Slim Boot Patch Cord, 568A/B, 1.5m
PCD-00350-0*	PCD-00366-0*	PowerCat 6 Slim Boot Patch Cord, 568A/B, 2m
PCD-00352-0*	PCD-00368-0*	PowerCat 6 Slim Boot Patch Cord, 568A/B, 3m
PCD-00354-0*	PCD-00370-0*	PowerCat 6 Slim Boot Patch Cord, 568A/B, 4m
PCD-00355-0*	PCD-00371-0*	PowerCat 6 Slim Boot Patch Cord, 568A/B, 5m
PCD-00356-0*	PCD-00372-0*	PowerCat 6 Slim Boot Patch Cord, 568A/B, 6m
PCD-00357-0*	PCD-00373-0*	PowerCat 6 Slim Boot Patch Cord, 568A/B, 7m
PCD-00358-0*	PCD-00374-0*	PowerCat 6 Slim Boot Patch Cord, 568A/B, 8m
PCD-00359-0*	PCD-00375-0*	PowerCat 6 Slim Boot Patch Cord, 568A/B, 9m
PCD-00360-0*	PCD-00376-0*	PowerCat 6 Slim Boot Patch Cord, 568A/B, 10m
PCD-00361-0*	PCD-00377-0*	PowerCat 6 Slim Boot Patch Cord, 568A/B, 15m
PCD-00362-0*	PCD-00378-0*	PowerCat 6 Slim Boot Patch Cord, 568A/B, 20m

Replace "*" in the part number above with one of the following to specify patch cord colour:



This information is correct as at the time of publication, specifications are subject to change

Corporate Headquarters
Tel: 630 969 4550
www.molexpn.com

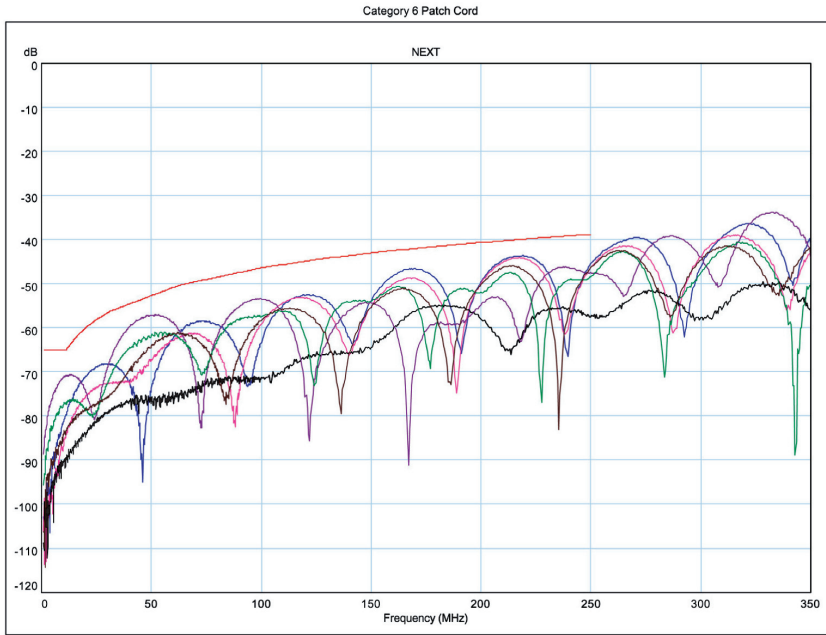
European Headquarters
Tel: 44 (0) 1489 572111
www.molexpn.co.uk

Pacific Rim Headquarters
Tel: 61 3 9971 7111
www.molexpn.com.au

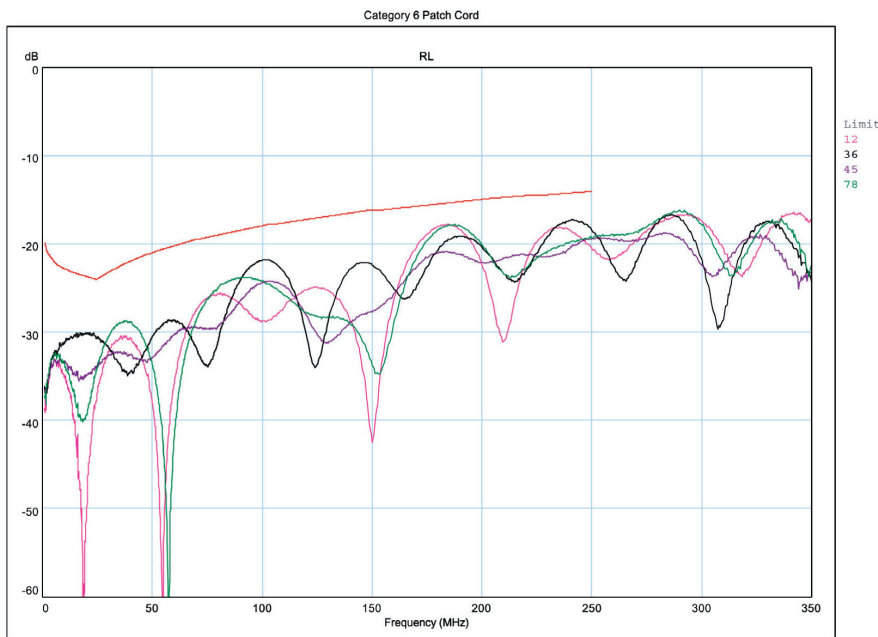




PowerCat 6 Category 6, Twisted Pair Slim Boot Patch Cords with Strain Relief Boots



Cat 6 2 m Patch Cord - UTP 100 Ohm Cat 6



Cat 6 2 m Patch Cord - UTP 100 Ohm Cat 6

ETL Category 6 Component Compliance

This information is correct as at the time of publication, specifications are subject to change

Corporate Headquarters
Tel: 630 969 4550
www.molexpn.com

European Headquarters
Tel: 44 (0) 1489 572111
www.molexpn.co.uk

Pacific Rim Headquarters
Tel: 61 3 9971 7111
www.molexpn.com.au