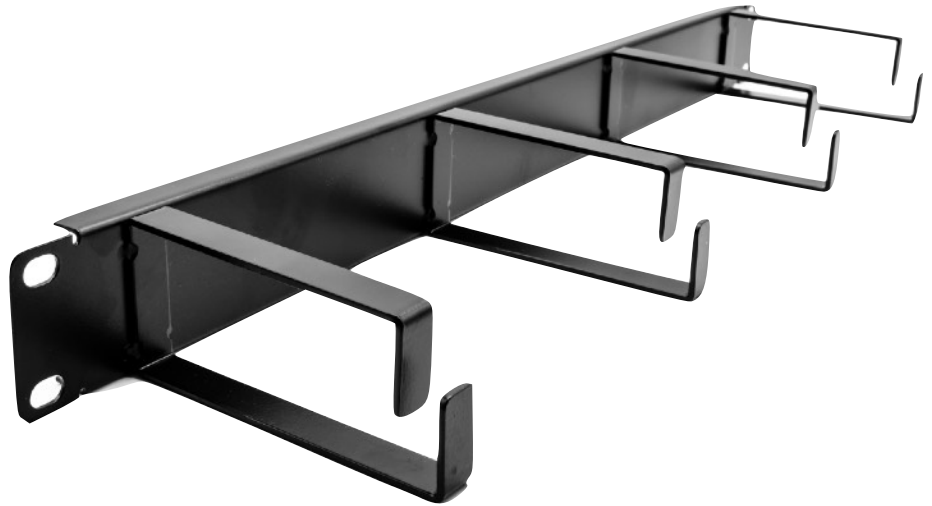


CAB-MAN-1U-10

1U Rack-mount  
10-cm 4-Ring  
Cable Management



## Quality Cable Management Solutions For Cabinets

Need effective cabling routing within your data cabinet or enclosure?  
Need to maintain effective post installation maintenance of networking or PBX patching?

The new **CAB-MAN-1U-10** is a quality, alloy manufactured 4-ring cable management panel, 1U in height but unique in that it features larger, 10cm alloy management rings. Ideal for higher density cables, STP cables or indeed broadcast and RF coax cables which generally have a higher overall diameter.

Fit between patching panels, network switches or any other device that has multiple ports and thus multiple patch routing, it will help tidy up almost all enclosure installation and make post-maintenance task much easier.

## specifications:

**1U, 4-Ring, 19-inch Cable Management Panel**

Standard 10cm (H), 4.1cm aperture alloy ring design

**Quality, alloy constructed, powered coated design**

Ideal for effective post-installation patching cable routing

**Helps keep switch ports clear and identifiable**

Perfect for wall, telecom, data and server enclosures

**Overall dimensions:** 48.3cm (W) x 4.4cm (H) approx.  
Rings: 10cm (H) x 4.1cm (Aperture)



Copyright 2018 LMS Data  
All trademarks acknowledged E&OE.  
Details subject to change