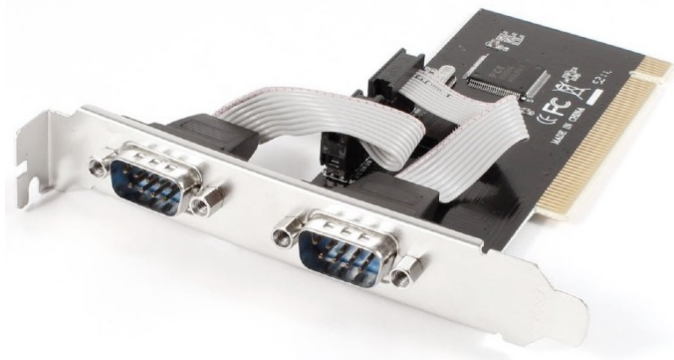


# PCI-RS232

2-Port Serial  
PCI Adapter



Serial Communications With Flexibility



Server  
Connectivity



Workstation  
& Desktop



Legacy  
Connectivity



Industrial  
Applications

Connecting Your Legacy Peripherals The Easy Way

Do you need previous technology interface ports such as serial (RS232) to connect to your legacy peripherals?

Today's computer's do not include the once standard Serial (RS232) interface, relying mostly on USB and WiFi(tm). However, there are many legacy applications that still need this tried and trusted communications port.

Examples include Modems, ISDN and redundantly protected business communications. Offering assured communications, even over extended distances, serial communications are still very much at the forefront of professional applications, big or small.

Offering legacy serial communications, the Dynamode

**PCI-RS232** allows either single or dual serials communications from compatible computers.

## specifications:

Industry-standard Serial (RS232) 9-Pin, Ports x2

**Plug n' Play 32-Bit PCI interface card design**

Full height riser bracket with x2 DB-9 connectors

**RISC architecture improves performance and lifespan**

Ideal for legacy apps: modems, printers, industrial etc

**Compatible with Windows(tm)XP, 2000(tm)**

**Windows(tm)7, Windows(tm)8, Windows(tm)10**

**Compatible with Linux(tm) runtimes**

 Windows 10





**Dynamode®**

Copyright 2018 Dynamode  
All trademarks acknowledged E&OE.  
Details subject to change