

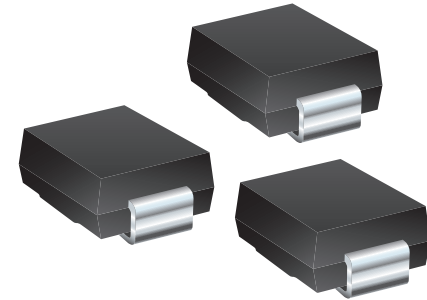
ESD Protection Product Solutions
Bourns® TVS SMC Package Diode Design Kit

**RoHS
Compliant**

*RoHS Directive 2015/863, Mar 31, 2015
and Annex.

TRANSIENT VOLTAGE SUPPRESSOR (TVS) DIODES
5.0SMDJ Series

Design Kits for most Bourns® product lines are available.
Contact your nearest Bourns sales office for more information.



BOURNS®

CD-LAB10



5.0SMDJ10A
V_{WM} = 10 V
 Unidirectional
 Single Line

5.0SMDJ10CA
V_{WM} = 10 V
 Bidirectional
 Single Line

5.0SMDJ11A
V_{WM} = 11 V
 Unidirectional
 Single Line

5.0SMDJ11CA
V_{WM} = 11 V
 Bidirectional
 Single Line

5.0SMDJ12A
V_{WM} = 12 V
 Unidirectional
 Single Line

5.0SMDJ12CA
V_{WM} = 12 V
 Bidirectional
 Single Line

5.0SMDJ13CA
V_{WM} = 13 V
 Bidirectional
 Single Line

5.0SMDJ14CA
V_{WM} = 14 V
 Bidirectional
 Single Line

5.0SMDJ15A
V_{WM} = 15 V
 Unidirectional
 Single Line

5.0SMDJ15CA
V_{WM} = 15 V
 Bidirectional
 Single Line

5.0SMDJ16CA
V_{WM} = 16 V
 Bidirectional
 Single Line

5.0SMDJ20A
V_{WM} = 20 V
 Unidirectional
 Single Line

5.0SMDJ20CA
V_{WM} = 20 V
 Bidirectional
 Single Line

5.0SMDJ24A
V_{WM} = 24 V
 Unidirectional
 Single Line

5.0SMDJ24CA
V_{WM} = 24 V
 Bidirectional
 Single Line

5.0SMDJ26CA
V_{WM} = 26 V
 Bidirectional
 Single Line

5.0SMDJ28A
V_{WM} = 28 V
 Unidirectional
 Single Line

5.0SMDJ28CA
V_{WM} = 28 V
 Bidirectional
 Single Line

5.0SMDJ30A
V_{WM} = 30 V
 Unidirectional
 Single Line

5.0SMDJ30CA
V_{WM} = 30 V
 Bidirectional
 Single Line

5.0SMDJ33A
V_{WM} = 33 V
 Unidirectional
 Single Line

5.0SMDJ33CA
V_{WM} = 33 V
 Bidirectional
 Single Line

5.0SMDJ36A
V_{WM} = 36 V
 Unidirectional
 Single Line

5.0SMDJ36CA
V_{WM} = 36 V
 Bidirectional
 Single Line

5.0SMDJ40A
V_{WM} = 40 V
 Unidirectional
 Single Line

5.0SMDJ40CA
V_{WM} = 40 V
 Bidirectional
 Single Line

5.0SMDJ45A
V_{WM} = 45 V
 Unidirectional
 Single Line

5.0SMDJ45CA
V_{WM} = 45 V
 Bidirectional
 Single Line

5.0SMDJ48A
V_{WM} = 48 V
 Unidirectional
 Single Line

5.0SMDJ48CA
V_{WM} = 48 V
 Bidirectional
 Single Line

5.0SMDJ58A
V_{WM} = 58 V
 Unidirectional
 Single Line

5.0SMDJ64A
V_{WM} = 64 V
 Unidirectional
 Single Line