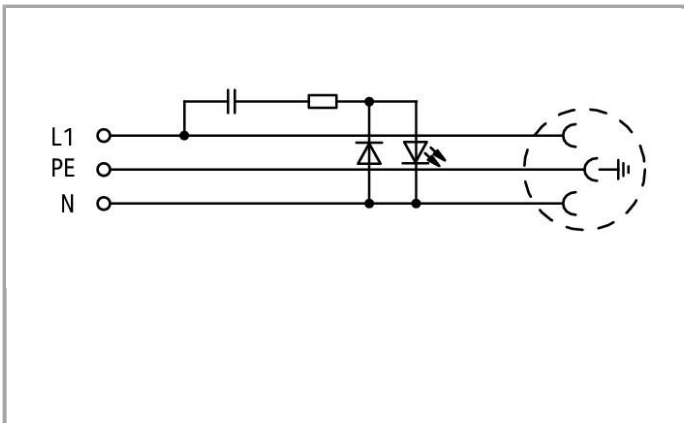
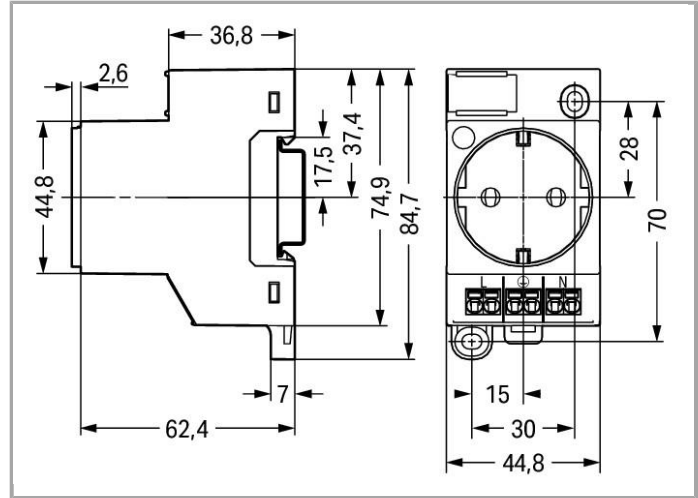


Data sheet | Item number: 709-582

Switchgear cabinet outlet; for DIN-rail and screw mounting; for plug, type F, CEE 7/4 (Schuko); common in DE, NL, AT; with LED status indicator; with Push-in Cage Clamp double connection



www.wago.com/709-582



Data
Electrical data



| | |
|------------------|----|
| Voltage type (1) | AC |
|------------------|----|

Ratings per IEC/EN 60664-1

| | |
|---------------------------------|-------|
| Rated voltage (III / 3) | 250 V |
| Rated impulse voltage (III / 3) | 2 kV |
| Rated current | 16 A |

Connection data

| | |
|---------------------------------|---|
| Connection type (1) | L, PE, N |
| Connection technology | Push-in CAGE CLAMP® |
| Actuation type | Push-in |
| Actuation direction (1) | Operation parallel to conductor entry |
| Connectable conductor materials | Copper |
| Nominal cross section | 2.5 mm ² |
| Solid conductor | 0.2 ... 2.5 mm ² / 24 ... 14 AWG |
| Stranded conductor | 0.2 ... 2.5 mm ² / 24 ... 14 AWG |
| Fine-stranded conductor | 0.2 ... 2.5 mm ² / 24 ... 14 AWG |
| Strip length | 9 ... 10 mm / 0.35 ... 0.39 Inch |
| No. of poles | 3 |
| Number of connection types | 3 |
| Number of test slots | 2 |

Geometrical Data

| | |
|---------------------------------------|----------------------|
| Width | 45 mm / 1.772 inch |
| Height | 65 mm / 2.559 inch |
| Height from the surface | 65 mm / 2.559 inch |
| Height from upper-edge of DIN-35 rail | 59.8 mm / 2.354 inch |
| Depth | 84.7 mm / 3.335 inch |

Mechanical data

| | |
|----------------------|-------------|
| Type of mounting | DIN-35 rail |
| Degree of protection | IP20 |
| Potential marking | L N |

Material Data

| | |
|-----------------------------|----------------------|
| Color | signal yellow |
| Material group | I |
| Insulating material | Polyamide 66 (PA 66) |
| Flammability class per UL94 | V0 |



| | |
|--------------------------|-----------------------------------|
| Clamping spring material | Chrome nickel spring steel (CrNi) |
| Contact material | Copper alloy |
| Contact plating | Sn |
| Weight | 81.6 g |

Commercial data

| | |
|-------------------|---------------|
| Packaging type | BOX |
| Country of origin | BG |
| GTIN | 4055143718325 |

Approvals / Certificates

Country specific Approvals

| Logo | Approval | Certificate name |
|--|--|------------------------|
|  | VDE VDE Prüf- und Zertifizierungsinstitut | 40047680 (IEC 60884-1) |

Downloads

smartDATA

CAD data

| | | |
|---------------------|-----|----------|
| 3D Download 709-582 | URL | Download |
|---------------------|-----|----------|

Subject to changes.