

# AC Frame Solenoid



## Model 2HD

### Features:

- Available return spring kit
- AC & DC Applications
- See Model 2HD DC
- UL recognized

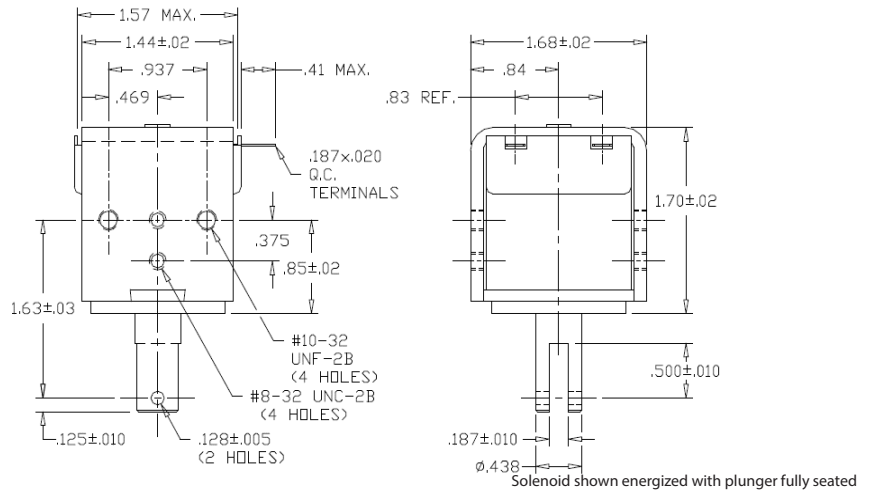
### Electrical:

- Coil Voltages: 24, 120, 240 VDC standard
- Coil Termination: 3/16" QC terminals
- Duty Cycle: 100% Continuous, 25% Intermittent, 10% Intermittent, 1% Pulse
- Coil treatment: Plastic cover
- Insulation Class: Class A Rating - 105° C (221° F)
- Dielectric Strength: 1500V 60 Hz

### Mechanical:

- Size: 1.70" (L) x 1.68" (W) x 1.57" (H)
- Plunger Diameter: 0.438"
- Plunger Guide Material: Plastic
- Mounting: 4 - #8-32 holes
- Weight: Plunger 1.2 oz, Total 11.7 oz
- Life Expectancy: 1 Million Cycles<sup>1</sup>

<sup>1</sup> - Dependent on load conditions



### Standard Part Numbers

| Model No.  | Part No.       | Duty Cycle | Voltage | Resistance <sup>2</sup> (Ω) | Power (W) | Current |
|------------|----------------|------------|---------|-----------------------------|-----------|---------|
| 2HD-C-120A | A420-065486-00 | Cont.      | 120VAC  | 101                         | 16.5      | 138 mA  |
| 2HD-I-120A | A420-065487-00 | Inter. 25% | 120VAC  | 42                          | 66        | 550 mA  |
| 2HD-C-240A | A420-065488-00 | Cont.      | 240VAC  | 404                         | 16.5      | 69 mA   |
| 2HD-I-240A | A420-065489-00 | Inter. 25% | 240VAC  | 140                         | 66        | 275 mA  |

<sup>2</sup> - Coil resistance tolerance +/- 5%

Contact us for custom voltages or duty cycles

**Available Customization:**

- Plunger
- AC Voltage
- Duty Cycle
- Insulation systems up to class H 180° C (356° F)

**\* Minimum quantities apply**

| Stroke (in.)     | Typical Pull Force Ounces [N] @ 20°C (68°F)<br>(Distance from fully seated position) |           |           |           |          |          | HOLDING FORCE Ounces [N] |
|------------------|--|-----------|-----------|-----------|----------|----------|--------------------------|
|                  | 0.125  | 0.250     | 0.375     | 0.500     | 0.625    | 0.750    |                          |
| Continuous 100%  | 26 [7.2]   | 22 [6.1]  | 20 [5.6]  | 18 [5]    | 14 [3.9] | 9 [2.5]  | 55 [15.3]                |
| Intermittent 25% | 64 [17.8]  | 52 [14.5] | 48 [13.3] | 40 [11.1] | 32 [8.9] | 20 [5.6] | 70 [19.5]                |

Continuous Duty = 100% On Time  
Intermittent Duty 25% = 25% On Time (5 Minutes On Max Followed By 15 Minutes Off)

Optional Return Spring Kit

A490-367462-00

