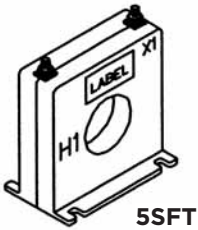
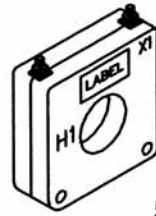


Model 5

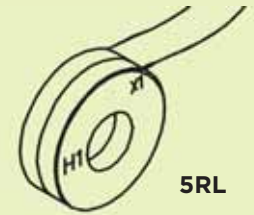
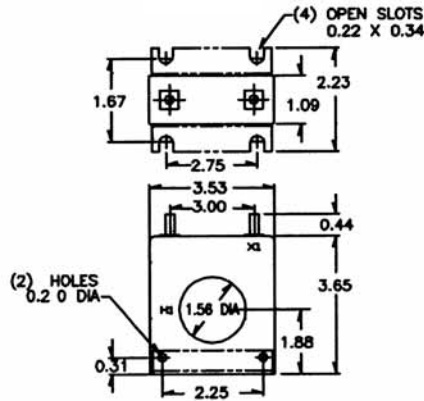
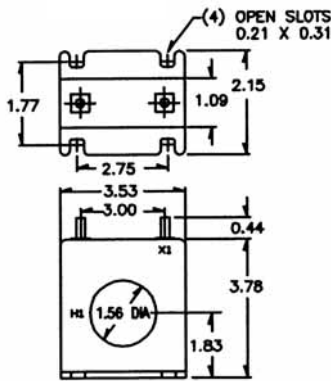
Window Diameter 1.56"



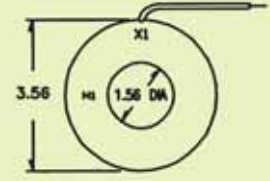
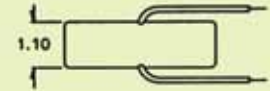
5SFT



5SHT



5RL



Application:

With ammeters, wattmeters and cross current compensation.

Frequency:

50-400Hz

Insulation Level:

- 600 Volts, 10kV BIL full wave
- Flexible leads are UL 1015 105°C, CSA approved #16 AWG, 24" long
- Non-standard length to be specified
- Terminals are brass studs No. 8-32 UNC with one flat washer, lockwasher and regular nut
- SHT and SFT case styles also available as SHL and SFL with leads
- Mounting bracket kit when required for Model 5SHT
- Approximate weight: 1.0 lb

Catalogue Number	Current Ratio	Accuracy at 60Hz	Burden VA at 60Hz
5**-500	50:5	± 2%	1.0
5**-750	75:5	± 2%	1.5
5**-101	100:5	± 2%	2.0
5**-151	150:5	± 1%	5.0
5**-201	200:5	± 1%	5.0
5**-251	250:5	± 1%	10.0
5**-301	300:5	± 1%	12.5
5**-401	400:5	± 1%	12.5
5**-501	500:5	± 1%	20.0
5**-601	600:5	± 1%	25.0
* 5**-751	750:5	± 1%	25.0
* 5**-801	800:5	± 1%	25.0
* 5**-102	1000:5	± 1%	25.0
* 5**-122	1200:5	± 1%	30.5

****NOTE:** When ordering, prefix Catalogue Number with model designation required, i.e. 5SFT-500, 5RL-500, etc.

Approvals

