

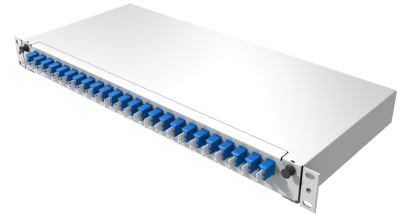
## Fiberframe Lite

### Description

Fiberframe Lite, 24 x LCD adaptor blue, OS2, UPC, 48 x pigtails, no code  
 FL1-BLCUD-2448-SM-100-0OS0

#### Features

- Standard 19" 1U size
- Robust steel construction
- Telescopic drawer with tilt of 15°
- Multifunctional back plate
- Up to 48 fibers per 1U
- ACS splice cassette technology accepting up to 24 fibers per cassette
- Optional zero space cable management bar



### Technical data

#### Mechanical data

Characteristics	Values
Product family	Fiberframe
Suitable for	Splicing
Dimension (Width x Length x Height) (mm)	448 x 200 x 44
Dimension (Width x Length x Height) (inch)	17.6 x 7.9 x 1.7
Weight (kg)	2.4
Weight (lbs)	5.3
Material module	powder coated steel
Colour module	light grey (RAL 7035)
Number of cassettes (pcs)	2
Mounting type	Front mounting
Drawer Tilt (°)	15
Number of Adaptor front (pcs)	24
Adaptor type front	LC
Adaptor type front polishing	UPC
Adaptor colour front	blue
Colour code	NO CODE

#### Optical data

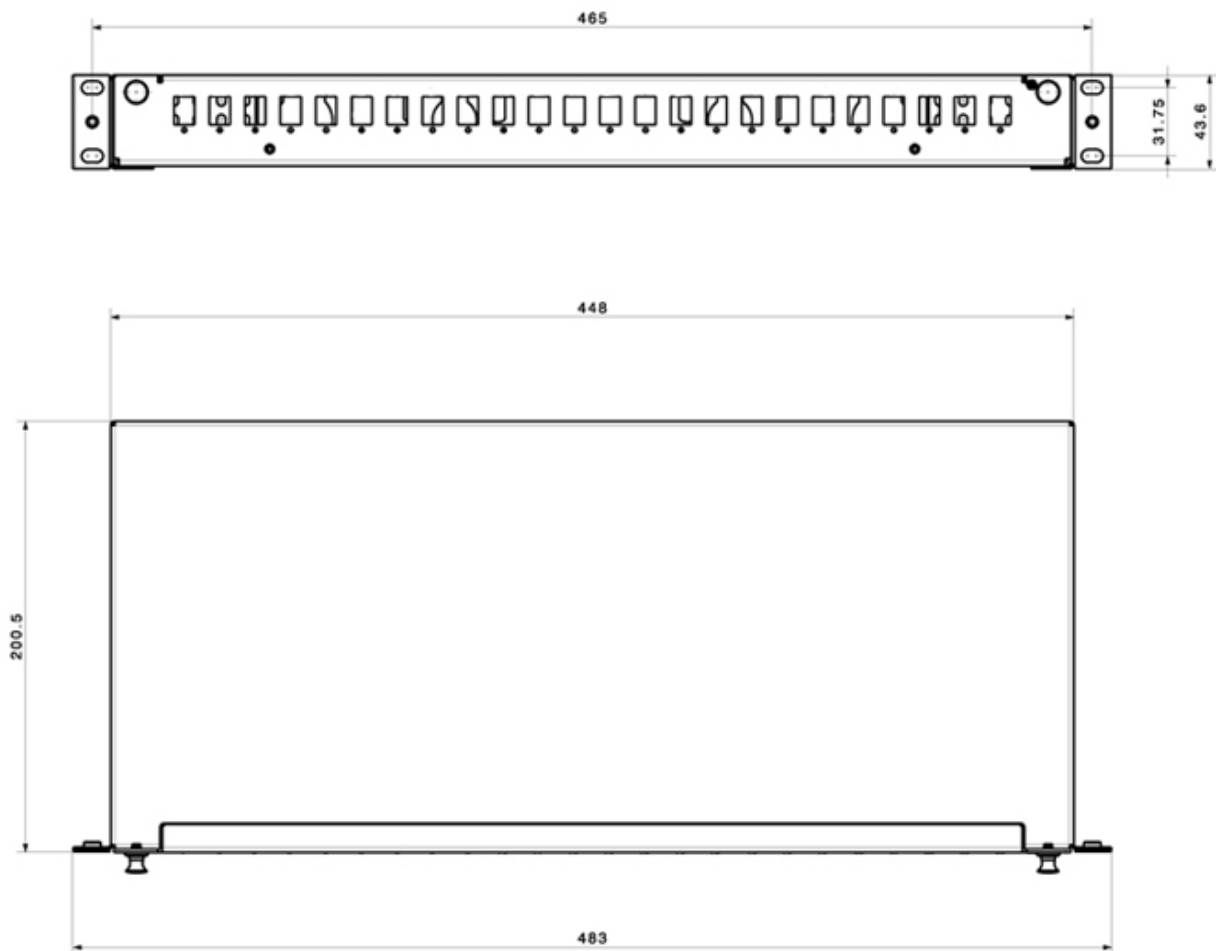
Characteristics	Values
Fiber type	Singlemode 9/125 µm OS2
Module insertion loss	Singlemode OS2: <=0.50 dB
Module return loss	Singlemode OS2 PC: >=50dB

#### Environmental data

Characteristics	Values
Resistance to impact	IK03
Ingress protection degree	IP20
Free of halogen	Yes
RoHS compliant	Yes
REACH compliant	Yes

## Fiberframe Lite

### Technical drawing



### Ordering information

Description	Item number
Fiberframe Lite, 24 x LCD adaptor blue, OS2, UPC, 48 x pigtails, no code	85063232

### Related Documents

Installation manual

DOC-0000711379