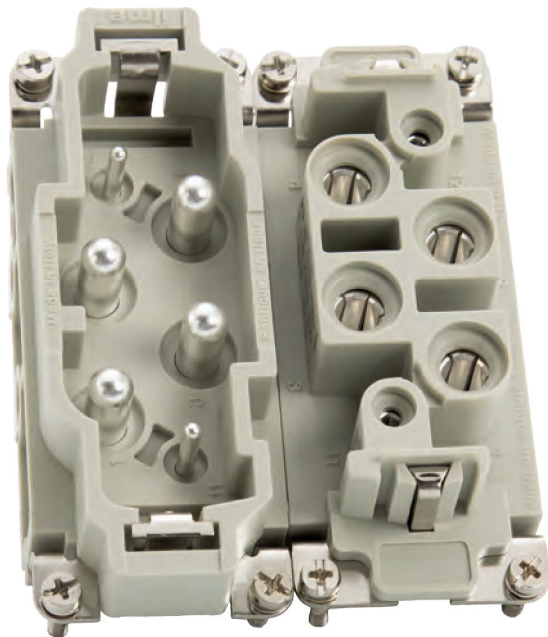


---

## CX INSERTS

CXF 4/0, CXM 4/0, CXF 4/2, CXM 4/2

---



4 poles 80A

(+2 aux 16A 400V)

screw type connector inserts

upgrade to 830V AC or DC

(from previous voltage 690V)



Find more  
information on  
our products at  
[www.ilme.com](http://www.ilme.com)

## TECHNICAL FEATURES

### CXF 4/0, CXM 4/0, CXF 4/2, CXM 4/2

To achieve a **higher rated voltage** of their four 80A rated power contacts, up to **830V AC or DC**, these screw type inserts size “57.27” – which in the 4/2 variant have also 2 auxiliary contacts for up to 16A at 400V AC or DC – have been now upgraded by reshaping their mating face to increase the insulating distances.

The new inserts maintain the same part numbers and are fully backwards compatible with previous 690V-rated versions. In case of mating with a 690V old version, the connector shall be used at no more than 690V.

upgrade achieved  
by reshaping  
the mating face  
to increase the  
insulating distances

