

IEC Appliance Outlet J, Screw-on Mounting, Front Side, Solder or Quick-connect Terminal



Description

- Panel Mount:
Screw-on mounting from front side
- 1 Function
- Connector, Pin temperature 70 °C, Protection class I
- Solder terminals or quick connect terminals

Approvals

- UL File Number: E103791
- CSA File Number: 73165
- CCC File Number: 2011010204483968

References

We recommend for new applications the new type [4797](#)

Weblinks

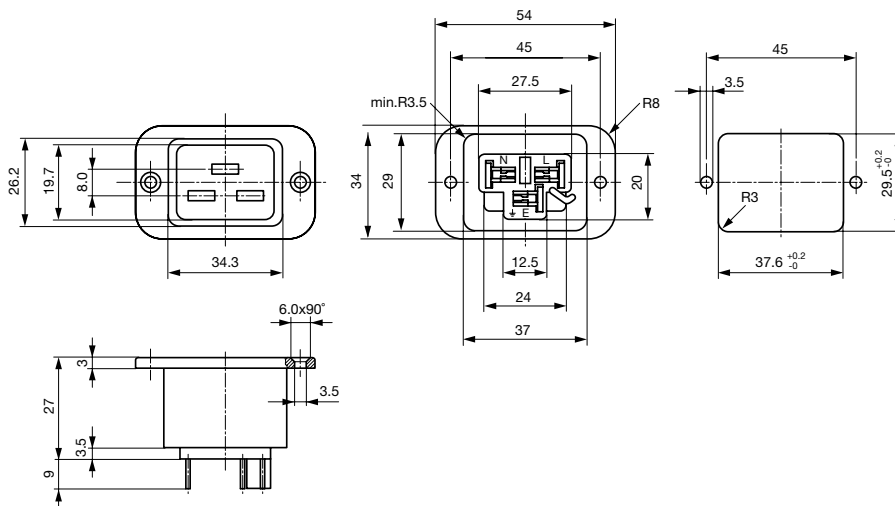
[pdf-datasheet](#), [html-datasheet](#), [General Product Information](#), [Approvals](#), [CE declaration of conformity](#), [RoHS](#), [CHINA-RoHS](#), [REACH](#), [Mating Connectors](#), [e-Shop](#), [SCHURTER-Stock-Check](#), [Distributor-Stock-Check](#), [CAD-Drawings](#), [Accessories](#), [Detailed request for product](#)

Technical Data

| | |
|---------------------------|---|
| Ratings IEC | 16A / 250VAC; 50Hz |
| Ratings UL/CSA | 20A / 250VAC; 60Hz |
| Dielectric Strength | > 2kVAC between L-N > 2kVAC between L/N-PE (1 min/50Hz) |
| Allowable Operation Temp. | -25 °C to 70 °C |
| Degree of Protection | from front side IP 30 acc. to IEC 60529 |
| Protection Class | Suitable for appliances with protection class I acc. to IEC 61140 |
| Terminal | Solder terminals or quick connect terminals |
| Panel Thickness s | Screw: max 8 mm Mounting screw torque max 0.5Nm |
| Material: Housing | Thermoplastic, black, UL 94V-0 |

| | |
|------------------|---|
| Appliance Outlet | J acc. to IEC 60320, UL 498, CSA C22.2 no. 42 (for cold conditions) pin-temperature 70 °C, 16A, Protection Class I |
|------------------|---|

Dimensions



All Variants

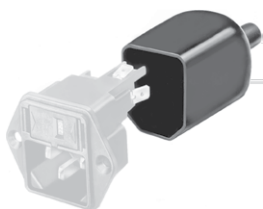
| Terminal | Order Number |
|--------------------------------------|---------------------------|
| Quick connect terminals 6.3 x 0.8 mm | 6653.3300 |
| Solder terminals 4.8 x 0.8 mm | 6653.3100 |

Availability for all products can be searched real-time:<http://www.schurter.com/en/Stock-Check/Stock-Check-SCHURTER>

Packaging unit 50 Pcs

Accessories

Description



[Assorted Covers](#)
Rear Cover



[Cord retaining kits](#)
Cord retaining strain relief

Mating Inlets/Plugs

Category / Description



[Plug Overview complete](#)

IEC Plug I, Cord Connector (Rewireable), Angled [4789](#)

IEC Plug I, Cord Connector (Rewireable), Straight [4796](#)

[Plug further types to 0723](#)