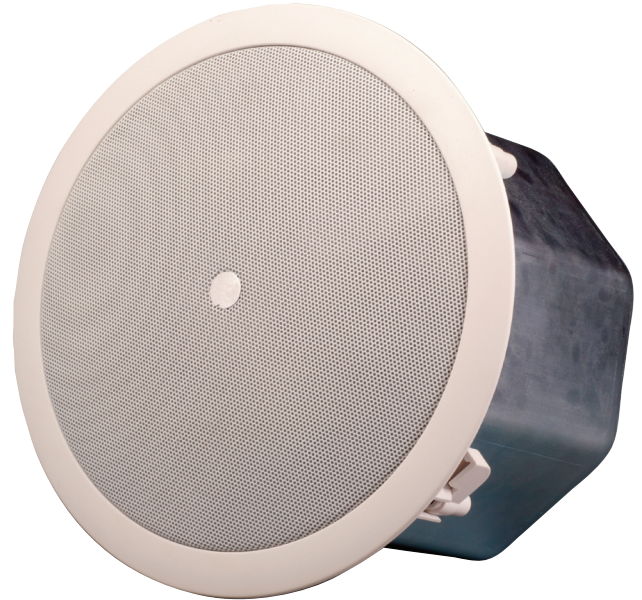




## Overview

The C165W is a 60-watt 6.5-inch high performance ceiling mount loudspeaker. Ideal for any background music or paging system where superior sound quality is a priority, this speaker is made for louder club or restaurant / retail environments. Featuring an innovative design and employing high quality materials, the C165W maintains excellent performance from a compact ceiling loudspeaker. The C165W contains a coaxial 6.5-inch woofer and 3/4-inch titanium coated tweeter. Built in 70-volt taps at 7.5, 15, 30 or 60-watt operation means that high fidelity full range sound can be achieved over an extremely wide coverage pattern area. Virtually any 70-volt amplification or paging system, including the Coliseum CA1 or CA1T can drive the C165W.



## Features

- 60-watt 6.5-inch high performance ceiling mount loudspeaker
- 70-volt taps at 7.5, 15, 30 or 60-watts
- 100-volt taps at 15, 30 or 60-watts
- Coaxial 6.5-inch woofer and 3/4-inch titanium coated tweeter



## Specifications

System Type	Celing Speaker
Active or Passive	Passive
Program Power (Watts)	60
Biampable	No
Nominal Impedance (Ohms)	70 Volt Transformer
Sensitivity (dB @1Watt/1m)	92
Max SPL (dB)	110
Frequency Response (Hz +/- 3dB)	100 - 20,000
Driver Configuration	6.5-inch woofer 3/4-inch tweeter
HF Dispersion (°H x °V)	120
Inputs - Screw Terminal	Yes
Enclosure Materials	Aluminum / ABS Plastic
Grille	Metal
Dimensions (DWH xbackW, inches)	10 x 10 x 7
Dimensions (DWH xbackW, cm)	25 x 25 x 18
Weight (lbs/kg)	7.3 / 3.3

*Specifications subject to change without notice*