

# CLIMATECAB CABINETS

CLIMATE-CONTROLLED CABINETS

## CLIMATECAB™ CABINETS

### Put a micro-data center almost anywhere

- Cut energy costs and save by cooling only the cabinet, not the entire room
- Ideal for indoor use when you need to keep your servers outside a climate-controlled data center
- NEMA 12 rated with fully gasketed openings to provide protection against falling dirt; circulating dust, lint, and debris; and dripping or splashing liquids in indoor environments
- Air conditioners keep equipment cool even with ambient temperatures up to 130° F
- High-efficiency, closed-loop cooling system recirculates air
- All feature a robust fully welded 12-gauge steel frame and 14- or 16-gauge sides and key door locks

### FREESTANDING CLIMATECAB CABINETS

#### Hold up to 1500 pounds in harsh environments

- Digitally controlled air conditioners are available in 6000, 8000, and 12,000 BTUs (1758, 2344, and 3516 W) and in 120V or 230V (other models available upon request)
- No plumbing needed. An internal evaporator eliminates condensation
- Holds up to 1500 pounds
- Available with M6 or 16-32 tapped rails
- PLEXIGLAS® window in front door
- Gland plates provide protected cable access
- Three-point locking handles on front and rear doors
- Casters and levelers are included for easy placement
- Choose from 24U and 42U models

The ClimateCab NEMA 12 Cabinet is the answer when you need to house servers or IT equipment outside the data center, especially in harsh environments, and don't have a cooling infrastructure in place.

In smaller installations, you can save thousands and a lot of headaches by using a ClimateCab cabinet instead of installing a data center with a cooling system and raised floors.

The digitally controlled air-conditioning unit (included) keeps equipment cool and removes heat buildup by using closed-loop cooling. Sealed cable entries prevent air exchange with warm ambient air. Just install your equipment, plug in the AC unit, and you have a complete, self-contained, self-supporting micro data center. No plumbing is needed as an internal evaporator eliminates condensation.

The AC unit can easily be installed on the outside of the cabinet by two people in about five minutes.



CC42U6000M6

#### What's included

- ClimateCab NEMA 12 Cabinet with M6 or Tapped Rails
- 6000-, 8000-, or 12,000-BTU air-conditioning unit
- Hardware to mount the AC to the cabinet and Instructions

## WALLMOUNT CLIMATE CAB ENCLOSURES

### Secure protection for any location

- Holds up to 100 pounds
- Models available with 800 BTU AC units or fans
- Seamless door gaskets keep out dust and contaminants
- Includes 19" rails with 10/32 mounting holes. Square-holed racks are available on request
- Scratch-resistant safety glass window provides easy viewing
- Model with gland plate provides top and bottom cable access

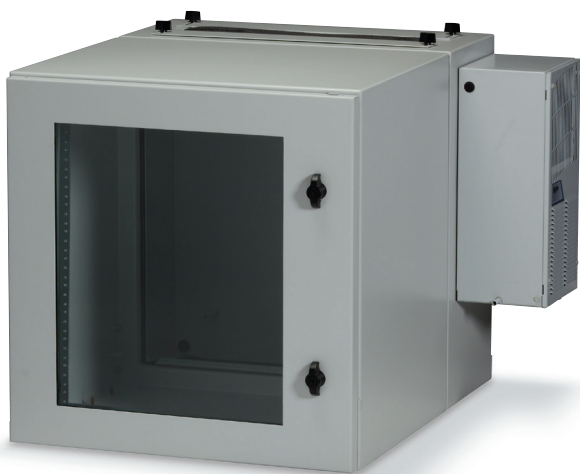
When you need to install rackmount equipment in less-than-ideal environments but don't need a full-size cabinet, ClimateCab NEMA 12 Wallmount Cabinets are the answer. Their self-contained cooling system keeps your equipment housed in ideal conditions in virtually any location.

The AC models include 800 BTU AC units (not mounted) that keep equipment cool even with ambient temperatures up to 130° F.

Use the fan models in areas where you need protection from the elements, but temperature control is not an issue. Air filters on the bottom can be easily removed for cleaning without opening the cabinet. A pagoda-style fan top provides protection from falling liquids and debris.

On the double-hinged models, the cabinet swings away from a front or a rear door, enabling access to the rear of your equipment. In single-hinged models, only the front door opens.

Note: Wallmount models require a drain pipe.



RMW5110ACG-R2

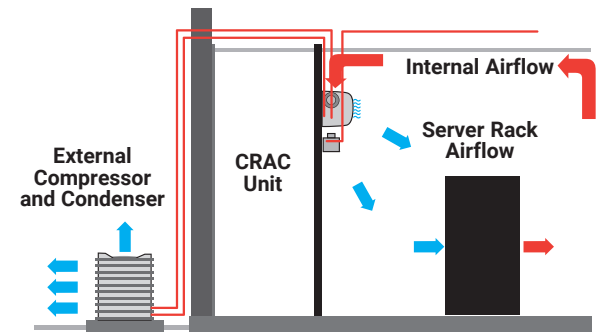
### What's included

- ClimateCab NEMA 12 Cabinet with 10/32 Rails
- 800 BTU AC unit or 200 CFM fan
- Hardware to mount the AC to the cabinet and Instructions

## HOW CLIMATE CAB WORKS

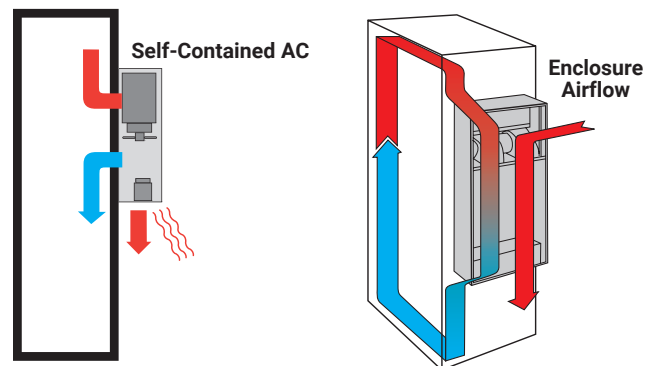
### Cooling without ClimateCab

- Compressor, air handler, and pump all require dedicated electrical circuits
- Piping and wiring installation can be disruptive
- Project can take weeks and require contractors
- Inefficient cooling wastes money



### Cooling with ClimateCab

- Put the cabinet where you want it and plug it in
- No need for piping, wiring, or a drain on freestanding models  
**Note:** Wallmount models require a drain.
- ClimateCab is efficient, self-contained cooling that doesn't waste your money cooling an entire room



**SELECTION GUIDE | WALLMOUNT CLIMATECAB**

SIZE	EXTERIOR HEIGHT	EXTERIOR WIDTH	EXTERIOR DEPTH	EQUIPMENT DEPTH	WEIGHT CAPACITY	WITH 800 BTU AIR CONDITIONING	WITH FAN	PART #
12U	24" (61 cm)	24" (61 cm)	24" (61 cm)	21.2" (53.8 cm)	100 lb. (45.4 kg)	Single-Hinged	—	RMW5130AC-R2
						Double-Hinged	—	RMW5110AC-R2
						Double-Hinged with Gland Plates	—	RMW5110ACG-R2
						—	Single-Hinged	RMW5120AF
						—	Double-Hinged	RMW5100AF

**SELECTION GUIDE | FREESTANDING CLIMATECAB**

SIZE	DEPTH (INCHES)	RAIL TYPE	POWER (V)	AC SIZE (BTU)	CODE
24U	31.5	M6	120	6000	CC24U6000M631
	40	M6	120	6000	CC24U6000M640
	31.5	M6	230	6000	CC24U6000M63123
	40	M6	230	6000	CC24U6000M64023
	31.5	M6	120	8000	CC24U8000M631-R3
	40	M6	120	8000	CC24U8000M640-R3
42U	42	M6	120	6000	CC42U6000M6
	31.5	Tapped	120	6000	CC42U6000T
	40	M6	230	6000	CC42U6000M6-230
	42	M6	120	8000	CC42U8000M6-R3
	31.5	Tapped	120	8000	CC42U8000T-R3
	40	M6	230	8000	CC42U8000M6-230-R3
	42	M6	120	12000	CC42U12000M6-R3
	31.5	Tapped	120	12000	CC42U12000T-R3
	40	M6	230	12000	CC42U12000M6-230-R3

