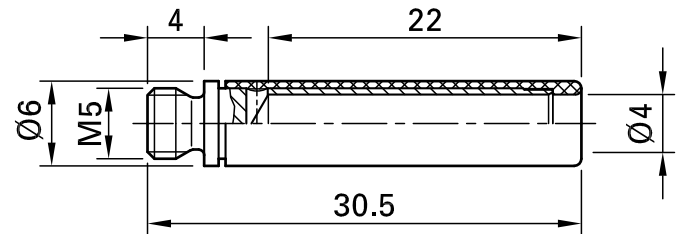


B4-E-M5-I



Item number 23.1034-*

Insulated screw-in adapter with M5 external thread for screw connection to threaded holes. Machined brass. Ø 4 mm rigid socket in insulator accepting spring-loaded Ø 4 mm plugs with rigid insulating sleeve. Socket with internal slot for screwdriver.

Technical data	
Diameter of plug system	4 mm
Rated Values	30 VAC, 32 A / 60 VDC, 32 A
Surface treatment electrical contact	Ni
Base material electrical contact	CuZn
Colours *	21 22 23 24
Thread	M5
Test accessory acc. to	IEC EN 61010-031
Material insulating part	PA