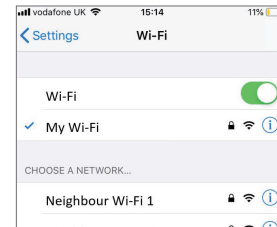


1. Connect to your WiFi network

Connect your phone to the WiFi network that you wish your WiFi Smart plug to use.



IMPORTANT On Android you may also need to temporarily disable mobile data while setting up your WiFi Smart Plug.

2. Download the Energenie MiHome app

Either:



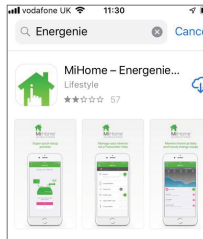
Scan this QR Code using your phone's camera

or

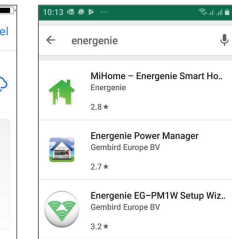


Visit the app store on your phone and search **Energenie**

The app will look like this in the iOS app store or the Google Play store:



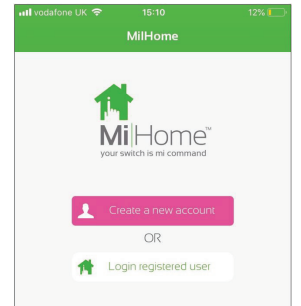
iOS



Android

Download it to your phone

3. Open the Energenie MiHome app



Open the app and create a new account, or log in to an existing account.

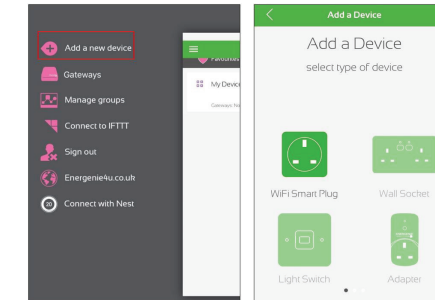
4. Start pairing your WiFi Smart Plug

If you are new to Energenie MiHome you will see this welcome screen:



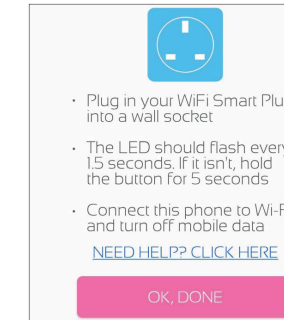
Select '**Setup WiFi Smart Adapter**'.

If you already have an account, choose '**Add a new device**' from the menu and select '**WiFi Smart Plug**'.



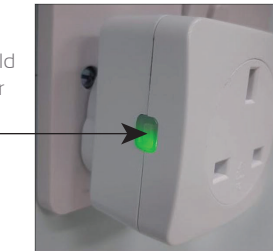
5. Follow the on-screen instructions

Following the on-screen instructions, you should plug your WiFi Smart Plug into a socket.



The green status LED should start flashing every 1½ seconds.

If it does not, press and hold the button for 5 seconds.



Then press the button on the app labelled '**OK done**'.

PTO →

6. Connect the WiFi Smart Plug to WiFi

Following the on-screen instructions to connect to the WiFi Smart Plug's own network.



Go to your phone's Wi-Fi settings and join the Wi-Fi network which begins with **Energenie...**

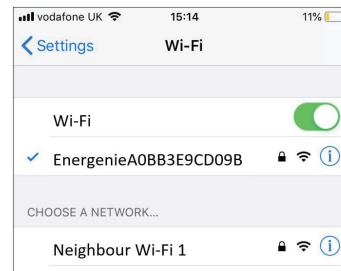
Then return to this screen.

[NEED HELP?? CLICK HERE](#)

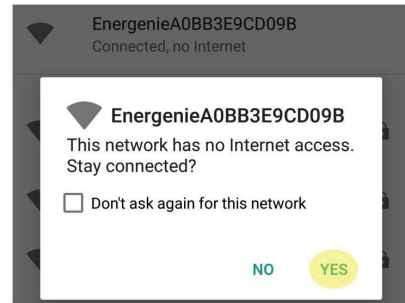
Navigate to your phone's Wi-Fi settings.
On Android you will see this button to help you:

GO TO WIFI SETTINGS

In your phone's settings, connect to the Wi-Fi network that starts with '**Energenie...**'



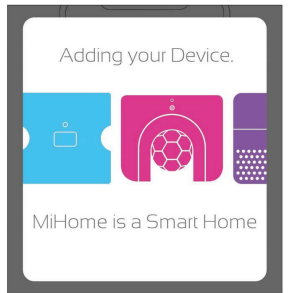
IMPORTANT On Android your phone may ask if you wish to stay connected.



If it does, choose '**Yes**'.

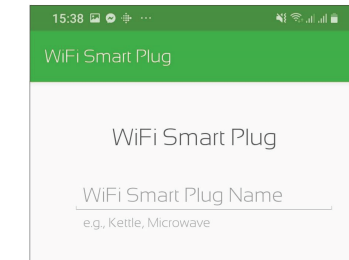
7. Return to the Energenie MiHome app

Return to the Energenie MiHome app. Pairing should start automatically. The green LED on the plug should stop flashing.



8. Name your new WiFi Smart Plug

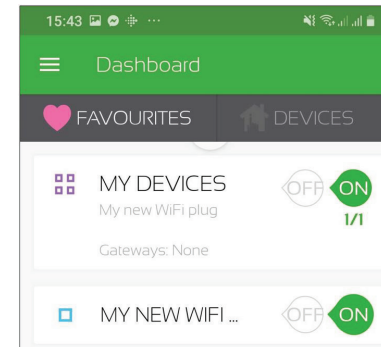
Give your plug a name and select '**Go To Dashboard**' to start controlling it.



Alternatively, select '**Add a New Device**' to pair another Energenie MiHome product.

9. Take control of your new Energenie MiHome Smart Plug!

Control your new plug from the dashboard using the **On** and **Off** buttons.



Further Help

If you need help, try our troubleshooting guide
mihome4u.co.uk/miho109-troubleshooting

You can find the full user manual on our website here:
energenie4u.co.uk/catalogue/product/MIHO109

Our technical support team can also help you.

Contact us here:
energenie4u.co.uk/about_us/contact_us

MiHome WiFi Smart Plug Quick Start Guide

