



IkaScope WS200 summary and safety notes

Ultra portable, one channel, 30 MHz, wireless oscilloscope.

www.ikalogic.com | support@ikalogic.com

August 12, 2019

Contents

Detailed device manual	3
Product description	4
Warning	5
WS200 interfaces	6
Getting started	6
Certifications and regulations	7
Safety information	8
Symbols definitions	8
General safety information	8
Lithium battery safety information	9
Limited warranty & limitation of liability	10
Document Revisions	11

Detailed device manual

This document only contains summary of the specifications and important safety information. Please refer to the full user manual for detailed device characteristics and most up to date information regarding the usage of this product.

Latest user manual can be found on www.ikalogic.com

We also encourage you to read the knowledge base section on our website.

Product description

IkaScope WS200 is an ultra portable oscilloscope probe. It weighs less than 60g and is designed to fit perfectly in your hand. With a Wifi connection to a smartphone, a tablet or a computer, signals can be displayed and measurements can be easily made. Patente pending ProbeClick® technology transforms the probe tip into an intelligent part of the oscilloscope: The probe detects when pressure is applied or released, allowing measurement to be automatically started and stopped without the need of traditional RUN/STOP button.

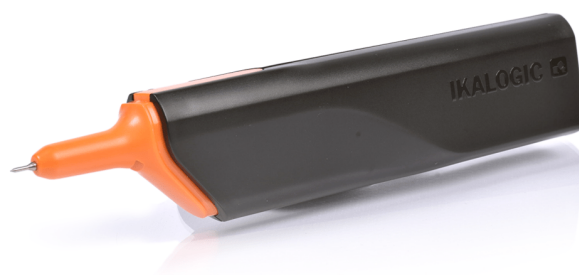


Figure 1: IkaScope WS200 ultra-portable oscilloscope

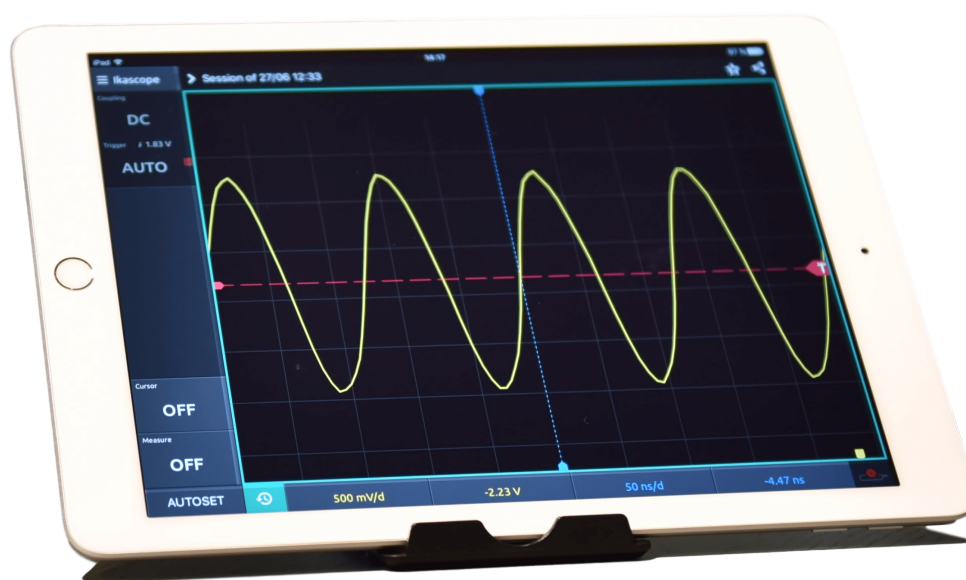


Figure 2: IkaScpoe software running on a tablet

Warning

Read **safety information** section carefully before using this instrument.

WS200 interfaces



Figure 3: IkaScope WS200 interfaces

1. Probe tip
2. Ground lead connection
3. Status LEDs and charging port
4. Battery status LED
5. Wifi status LED
6. USB (micro-B) charging port

Getting started

To use this device, please download and install the latest version of IkaScope software from www.ikalogic.com. Please download and read latest datasheet from website. Contact Ikalogic customer support (support@ikalogic.com) if you have any questions regarding the usage of this product.

Certifications and regulations



EMC : IEC NF/EN 61326-1 (In high perturbed RF environment, the displayed signal may be altered during perturbation with self recovering) and complies with Limit for class B digital device, pursuant to part 15 of the FCC rules.

IkaScope WS200 complies with the following regulations

- FCC (Part 15)
- CE
- ROHS
- REACH
- WEEE

IkaScope contains a lithium battery. Both the product and the battery were tested according to:

- PI965 AIR
- PI965 SEA
- PI967 AIR
- PI967 SEA
- UN38.3

IkaScope contains a Wifi module that complies with the following regulations

- CE1177
- FCC (USA)
- IC (Canada)
- GITEKI
- KCC

All test certificates can be provided upon request.

Safety information

Complies with safety standards IEC NF/EN 61010-1: 2010, IEC NF/EN 61010-2-030 and UL 61010-1: 2015
To prevent possible electrical shock, fire, personal injury, or damage to the product, read all safety information before you use the product.

Symbols definitions



Figure 4: Risk of Danger. Important information. See Manual.



Figure 5: WEEE logo. This product complies with the WEEE Directive (2002/96/EC) marking requirements. The affixed label indicates that you must not discard this electrical/electronic product in domestic household waste. Product Category: With reference to the equipment types in the WEEE Directive Annex I, this product is classed as category 9 Do not dispose of this product as unsorted municipal waste.



Figure 6: CE Logo. Conforms to European Union directives.

General safety information



Warning: To avoid electrical shock or fire:

- Carefully read all instructions.
- Use the product only as specified, otherwise the protection supplied by the product can be compromised.
- Do not use the product if it operates incorrectly.

- Before use, inspect device casing, probes, test leads and accessories for mechanical damage and replace if damaged.
- Never attempt to repair a defective device. Contact customer service.
- Do not use the product or its accessories in case of any damage.
- Disconnect all probes, test leads and accessories that are not in use.
- Never use the device for measuring mains circuits.
- Never use the device for measuring circuits which are not galvanically isolated from mains circuits.
- Do not touch electrical wires with bare hands.
- Keep away from children's sight or from animals.
- Do not expose to water, heat or moisture.
- Do not point probe tip toward body parts.
- Do not connect the ground lead to voltages higher than $\hat{A}\pm 40V$ from earth ground.
- The electrical isolation between the USB port and the measurement ports is NOT designed to isolate from mains circuit.
- Do not apply more than the rated voltage ($\hat{A}\pm 40V$), between the terminals or between each terminal and USB port ground.
- Do not apply input voltages above the rating of the instrument ($\hat{A}\pm 40V$).
- Measure a known voltage first to make sure that the product operates correctly.
- Do not work alone.
- Comply with local and national safety codes. Use personal protective equipment (approved rubber gloves, face protection, and flame resistant clothes) to prevent shock.
- Do not operate the product with covers removed or the case open. Hazardous voltage exposure is possible.
- Only recharge from a USB port.
- Do not use the device in wet or damp conditions, or around explosive gas or vapor.
- Do not use in a system in which the failure of the product might result in personal injury.

Lithium battery safety information

IkaScope WS200 contains a 420mAh lithium battery.



Warning To avoid electrical shock or fire:

- Never attempt to open an IkaScope WS200.
- Never attempt to replace the battery yourself. Contact customer service in case your battery needs replacement.

- Never recharge a device that shows signs of malfunctioning.
- Never recharge IkaScope WS200 for more than 3 hours (disconnect the USB cable from USB port)
- Only use the USB cable provided by Ikalogic to recharge the device.
- Only connect the USB cable to a USB compliant port.
- Never recharge the device with a defective USB cable or charger.
- Do not store the device uncharged for long periods of time.
- Do not expose the device to temperatures beyond the range of 10°C to 40°C.
- Keep the device away from heat sources and direct sunlight.
- Do not subject device to impacts such as mechanical shocks or perforation.
- In case of accidental opening of the device, do not recharge or use the device and contact customer support.
- Never short-circuit the battery.
- Never overcharge the battery.
- The battery contains dangerous chemical components, that can cause burns or explode. In case of exposure to those chemical products, clean with water and get medical assistance immediately.
- Do not dispose of the battery as unsorted municipal waste.
- A failed battery pack should be disposed of in accordance with local regulations.

Limited warranty & limitation of liability

Each Ikalogic product is warranted to be free from defects in material and workmanship under normal use and service. The warranty period is three years for the test tool and two year for its accessories. This warranty extends only to the original buyer or end-user customer of an Ikalogic authorized reseller, and does not apply to fuses, disposable batteries or to any product which, in Ikalogic's opinion, has been misused, altered, neglected or damaged by accident or abnormal conditions of operation or handling.

THIS WARRANTY IS BUYER'S SOLE AND EXCLUSIVE REMEDY AND IS IN LIEU OF ALL OTHER WARRANTIES, EXPRESS OR IMPLIED, INCLUDING BUT NOT LIMITED TO ANY IMPLIED WARRANTY OF MERCHANTABILITY OR FITNESS FOR A PARTICULAR PURPOSE. IKALOGIC SHALL NOT BE LIABLE FOR ANY SPECIAL, INDIRECT, INCIDENTAL OR CONSEQUENTIAL DAMAGES OR LOSSES, INCLUDING LOSS OF DATA, WHETHER ARISING FROM BREACH OF WARRANTY OR BASED ON CONTRACT, TORT, RELIANCE OR ANY OTHER THEORY. Since some countries or states do not allow limitation of the term of an implied warranty, or exclusion or limitation of incidental or consequential damages, the limitations and exclusions of this warranty may not apply to every buyer. If any provision of this Warranty is held invalid or unenforceable by a court of competent jurisdiction, such holding will not affect the validity or enforceability of any other provision.

Document Revisions

30-July-2019	Updated safety information section Removed redundant information that is found in user manual Added Limited warranty & limitation of liability section
01-August-2017	Initial release of this document.

The information in this document is subject to change without notice.