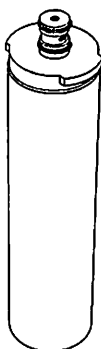


## You Should Have These Parts With Your Filter

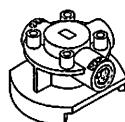
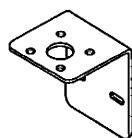


Double Sided Tape

Cartridge



Mounting Bracket



Head Assembly



Bracket Attachment Screws (4)

Model No.	Connection Size	Dimensions		Max. Flow Rate	Chlorine Reduction Capacity	Water Temp.	Water Pressure	Replacement Ctg. No.	Replacement Ctg. Qty.
		Height	Width						
CS-451	1/4" NPT	9.5 in (24.1 cm)	2.5 in (6.4 cm)	0.5 gpm (1.9 lpm)	1,500 gals (5,678 L)	40-100° F (4.4-38° C)	25-125 psi (172-862 kPa)	CS-51	1
CS-452	1/4" NPT	9.5 in (24.1 cm)	2.5 in (6.4 cm)	0.5 gpm (1.9 lpm)	1,500 gals (5,678 L)	40-100° F (4.4-38° C)	25-125 psi (172-862 kPa)	CS-52	1
CS-453	1/48" NPT	9.5 in (24.1 cm)	2.5 in (6.4 cm)	0.5 gpm (1.9 lpm)	N/A	40-100° F (4.4-38° C)	25-125 psi (172-862 kPa)	CS-53	1

### Limited Warranty

3M Purification Inc. warrants CS400 Series Water Filtration Systems only to be free from defects in material and workmanship for two (2) years from the date of purchase. The disposable filter cartridge is warranted from defects in material and workmanship for a period of one (1) year from the date of purchase. This warranty does not cover failures resulting from abuse, misuse, alterations or damage not caused by 3M Purification Inc. or failure to follow installation and use instructions. No warranty is given as to the service life of any filter cartridge or membrane as it will vary with local water conditions and consumption. **3M PURIFICATION INC. MAKES NO OTHER WARRANTIES OR CONDITIONS, EXPRESS OR IMPLIED, INCLUDING, BUT NOT LIMITED TO, ANY IMPLIED WARRANTY OR CONDITION OF MERCHANTABILITY OR FITNESS FOR A PARTICULAR PURPOSE OR ANY IMPLIED WARRANTY OR CONDITION ARISING OUT OF A COURSE OF DEALING, CUSTOMER OR USAGE OF TRADE.** If the Product fails to satisfy this Limited Warranty during the warranty period, 3M Purification Inc., at its option, will replace the Product or refund your Product purchase price. This warranty does not cover labor. The remedy stated in this paragraph is Customer's sole remedy and 3M Purification Inc.'s exclusive obligation.

This warranty gives you specific legal rights, and you may have other rights which may vary from state to state, or country to country. For any warranty questions, please call 866.990.9785 or mail your request to: Warranty Claims, 3M Purification Inc., 400 Research Parkway, Meriden, CT 06450. Proof of purchase (original sales receipt) must accompany the warranty claim, along with a complete description of the Product, model number and alleged defect.

**Limitation of Liability:** 3M Purification Inc. will not be liable for any loss or damage arising from this 3M Purification Inc. product, whether direct, indirect, special, incidental, or consequential, regardless of the legal theory asserted, including warranty, contract, negligence or strict liability. Some states and countries do not allow the exclusion or limitation of incidental or consequential damages, so the above limitation or exclusion may not apply to you.

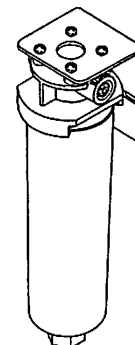


3M Purification Inc.  
400 Research Parkway  
Meriden, CT 06450, USA  
Toll Free: 866.990.9785  
Worldwide: 203.237.5541  
Fax: 203.238.8701  
www.3Mfoodservice.com  
www.3Mpurification.com

3M is a trademark of 3M Company.  
© 2012 3M Company. All rights reserved.  
INSTRCS400 0912B  
Please recycle. Printed in U.S.A.

## 3M™ Water Filtration Products

### CS-400 Series Water Filtration Systems Installation and Instruction Manual



Read, understand, and follow all safety information contained in these instructions prior to installation and use of the 3M Model CS-400 Series. Retain these instructions for future reference.

#### Intended use:

The 3M Model CS-400 series is intended for use in filtering potable water for food service equipment and has not been evaluated for other uses. The system is intended for indoor installations and must be installed by qualified professional installer according to these installation instructions.

#### EXPLANATION OF SIGNAL WORD CONSEQUENCES

<b>⚠ WARNING</b>	Indicates a potentially hazardous situation, which, if not avoided, could result in death or serious injury and/or property damage.
<b>CAUTION</b>	Indicates a potentially hazardous situation, which, if not avoided, may result in property damage.

#### ⚠ WARNING

To reduce the risk associated with ingestion of contaminants.

- Do not use with water that is microbiologically unsafe or of unknown quality without adequate disinfection before or after the system.

#### CAUTION

To reduce the risk associated with property damage due to water leakage:

- Protect filter from freezing. Drain filter when room temperature drops below 40° F (4.4° C);
- Do not install if water pressure exceeds 120 psi (827 kPa). If your water pressure exceeds 120 psi (827 kPa) you must install a pressure limiting valve. Contact a plumbing professional if you are uncertain how to check your water pressure;
- Do not install on hot water supply lines. Install on cold water lines only. Installed on cold water lines only, maximum temperature 100° F (37.8° C);
- Do not install where water hammer conditions may occur. If water hammer conditions exist, you must install a water hammer arrester. Contact a plumbing professional if you are uncertain how to check for this condition;
- Do not install on hot water supply lines. The maximum operating water temperature of this system is 100° F (37.7° C)
- Read and follow use instructions before installation and use of this system;
- The disposable filter cartridge must be replaced every six months or at the specified service cycle.
- Read and follow Use Instructions before installation and use of this system.

#### IMPORTANT

- Failure to follow instructions may void warranty;
- Allow minimum of 2 in (5.1 cm) clear space under [the assembly] to facilitate cartridge changes;
- Install with the inlet and outlet ports as labeled. Make sure not to reverse connections.
- Do not use acid base sealers or wicking on plastic filter head.
- Do not use torches or other heat sources near plastic plumbing, as damage may occur;
- Take care when using pliers or pipe wrenches to tighten plastic fittings, as damage may occur;
- On plastic fittings, use thread sealing tape only. Never use pipe sealant or pipe dope on plastic fittings, as damage may occur;
- Do not install this system in direct sunlight.

Installer: Please leave this manual with owner/operator.

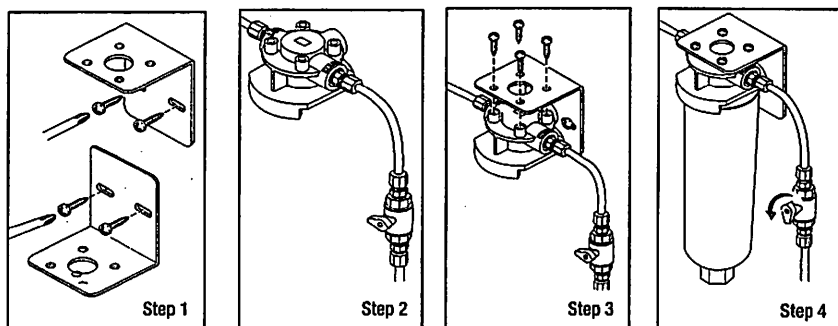
End User: Please retain for operation and future maintenance instructions.



## 3M™ Water Filtration Products

### Procedure for Installing CS-400 Series Water Filtration Systems

Before starting, close shut-off valve on cold water line.



#### ⚠ WARNING

To reduce the risk associated with hazardous voltage:

- Do not install near electric wiring or piping which may be in path of a drilling tool when selecting the position to mount the filter bracket.

#### IMPORTANT NOTES

- Note adjacent equipment which may interfere with system fastening screws.

**Step 1.** The Mounting Bracket may be installed with the back of the bracket in the up or down position. Screws may be used to attach the bracket to the desired surface or the Industrial double-sided tape strip can be cut in half and used to mount the bracket. (Be sure that both the surface of the bracket and the mounting surface are clean. Be sure to allow at least 2" (5 cm) of clearance below the unit.)

**Step 2.** The filter must be installed with inlet and outlet ports as labeled. Make sure not to reverse the connections. **IMPORTANT:** ON TOP OF THE FILTER HEAD you will see the numbers 1, 2, and 3 molded into the plastic head.

Port 3 is labeled Inlet.

Port 1 is labeled outlet.

Port 2 is not an option and is not threaded for fittings

The shut off valve should be located in line somewhere between the incoming water line and the inlet fitting.

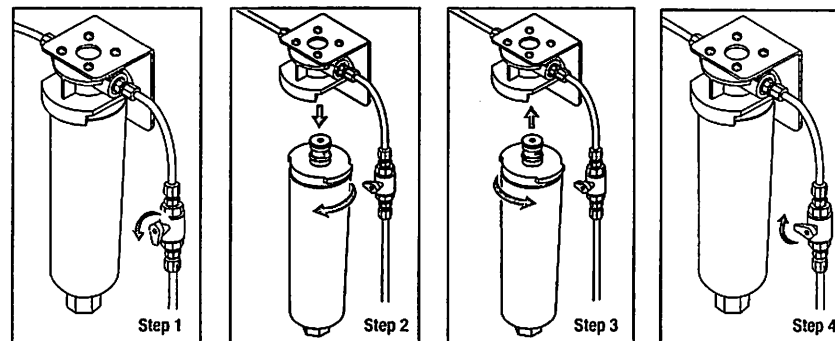
**Step 3.** Attach the head to the bracket with the screws provided. All four screws can be used, or two can be used to mount the bracket to the desired surface.

**Step 4.** Install cartridge, (see Cartridge Change instructions on next page and follow Steps 3 and 4) and make any required connections. Pressurize the system and check for leaks. Flush system in accordance with Performance Data Sheet. Water may run cloudy but will quickly clear.

## 3M™ Water Filtration Products

### Replacement Cartridge Change Instructions

**CAUTION:** The disposable filter cartridge must be replaced every six months or sooner if there is a decrease in water pressure. Always have spare cartridges on hand.



**Step 1.** Close shut off valves before (inlet) and after (outlet) filter head. Depressurize filter.

**Step 2.** Grasp head and cartridge securely, and turn used cartridge slowly to the left. If water line has not been properly depressurized, a small discharge of water may occur. Gently pull cartridge straight out and discard.

**Step 3.** Align tabs of new cartridge with head and insert new cartridge into head. Turn cartridge to the right until the filter stops.

**Step 4.** Place the inlet shutoff valves in regular working position. Due to air and carbon fines water may initially run cloudy but will clear. Flush system in accordance with Performance Data Sheet.