

Part number

CX 8 J6IM



Brief description:

RJ45 male connector, IDC terminal, with 8 data contacts

Product description		Approvals / Standards	
Model	male insert	Conformity	Not applicable
Series	for CX 01 J8IM insert	General ordering information	
Product type	8 data contacts	EAN13 code	8015747206211
Family	MIXO series, customizable inserts	Tariff number	85369095
Technical data		Packaging information	
Operating temperature range (min, max)	-40°C ... +125°C	Sub-packaging description	Plastic bag
Further technical details		Sub-packaging quantity	1 Pcs
Characteristics according to EN 61984	1A 50V 0,8kV 3	Sub-packaging EAN barcode	8015747206389
Insulation resistance	≥ 10 GΩ		
Rated voltage according to UL/CSA	600V		
Weight	8,60 g		

Part number

CX 01 J8IM



Brief description:

male insert, housing for RJ45 connectors, for 1 RJ45 IDC connector, part number CX 8 J6IM, 1 module, modular units series MIXO

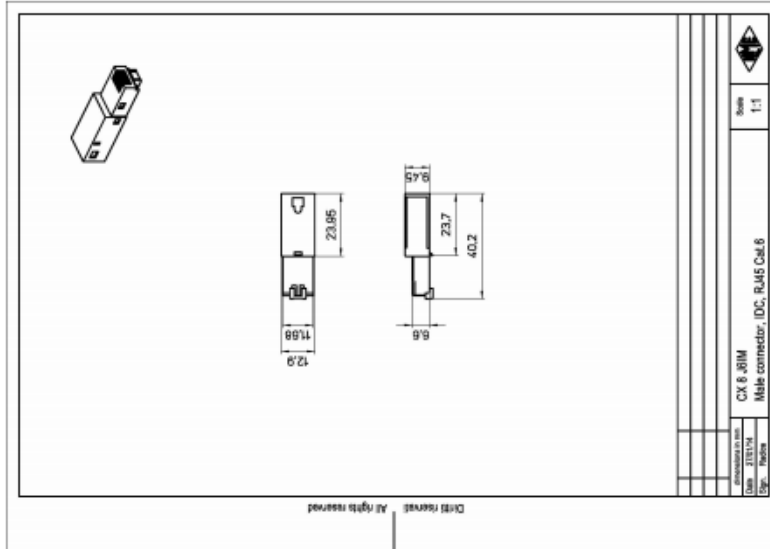
Product description		Approvals / Standards	
Model	male insert	Quality mark	EAC
Version	housing for RJ45 connectors for 1 RJ45 IDC connector, part number CX 8 J6IM	Conformity	Not applicable
Product type		General ordering information	
Family	MIXO series, customizable inserts	EAN13 code	8015747206198
Size	1 module	Tariff number	85369095
Technical data		Packaging information	
Operating temperature range (min, max)	-40°C ... +70°C	Sub-packaging description	Plastic bag
IP degree of protection	IP20 without enclosure, IP65/IP66/IP68/IP69 with enclosure	Sub-packaging quantity	1 Pcs
Further technical details		Sub-packaging EAN barcode	8015747206365
Characteristics according to EN 61984	1A 50V 0,8kV 3		
Insulation resistance	≥ 10 GΩ		
Rated voltage according to UL/CSA	50V		
UL 94 flammability rating	V-0		
Weight	10,00 g		

Part number

CX 8 J6IM



Catalogue drawings

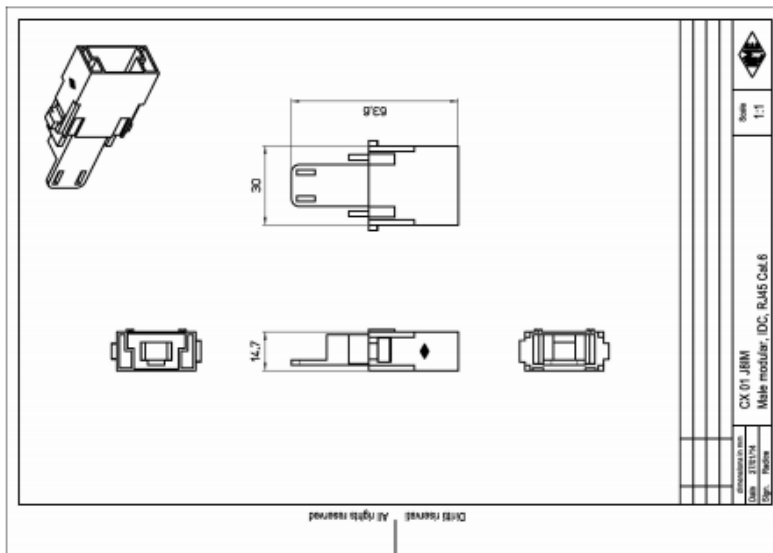


Part number

CX 01 J8IM



Catalogue drawings



Notes

the modular inserts must be installed in suitable frames which in turn are installed in traditional housings or COB panel support