



Body Voltage Meter Installation, Operation and Maintenance



Figure 1. Desco 19431 Body Voltage Meter

Description

The Desco [19431](#) Body Voltage Meter is a portable measuring system that allows analysis of charge levels accumulated on the human body according to ANSI/ESD STM97.2. It is fully portable and does not require a PC for data acquisition as all data is measured and logged using internal memory. The operator can perform all necessary tests without another user, and while walking the instrument is attached only with a single cable to a fixed position for reference to ground. Graphs of tests can be displayed on the LCD display for quick evaluation. They can also be exported and analysed on a PC for professional record-keeping.

Each Body Voltage Meter is calibrated with accepted procedures and standards traceable to the National Institute of Standards and Technology (NIST) and includes a NIST certificate.

“A compliance verification plan shall be established to ensure the organization’s fulfilment of the requirements of the plan. Process monitoring (measurements) shall be conducted in accordance with a compliance verification plan that identifies the technical requirements to be verified, the measurement limits and the frequency at which those verifications shall occur. The compliance verification plan shall document the test methods used for process monitoring and measurements. If the organization uses different test methods to replace those of this standard, the organization shall be able to show that the results achieved correlate with the referenced standards. Where test methods are devised for testing items not covered in this standard, these shall be adequately documented including corresponding test limits. Compliance verification records shall be established and maintained to provide evidence of conformity to the technical requirements. The test equipment selected shall be capable of making the measurements defined in the compliance verification plan.” (EN 61340-5-1 clause 5.2.4)

Packaging

- 1 Body Voltage Meter
- 1 Walking Test Probe
- 1 Black 8-Pin DIN to USB Cable, 1.8 m long
- 1 Black Ground Cord with Crocodile Clip, 5 m long
- 1 Lanyard with Hook
- 1 Certificate of Calibration

Features and Components



Figure 2. Body Voltage Meter features and components

- A. Settings Button:** Press to enter SETTINGS mode.
- B. Left and Right Buttons:** Press to cycle through the menus.
- C. Cursor Button:** Press to advance the cursor.
- D. Exit Button:** Press to power the meter ON and OFF. This button is also used to exit SETTINGS and MENU modes.
- E. Start / Stop Button:** Press to start and stop a measurement. This button is also used to increase the value of settings when in SETTINGS mode.
- F. Ground Jack:** Common point ground for the meter. Connect the included black ground cord here.
- G. Probe / PC Connector:** Connect the included test probe when taking measurements. Connect the included DIN to USB cable when exporting data onto a PC.
- H. Ground Jack:** Common point ground for the meter. Connect the included black ground cord here.
- I. Ground Touch Plate:** Touch to ground the operator prior to taking body voltage measurements.

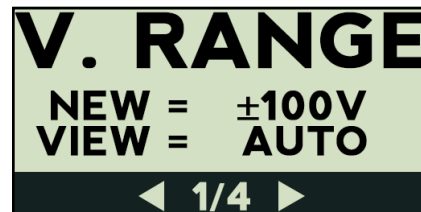
Settings Mode

Press and hold the Settings button for 1 second to enter the SETTINGS mode. There are 4 menus available:

1. V RANGE
2. CLOCK
3. DISPLAY
4. °C/°F

Press the Left button to move to the previous menu. Press the Right button to move to the next menu. Press the Exit button to exit from SETTINGS mode.

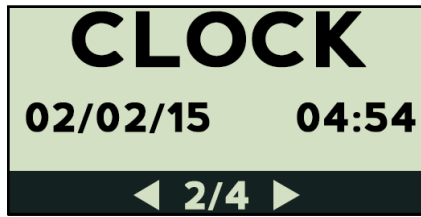
V. Range Menu



Adjust the voltage range for new and saved graphs. Press the Cursor button to advance the cursor, and press the Start / Stop button to increase the value.

NOTE: AUTO range is only available for saved graphs.

Clock Menu



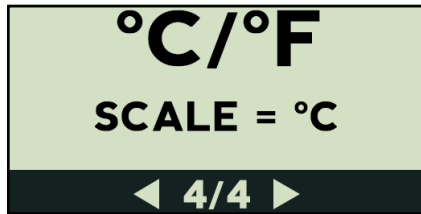
Adjust the date and time settings. Press the Cursor button to advance the cursor, and press the Start / Stop button to increase the value.

Display Menu



Adjust the contrast of the LCD display (0 to 9). The default contrast setting is 5. Press the Start / Stop button to increase the value.

°C/°F Menu



Choose Celsius (° C) or Fahrenheit (° F) for the temperature unit of measurement. Press the Start / Stop button to toggle the setting.

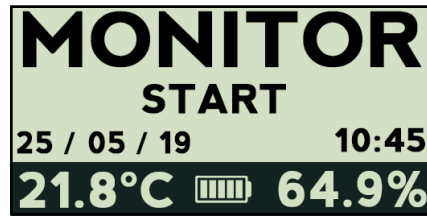
Operation Modes

There are 6 operation modes available:

1. MONITOR
2. ZERO
3. NEW
4. VIEW
5. CLEAR
6. COM

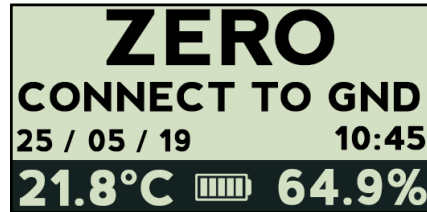
Press the Left button to move to the previous mode.
Press the Right button to move to the next mode.
Press the Start / Stop button to enter the selected mode.
Press the Exit button to exit the selected mode.

Monitor Mode



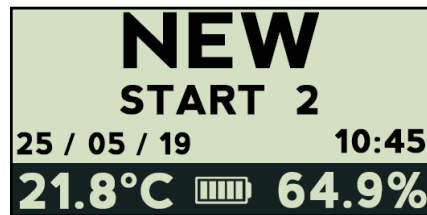
Allows on-the-go measurements without saving any data.

Zero Mode



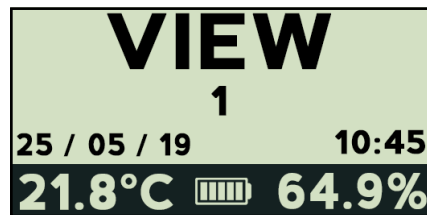
Zeros out the Body Voltage Meter.

New Mode



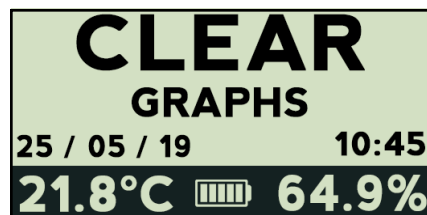
Records new graph.

View Mode



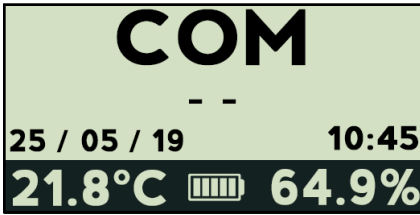
Views saved graphs.

Clear Mode



Deletes last or all saved graphs.

COM Mode



Exports data to PC using supplied 8-Pin DIN to USB cable.

Installation



Figure 3. Setup of the Body Voltage Meter

1. Remove the meter from the carton.
2. Connect the included ground cord to one of the two ground jacks located at the top of the meter. Connect the opposite end of the ground cord to equipment ground.
3. Connect the test probe to the probe connector located at the top of the meter.
4. Press the EXIT button to power the meter.
5. NOTE: The electronic components of the electrostatic sensor require a warm-up period of 5 minutes to obtain accurate and stable measurements. An exclamation mark symbol on the display and an audible sound will alert the operator once warm-up has been completed.



6. The meter is now ready for use.

Operation

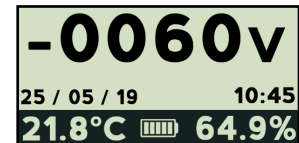
Using the Meter

1. Press the EXIT button to power the meter.
2. Hold the test probe and momentarily touch the ground touch plate located on the back of the unit.



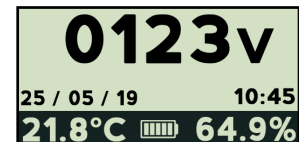
Figure 4. Momentarily touching the ground touch plate to ground the operator

3. Verify the Body Voltage Meter is zeroed by toggling to the MONITOR menu and reading the measured value. It should be 0 V. Zero the Meter if required by toggling to the ZERO menu.



Monitor Mode

1. Toggle to MONITOR mode on the meter, and press the Start / Stop button.
2. The display will show the electrical potential present on the probe.



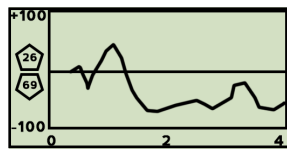
3. A beeping sound (every second) indicates that the meter is measuring. This is to ensure the unit is not left in measuring mode unintentionally and cause the battery to drain.
4. To stop the measuring process, press the Start / Stop or Exit buttons.



Figure 5. Using the Body Voltage Monitor

Datalogger Mode

1. Toggle to NEW mode on the meter and press the Start / Stop button.
2. After a 3 second count-down, the Body Voltage Monitor will log a graph of the walking test.
3. The graph will show the positive and negative peak voltages measured during the test.



4. To stop the test, press the Start / Stop button.
5. Press the Left or Right buttons to scroll through the graph for quick evaluation.
6. Press the Start / Stop button again to save or discard the graph. Press Start / Stop button to save or the Cursor button and Start / Stop button to discard the graph.

Downloading Data to a PC

1. Download and install the [WT Manager software](#).
2. Connect the Body Voltage Meter to a PC using the included Black 8-Pin DIN to USB Cable.
3. Toggle to COM mode on the meter.
4. Run the WT Manager software and select the appropriate port from the drop-down menu.

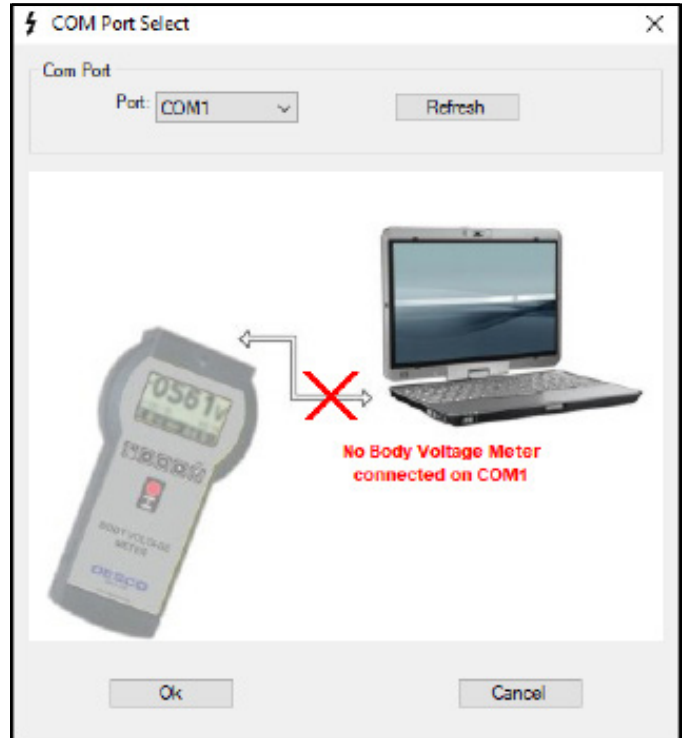


Figure 6. Selecting a COM port using the WT Manager software

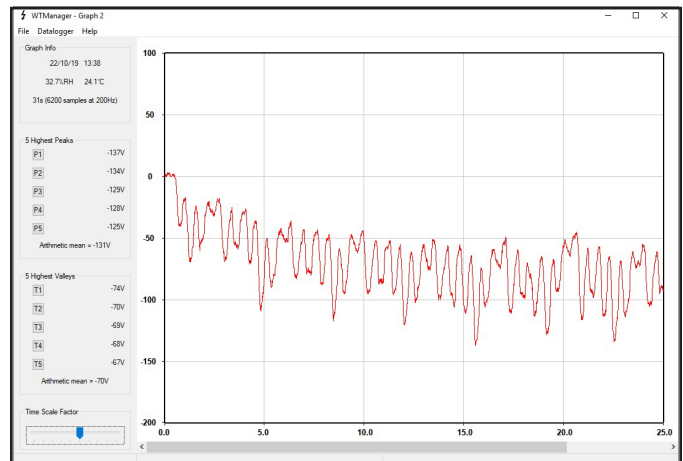


Figure 7. Viewing the body voltage of an ungrounded operator in the WT Manager software

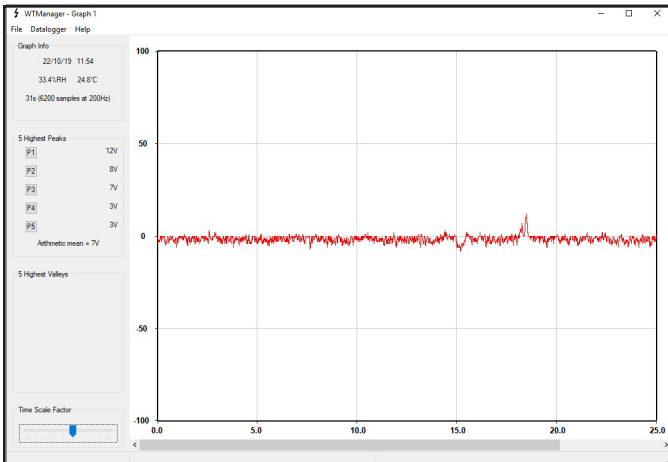


Figure 8. Viewing the body voltage of a grounded operator in the WT Manager software

Maintenance

Battery Replacement

Replace the batteries if the battery indicator on the Body Voltage Meter begins blinking. Open the battery cover, replace the 6 alkaline batteries, and close the battery compartment.



Figure 9. Replacing the Batteries on the Body Voltage Meter

Specifications

Voltage Range	±1050 V
Accuracy	±5 V
Resolution	1 V
Input Resistance	10 ¹⁴ ohms
Power Supply	6 AA alkaline batteries
Battery Auto-Shut Off Timer	10 minutes
Display	Graphic LCD 128 x 64 pixel, 68 mm x 51 mm
Memory Capacity	10 graphs
Sample Rate	200 Hz
Max Total Graphs Duration	2 minutes and 30 seconds
PC Interface	USB
Operating Temperature	41 °F to 85 °F (5 °C to 30 °C)
Environmental Requirements	Indoor use only at altitudes less than 6500 ft. (2 km) Maximum relative humidity of 80 % up to 85 °F (30 °C)
Dimensions (meter)	9.6" x 5.1" x 2.4" (243 mm x 130 mm x 60 mm)
Dimensions (probe)	Ø 1.4" x 5.1" (Ø35 mm x 130 mm)
Weight (meter with batteries)	1.4 lbs (650 g)
Weight (probe)	0.6 lbs (250 g)
Country of Origin	Italy

Limited Warranty, Warranty Exclusions, Limit of Liability and RMA Request Instructions

See the Desco Warranty -

[Desco.com/Limited-Warranty.aspx](https://www.desco.com/Limited-Warranty.aspx)