

84 series round edge cases

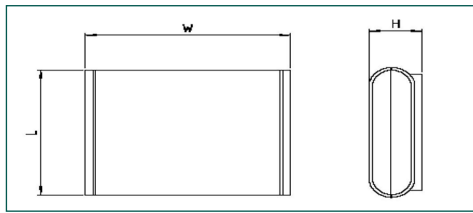
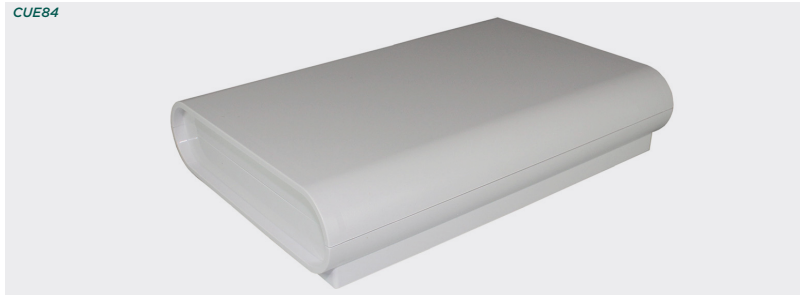
TAKACHI

Product overview

ABS round shaped case, suitable for wall mounting, home energy systems and home automation.

- Snap-fit enclosures - no screws required
- Surface mount knockout option
- Available in two sizes
- Internal pillars for PCB mounting
- Applications in home energy, home automation and control units
- 84 series has been designed to meet the requirements of IP40

CUE84



SPECIFICATION

Materials	ABS as standard UL94-HB
Operating temperature	-10°C to +60°C
Standard colours	White
Protection class	84 series has been designed to meet the requirements of IP40
Standard unit includes	Base and lid

CB WHITE	DARK GREY	LENGTH	WIDTH	HEIGHT
CDT8401WH	N/A	110mm	140mm	35mm
CDT8402WH	CDT8402DG	125mm	180mm	35mm

KEY FEATURES

Snap-fit enclosure | Available in two sizes | Wall mounting

