

TECHNICAL DATA SHEET

PRO-ELEC

**RoHS
Compliant**

T8 LED Tube Model PEL01795 - PEL01797

Replace tubes specifications	T8 18W
Rated input voltage	AC176-265V 50/60Hz
Rated power current	105mA(MAX)
Rated power input	9W (+/-1W)
PF	>0.5
Voltage	135V
Power	65mA
CCT	3000K/4000K/6500K
CRI	>80
LM	855lm±10%
System efficacy	95lm/w
Lumen maintenance	3000H@96% 6000H@92%
LED Brand	SANAN
LED model	2835
LED qty	45PCS (45S1P)
Lamp holder model	G13
The lamp body light transmittance	90%
Beam angle	>160°
Material	GLASS+PET cover
Carton box size (including packaging)	715×185×185mm 25PCS
G.W/CTN	4.3KGS
Lifetime	30000H
IP Level	IP20
Warranty	3years
Operating ambient temperature	-20°C~45°C
Operating ambient humidity	≤80%RH
Storage temperature and humidity	20°C~65°C@≤95%RH
Certificate	CE

Important Notice : This data sheet and its contents (the "Information") belong to pro-ELEC. No licence is granted for the use of it other than for information purposes in connection with the products to which it relates. No licence of any intellectual property rights is granted. The Information is subject to change without notice and replaces all data sheets previously supplied. The Information supplied is believed to be accurate but pro-ELEC assumes no responsibility for its accuracy or completeness, any error in or omission from it or for any use made of it. Users of this data sheet should check for themselves the Information and the suitability of the products for their purpose and not make any assumptions based on information included or omitted. Liability for loss or damage resulting from any reliance on the Information or use of it (including liability resulting from negligence or where pro-ELEC was aware of the possibility of such loss or damage arising) is excluded. This will not operate to limit or restrict pro-ELEC's liability for death or personal injury resulting from its negligence.

PRO-ELEC

TECHNICAL DATA SHEET

PRO-ELEC

**RoHS
Compliant**

T8 LED Tube Model PEL01588 - PEL01590

Replace tubes specifications	T8 18W
Rated input voltage	AC176-265V 50/60Hz
Rated power current	105mA(MAX)
Rated power input	9W (+/-1W)
PF	>0.5
Voltage	135V
Power	65mA
CCT	3000K/4000K/6500K
CRI	>80
LM	855lm±10%
System efficacy	95lm/w
Lumen maintenance	3000H@96% 6000H@92%
LED Brand	SANAN
LED model	2835
LED qty	45PCS (45S1P)
Lamp holder model	G13
The lamp body light transmittance	90%
Beam angle	>160°
Material	GLASS+PET cover
Carton box size (including packaging)	715×185×185mm 25PCS
G.W/CTN	4.3KGS
Lifetime	30000H
IP Level	IP20
Warranty	3years
Operating ambient temperature	-20°C~45°C
Operating ambient humidity	≤80%RH
Storage temperature and humidity	20°C~65°C@≤95%RH
Certificate	CE

Important Notice : This data sheet and its contents (the "Information") belong to pro-ELEC. No licence is granted for the use of it other than for information purposes in connection with the products to which it relates. No licence of any intellectual property rights is granted. The Information is subject to change without notice and replaces all data sheets previously supplied. The Information supplied is believed to be accurate but pro-ELEC assumes no responsibility for its accuracy or completeness, any error in or omission from it or for any use made of it. Users of this data sheet should check for themselves the Information and the suitability of the products for their purpose and not make any assumptions based on information included or omitted. Liability for loss or damage resulting from any reliance on the Information or use of it (including liability resulting from negligence or where pro-ELEC was aware of the possibility of such loss or damage arising) is excluded. This will not operate to limit or restrict pro-ELEC's liability for death or personal injury resulting from its negligence.

PRO-ELEC

TECHNICAL DATA SHEET

PRO-ELEC

**RoHS
Compliant**

T8 LED Tube Model PEL01591 - PEL01593

Replace tubes specifications	T8 58W
Rated input voltage	AC176-265V 50/60Hz
Rated power current	280mA(MAX)
Rated power input	24W (+/-2.4W)
PF	>0.5
Voltage	120V
Power	190mA
CCT	3000K/4000K/6500K
CRI	>80
LM	2300 lm±10%
System efficacy	95lm/w
Lumen maintenance	3000H@96% 6000H@92%
LED Brand	SANAN
LED model	2835
LED qty	120PCS (40S3P)
Lamp holder model	G13
The lamp body light transmittance	90%
Beam angle	>160°
Material	GLASS+PET cover
Carton box size (including packaging)	1625×185×185mm 25pcs
G.W/CTN	9.6KGS
Lifetime	30000H
IP Level	IP20
Warranty	3years
Operating ambient temperature	-20°C~45°C
Operating ambient humidity	≤80%RH
Storage temperature and humidity	20°C~65°C@≤95%RH
Certificate	CE

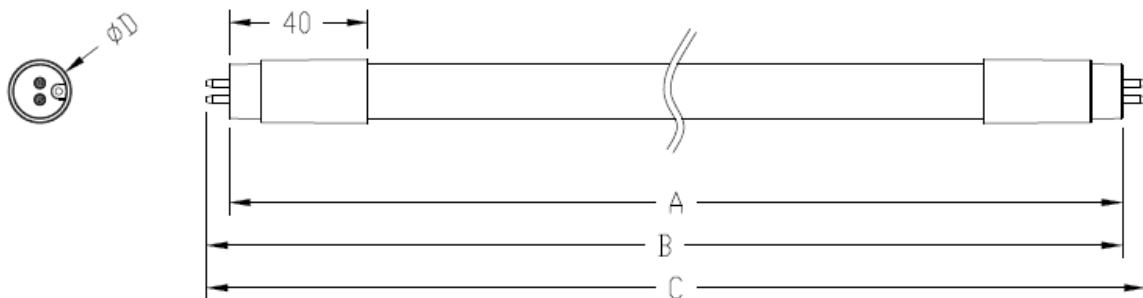
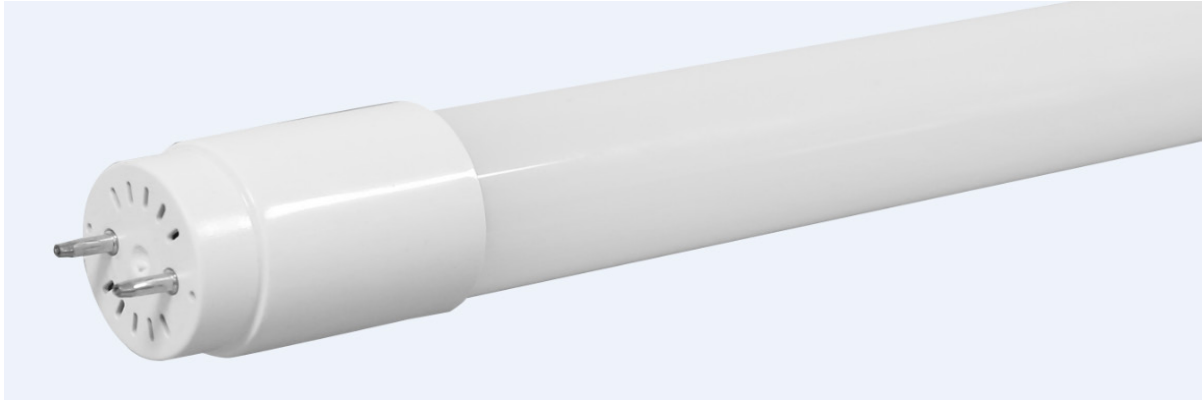
Important Notice : This data sheet and its contents (the "Information") belong to pro-ELEC. No licence is granted for the use of it other than for information purposes in connection with the products to which it relates. No licence of any intellectual property rights is granted. The Information is subject to change without notice and replaces all data sheets previously supplied. The Information supplied is believed to be accurate but pro-ELEC assumes no responsibility for its accuracy or completeness, any error in or omission from it or for any use made of it. Users of this data sheet should check for themselves the Information and the suitability of the products for their purpose and not make any assumptions based on information included or omitted. Liability for loss or damage resulting from any reliance on the Information or use of it (including liability resulting from negligence or where pro-ELEC was aware of the possibility of such loss or damage arising) is excluded. This will not operate to limit or restrict pro-ELEC's liability for death or personal injury resulting from its negligence.

PRO-ELEC

TECHNICAL DATA SHEET

PRO-ELEC

**RoHS
Compliant**



Model	Cap	Size (mm)	A	B	C	D
			Max	Max	Max	Max
PEL01795-797-1.5M	G13	26×1500	1500	1506.5	1513.6	26
PEL01588-590-1.2M	G13	26×1200	1199.4	1206.5	1213.6	26
PEL01591-593-0.6M	G13	26×1200	589.8	596.9	604	26

Important Notice : This data sheet and its contents (the "Information") belong to pro-ELEC. No licence is granted for the use of it other than for information purposes in connection with the products to which it relates. No licence of any intellectual property rights is granted. The Information is subject to change without notice and replaces all data sheets previously supplied. The Information supplied is believed to be accurate but pro-ELEC assumes no responsibility for its accuracy or completeness, any error in or omission from it or for any use made of it. Users of this data sheet should check for themselves the Information and the suitability of the products for their purpose and not make any assumptions based on information included or omitted. Liability for loss or damage resulting from any reliance on the Information or use of it (including liability resulting from negligence or where pro-ELEC was aware of the possibility of such loss or damage arising) is excluded. This will not operate to limit or restrict pro-ELEC's liability for death or personal injury resulting from its negligence.

PRO-ELEC