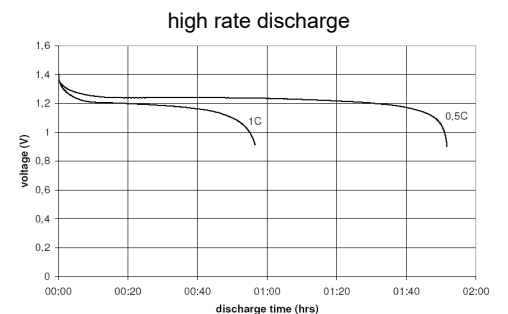
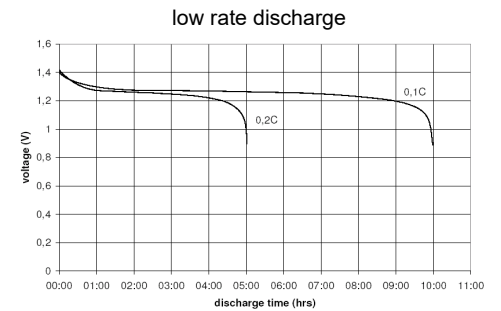
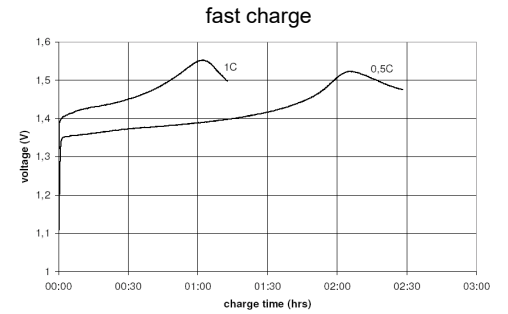
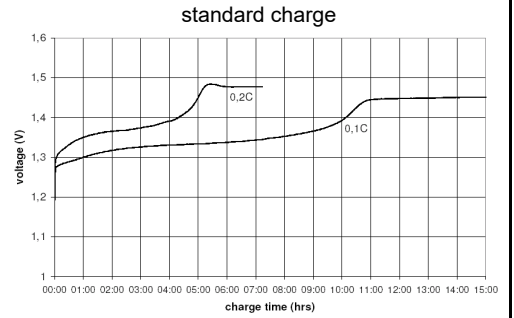


		Conditions	
<b>cell type:</b>	NiMH		
<b>cell size:</b>	AA		
<b>nominal voltage:</b>	1.2 V		
<b>max. charge voltage:</b>	1.5 V	at standard charge (0.1C / 20°C)	
<b>capacity</b>			
nominal:	2100 mAh	discharge at 0.2C	
minimum:	2100 mAh	discharge at 0.2C	
	2000 mAh	discharge at 1C	
		1.0V end discharge voltage	
		ta: 20°C	
<b>max. continuous discharge current:</b>	5000 mA	ta: 0...45°C	
<b>charge</b>		current	time
standard charge:	210 mA	600 mA	14....16hrs
quick charge:	600 mA	2100 mA	4hrs
fast charge:	2100 mA		1.1hrs
recommended charge termination control parameters:	0...5 mV	- ΔV (-deltaV)	
	0.8...1 °C	temperature rise per minute	
	45...50 °C	TCO (temperature cut off)	
trickle charge current:	10...40 mA	(recommended)	
continuous overcharge: (less than 1 year)	≤ 200 mA	no conspicuous deformation no leakage	
<b>internal resistance:</b> (impedance)	≤ 40 mΩ	at 1KHz battery fully charged	
<b>life expectance:</b>	≥ 500 cycles	acc. IEC standard	
<b>self discharge</b>			
charge retention:	≥ 80 %	after 12 months storage at 20°C	
<b>initial capacity:</b>	≥ 1400 mAh	within 30 days after delivery discharge at 0.2C	
<b>ambient temperature range:</b>			
	0...45 °C	standard charge	
	10...40 °C	fast charge	
	- 20...65 °C	discharge	
	- 20...50 °C	storage (≤3months)	
	- 20...40 °C	storage (≤6months)	
	- 20...30 °C	storage (≤24months)	
QCT1:	20/2000/35		
QCT2:	30/1900/40		

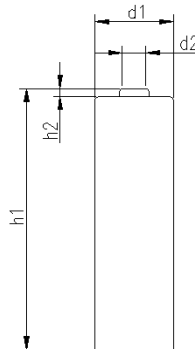
### Diagrams



### mechanical specifications

cell dimensions

diameter d1:		14.4 - 0.7	mm
diameter d2:	max.	5.5	mm
height h1:		50.5 - 0.5	mm
height h2:	min.	1.2	mm
weight:		28 ± 2	g



	<b>ANSMANN Specifications for model:</b>	<b>NiMH Battery</b>
		<b>AA - 2100mAh low self discharge</b>
	data sheet no. / part no.	
	supplier no.	702069
author / date	TG / 24.07.2018	