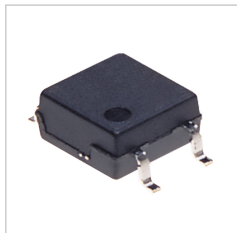




## AQY211G2S | PhotoMOS GU SOP 1 Form A High Capacity (SOP4-pin type)



※Photo may vary from actual product.

RoHS compliant

Product Number	AQY211G2S
Part Number	AQY211G2S
Details	Surface-mount terminal, Tube packing style, Load voltage:40 V
Product name	PhotoMOS GU SOP 1 Form A High Capacity (SOP4-pin type)
Features	Miniature SOP4-pin type with high capacity up to 1.6A

### Spec Detail

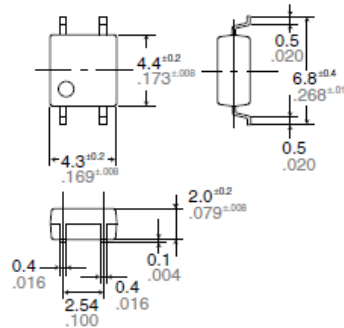
As of November 19, 2019

Specifications and design of the products are subject to change without notice for the product improvement.

Item	Specifications
Product Number	AQY211G2S
Part Number	AQY211G2S
Product name	GU SOP 1 Form A High Capacity
Type	GU
Package	SOP4
Voltage type	AC/DC
LED forward current [ $I_F$ ]	50 mA
LED reverse voltage [ $V_R$ ]	5 V
Peak forward current [ $I_{FP}$ ]	1 A
Power dissipation [ $P_{in}$ ]	75 mW
Load voltage [ $V_L$ ]	40 V
Load current	1.6 A
Continuous load current [ $I_L$ ]	1.6 A
Peak load current [ $I_{peak}$ ]	4 A
Power dissipation [ $P_{out}$ ]	400 mW
Total power dissipation [ $P_t$ ]	450 mW
I/O isolation voltage [ $V_{iso}$ ]	1,500 Vrms
Ambient temperature: Operating [ $T_{opr}$ ]	-40 to +85°C -40 to +185°F
Ambient temperature: Storage [ $T_{stg}$ ]	-40 to +100°C -40 to +212°F
LED operate current (Typical)	0.9 mA

LED operate current (Maximum)	3 mA
LED turn off current (Minimum)	0.2 mA
LED turn off current (Typical)	0.8 mA
LED dropout voltage (Typical) [ $V_F$ ]	1.32 V
LED dropout voltage (Maximum) [ $V_F$ ]	1.5 V
On resistance (Typical) [ $R_{on}$ ]	0.1 ohm
ON resistance (Maximum) [ $R_{on}$ ]	0.15 ohm
Off state leakage current (Maximum) [ $I_{Leak}$ ]	1 $\mu$ A
Over current protection	Nothing
Turn on time (Typical)	1.0 ms
Turn on time (Maximum)	3.0 ms
Turn off time (Typical)	0.12 ms
Turn off time (Maximum)	0.5 ms
I/O capacitance (Typical) [ $C_{iso}$ ]	0.8 pF
I/O capacitance (Maximum) [ $C_{iso}$ ]	1.5 pF
Initial I/O isolation resistance (Minimum) [ $R_{iso}$ ]	1,000 M ohm
Maximum switching frequency	10 cps
[Recommended operating conditions] LED current [ $I_F$ ]	Min.: 5 mA, Max.: 30 mA
[Recommended operating conditions] Load voltage [ $V_L$ ]	Max.: 32 V
[Recommended operating conditions] Continuous load current [ $I_L$ ]	Max.: 1.6 A
Terminal shape	Surface-mount terminal
Contact arrangement	1 Form A
Packing style	Tube packing style

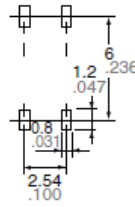
External dimensions



Terminal thickness = 0.15 .006  
 mm inch General tolerance:  $\pm 0.1 \pm .004$

Recommended mounting pad (Top view)

### Recommended mounting pad (Top view)



mm inch

Tolerance:  $\pm 0.1 \pm .004$

© Panasonic Corporation