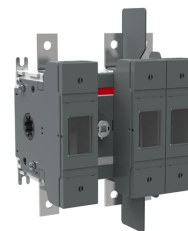


OS100GJ12



OS100GJ12 OS63GD40N1 Switch fuse



General Information

Extended Product Type	OS100GJ12
Product ID	1SCA115665R1001
EAN	6417019479842
Catalog Description	OS100GJ12 OS63GD40N1 Switch fuse
Long Description	Switch Fuses,Front Operated,3-pole, 12 (Between the Poles),Class J,100 A,Handle and shaft not included,

Popular Downloads

Data Sheet, Technical Information	1SCC311137D0201
Instructions and Manuals	1SCC110037M0206

Dimensions

Product Net Width	147 mm
Product Net Height	172 mm
Product Net Depth / Length	105 mm
Product Net Weight	1.815 kg 4 lb

Technical

Rated Operational Current AC-21A (I_e)	(500 V) 100 A (690 V) 100 A
Rated Operational Current AC-22A (I_e)	(500 V) 100 A (690 V) 100 A
Rated Operational Current AC-23A (I_e)	(500 V) 100 A (690 V) 100 A
Rated Operational Power AC-23A (P_e)	(220 ... 240 V) 45 kW (400 V) 75 kW (415 V) 75 kW (500 V) 90 kW (690 V) 132 kW
Conventional Free-air Thermal Current (I_{th})	q = 40 °C 160 A
Conventional Thermal Current (I_{the})	Fully Enclosed 160 A
Rated Impulse Withstand Voltage (U_{imp})	8 kV
Rated Insulation Voltage (U_i)	1000 V
Rated Operational Voltage	500 V for 1 s 5 kiloampere rms

Rated Short-time Withstand Current (I_{cw})	
Rated Conditional Short-Circuit Current (I_{nc})	(690 V) 80 kA
Power Loss	at Rated Operating Conditions per Pole 12 W
Pollution Degree	3
Handle Type	Handle and shaft not included
Switches Operating Mechanism	12 (Between the Poles)
Position of Line Terminals	Top In - Bottom Out Bottom In - Top Out
Fuse Size	100 A
Fuse System	Class J
Operating Mode	Front Operated
Standards	UL98 IEC 60947-3
Mounting Type	Base mounting
Number of Poles	3
Terminal Type	Lug terminals
Terminal Width	20 mm

Technical UL/CSA

Horsepower Rating UL/CSA	(acc. to UL 240 V) 30 Hp (acc. to UL 480 V) 60 Hp (acc. to UL 600 V) 75 Hp
Ampere Rating UL/CSA	100 A
Tightening Torque UL/CSA	Wire-Clamp 120 in-lb Cable Lug 50 in-lb

Certificates and Declarations (Document Number)

CCC Certificate	CCC OS100-160G_2015.pdf
Declaration of Conformity - CE	1SCC311137D2703
DNV GL Certificate	1SCC311125D0203
EAC Certificate	EAC OT_OTDC_OTL_OTP_OTR_OTU_OTE_OETL_OESA_OESC_OTM_OS_OSM_.pdf
Instructions and Manuals	1SCC110037M0206
RoHS Information	1SCC311108D0203

Container Information

Package Level 1 Units	1 piece
Package Level 1 Width	192 mm 7.56 in
Package Level 1 Depth / Length	242 mm 9.53 in
Package Level 1 Height	159 mm 6.26 in
Package Level 1 Gross Weight	2.055 kg 4.53 lb
Package Level 1 EAN	6417019479842

Classifications

Object Classification Code	Q
----------------------------	---

ETIM 4	EC001040 - Fuse switch disconnecter
ETIM 5	EC001040 - Fuse switch disconnecter
ETIM 6	EC001040 - Fuse switch disconnecter
ETIM 7	EC001040 - Fuse switch disconnecter
UNSPSC	39122233
WEEE Category	5. Small Equipment (No External Dimension More Than 50 cm)

Categories

Low Voltage Products and Systems → Switches → Switch Fuses

