

Zyklus Mini



EAN:	4013288182180	Size:	200x105x60 mm
Part number:	05135918001	Weight:	566 g
Article number:	KK Zyklus Mini 2	Country of origin:	CZ
		Customs tariff number:	82041100

- Drop-forged, full-steel ratchet design
- For screwdriving in very confined working situations
- Zyklus sockets 8790 FA for direct insertion in the Zyklus Mini 2
- Bit holder, 9 sockets, 14 bits and 1 adaptor
- In robust textile box

Ratchets and screws in a Kraftform Kompakt format. These drop-forged, full-steel ratchets, Zyklus Mini 1 and 2, combine filigree design with incredible robustness. For particularly rapid screwdriving in confined working situations. Zyklus Mini 1 or Zyklus Mini 2 can be used whenever screwdriving with power tools or conventional hand tools is unfeasible for lack of space. 1 bit ratchet Zyklus Mini 1; suitable for the take-up of bits with 1/4" hexagon head drive as per DIN ISO 1173-C 6.3 and E 6.3 and Wera connecting series 1 and 4; also possible to use 1/4" sockets by attaching the Wera adaptor 870/1. 1 socket ratchet Zyklus Mini 2; suitable for the direct attachment of Wera Zyklus special sockets 8790 FA.

Web link
https://products.wera.de/en/zyklus_ratchets_and_accessories_zyklus_mini_kk_zyklus_mini_2.html

Wera - KK Zyklus Mini 2
 05135918001 - 4013288182180

Wera Werkzeuge GmbH
 Korzter Straße 21-25
 D-42349 Wuppertal
 Tel: +49 (0)2 02 / 40 45-0
 E-Mail: info@wera.de

Zyklus Mini

Set contents:



8001 A
05073999001 1 x 1/4" x 87 mm



870/1
05136000001¹⁾ 1 x 1/4" x 25 mm
1) With friction ball; for manual nut spinner sockets



851/1 Z PH
05072070001 1 x PH 1 x 25 mm
05072072001 1 x PH 2 x 25 mm



867/1 TORX®
05066485001 1 x TX 10 x 25 mm
05066486001 1 x TX 15 x 25 mm
05066487001 1 x TX 20 x 25 mm
05066488001 1 x TX 25 x 25 mm
05066490001 1 x TX 30 x 25 mm
05066491001 1 x TX 40 x 25 mm



840/1 Z Hex-Plus
05056315001 1 x 3 x 25 mm
05056320001 1 x 4 x 25 mm
05056325001 1 x 5 x 25 mm
05056330001 1 x 6 x 25 mm

The Zyklus Mini Ratchets

Small return angle

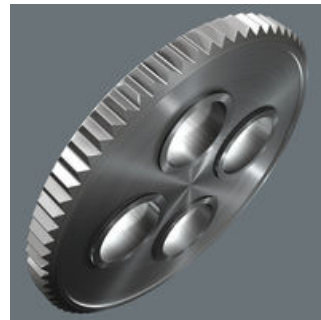
Rapid screwdriving



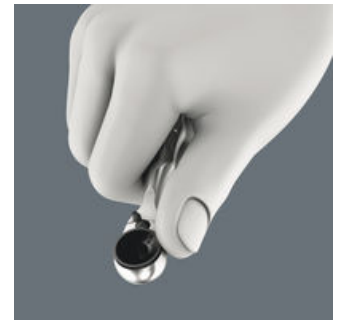
Zyklus Mini



For all difficult-to-access applications.



The fine tooth mechanism, with its 60 teeth, allows a small return angle of only 6° – ideal for precision work.



High working speeds can be attained with the Zyklus Mini 1. The thumb wheel is important, enabling more rapid screwdriving, and the Zyklus Mini handle only needs to be used for the final tightening of the screw.

Web link

https://products.wera.de/en/zyklus_ratchets_and_accessories_zyklus_mini_kk_zyklus_mini_2.html

Wera - KK Zyklus Mini 2
05135918001 - 4013288182180

Wera Werkzeuge GmbH
Korzerter Straße 21-25
D-42349 Wuppertal
Tel: +49 (0)2 02 / 40 45-0
E-Mail: info@wera.de

Zyklop Mini

Slim design



Its slim design makes it ideal for all particularly confined working situations.

Is such a small tool sufficiently resilient?



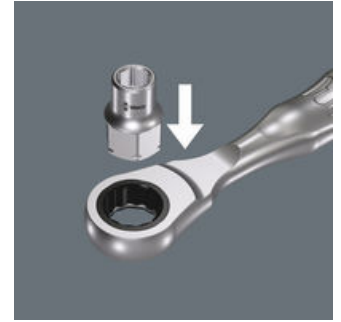
The Zyklop Mini 1 can withstand at least 65 Nm. That is far more power than can normally be transferred to such a small tool.

What parts can be connected to the Zyklop Mini 1?



Bits and sockets. Bits can be connected directly. However, a holder can be connected first and then the bit can be attached to this. This then serves as an extension with a free-turning sleeve. An adaptor e.g. Wera 870/1 is needed for sockets – 1/4" hexagonal on a square drive (included in the Bit-Check and with the individual Zyklop Mini 1 in the set).

Zyklop Mini 2



The Zyklop Mini 2 is suitable for the direct attachment of the special Wera Zyklop sockets 8790 FA. These sockets feature a very low height, ideal for confined working spaces.

Web link

https://products.wera.de/en/zyklop_ratchets_and_accessories_zyklop_mini_kk_zyklop_mini_2.html

Wera - KK Zyklop Mini 2
05135918001 - 4013288182180

Wera Werkzeuge GmbH
Korzter Straße 21-25
D-42349 Wuppertal
Tel: +49 (0)2 02 / 40 45-0
E-Mail: info@wera.de