

# Click-Torque A 5 torque wrench with reversible ratchet, 1/4" x 2.5-25 N m

Innovations and Autumn/Winter Campaign 2018/2019



<b>EAN:</b>	4013288193179	<b>Size:</b>	325x50x50 mm
<b>Part number:</b>	05075604001	<b>Weight:</b>	522 g
<b>Article number:</b>	Click-Torque A 5	<b>Country of origin:</b>	TW
		<b>Customs tariff number:</b>	82041100

- With 1/4" square drive, reversible ratchet, 45 teeth
- Easy setting and saving of the desired torque value with audible and tactile clicks when reaching the scale values
- Audible and tactile release mechanism when the set torque value is reached
- Measuring range: 2.5-25 Nm; Precise to +/- 4% as per DIN EN ISO 6789-1:2017-07
- Very robust design with ergonomic 2-component handle suitable for right-hand use

Click-Torque wrench in the unmistakable, robust Wera design with high accuracy as per DIN EN ISO 6789-1: 2017-07. Easy setting and saving of the default value. The audible and tactile clicks on reaching the scale values also facilitate the safe setting of the desired torque value. The robust release mechanism guarantees a clearly audible and tactile release signal when the set torque is reached. For right-hand use (clockwise torque-control) and with 45-tooth reversible ratchet mechanism.

## Web link

[https://products.wera.de/en/torque\\_tools\\_series\\_click-torque\\_wrenches\\_click-torque\\_torque\\_wrenches\\_with\\_reversible\\_ratchet\\_click-torque\\_a\\_5.html](https://products.wera.de/en/torque_tools_series_click-torque_wrenches_click-torque_torque_wrenches_with_reversible_ratchet_click-torque_a_5.html)

Wera - Click-Torque A 5  
05075604001 - 4013288193179

Wera Werkzeuge GmbH  
Korzter Straße 21-25  
D-42349 Wuppertal  
Tel: +49 (0)2 02 / 40 45-0  
E-Mail: [info@wera.de](mailto:info@wera.de)

Click-Torque Wrench series

Exact

Simple and safe

Simple setting



We wanted working with torque wrenches to be simple and accurate which is why we developed the Click-Torque wrenches. With the ability to set and save the default values and with the unmistakable, robust Wera design, these torque wrenches are the ideal tools for all bolting applications that require torque-controlled tightening (clockwise torque wrenches) and tightening and loosening (torque wrenches for insert tools).

Precise to  $\pm 4\%$  as per DIN EN ISO 6789-1:2017-07.

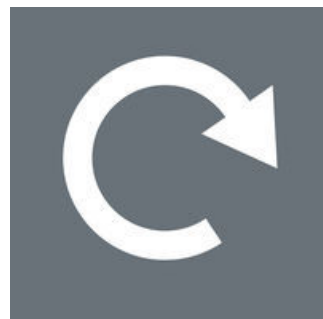
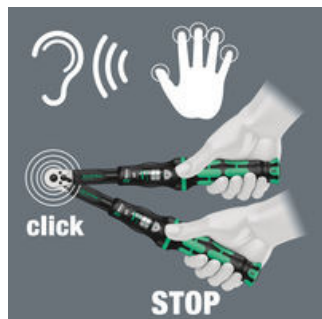
Easy setting and saving of the desired torque value; readable on the main and fine scales.

With audible and tactile clicks when adjusting the scale values.

Release mechanism

For right-handed use

Robust models

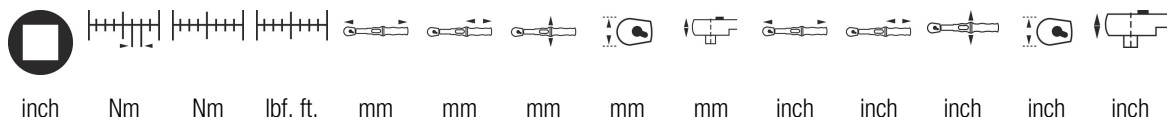


When the set torque value is reached, an audible and tactile mechanism triggers.

The reversible Click-Torque wrenches are for right-handed use.

Very robust design with reversible ratchet (45 teeth) and ergonomic 2-component handle.

Further versions in this product family:



	inch	Nm	Nm	lbf. ft.	mm	mm	mm	mm	mm	inch	inch	inch	inch	inch
05075604001	1/4"	0.10	2.5-25	1-18	290	121	42	25	11.5	11	4	1	1	7/16"
										27/64"	49/64"	21/32"		

Web link

[https://products.wera.de/en/torque\\_tools\\_series\\_click-torque\\_wrenches\\_click-torque\\_torque\\_wrenches\\_with\\_reversible\\_ratchet\\_click-torque\\_a\\_5.html](https://products.wera.de/en/torque_tools_series_click-torque_wrenches_click-torque_torque_wrenches_with_reversible_ratchet_click-torque_a_5.html)

Wera - Click-Torque A 5  
05075604001 - 4013288193179

Wera Werkzeuge GmbH  
Korzter Straße 21-25  
D-42349 Wuppertal  
Tel: +49 (0)2 02 / 40 45-0  
E-Mail: info@wera.de

Click-Torque A 5 torque wrench with reversible ratchet, 1/4" x 2.5-25 N m

Innovations and Autumn/Winter Campaign 2018/2019



**Web link**

[https://products.wera.de/en/torque\\_tools\\_series\\_click-torque\\_wrenches\\_click-torque\\_torque\\_wrenches\\_with\\_reversible\\_ratchet\\_click-torque\\_a\\_5.html](https://products.wera.de/en/torque_tools_series_click-torque_wrenches_click-torque_torque_wrenches_with_reversible_ratchet_click-torque_a_5.html)

Wera - Click-Torque A 5  
05075604001 - 4013288193179

Wera Werkzeuge GmbH  
Korzter Straße 21-25  
D-42349 Wuppertal  
Tel: +49 (0)2 02 / 40 45-0  
E-Mail: [info@wera.de](mailto:info@wera.de)