



Relays, Contactors & Switches > Switches > Toggle Switches



Configuration (Pole-Throw): **Double Pole - Double Throw**

Sealed: **Yes**

Contact Base Material: **Copper**

Switch Contact Plating Material: **Gold**

Process Sealed: **No**

## Features

### Product Type Features

Product Type	Switch
Sealed	Yes
Toggle Style	Baton Short
Switch Type	Toggle
Toggle Actuation	Vertical

### Configuration Features

Configuration (Pole-Throw)	Double Pole - Double Throw
Operating Function	On On

### Electrical Characteristics

Dielectric Strength	1000 VAC
Insulation Resistance	1000 MΩ
Contact Resistance	10 mΩ
Voltage Rating	20 V

### Body Features

Actuator Finish	Nickel
Seal Type	Terminal Seal (Epoxy)
Bushing Style	Unthreaded

### Contact Features

Contact Base Material	Copper
-----------------------	--------

Switch Contact Plating Material	Gold
---------------------------------	------

### Termination Features

Termination Type	Vertical Right Angle
------------------	----------------------

### Mechanical Attachment

Mounting Type	Through Hole
---------------	--------------

### Housing Features

Process Sealed	No
----------------	----

### Dimensions

Toggle Length	6.86 mm[.27 in] .28 in
---------------	---------------------------

### Industry Standards

UL Flammability Rating	UL 94V-1
------------------------	----------

## Product Compliance

[For compliance documentation, visit the product page on TE.com>](#)

EU RoHS Directive 2011/65/EU	Compliant with Exemptions
EU ELV Directive 2000/53/EC	Compliant with Exemptions
China RoHS 2 Directive MIIT Order No 32, 2016	Restricted Materials Above Threshold
EU REACH Regulation (EC) No. 1907/2006	Current ECHA Candidate List: JUL 2019 (201) Candidate List Declared Against: JUL 2019 (201) Pb (3.7% in Component Part)
EU REACH Regulation (EC) No. 1907/2006	Current ECHA Candidate List: JUL 2019 (201) Candidate List Declared Against: JUL 2019 (201)
Halogen Content	Not Low Halogen - contains Br or Cl > 900 ppm.
Solder Process Capability	Wave solder capable to 265°C

#### Product Compliance Disclaimer

This information is provided based on reasonable inquiry of our suppliers and represents our current actual knowledge based on the information they provided. This information is subject to change. The part numbers that TE has identified as EU RoHS compliant have a maximum concentration of 0.1% by weight in homogenous materials for lead, hexavalent chromium, mercury, PBB, PBDE, DBP, BBP, DEHP, DIBP, and 0.01% for cadmium, or qualify for an exemption to these limits as defined in the Annexes of Directive 2011/65/EU (RoHS2). Finished electrical and electronic equipment products will be CE marked as required by Directive 2011/65/EU. Components may not be CE marked. Additionally, the part numbers that TE has identified as EU ELV compliant have a maximum concentration of 0.1% by weight in homogenous

materials for lead, hexavalent chromium, and mercury, and 0.01% for cadmium, or qualify for an exemption to these limits as defined in the Annexes of Directive 2000/53/EC (ELV). Regarding the REACH Regulations, TE's information on SVHC in articles for this part number is still based on the European Chemical Agency (ECHA) 'Guidance on requirements for substances in articles' (Version: 2, April 2011), applying the 0.1% weight on weight concentration threshold at the finished product level. TE is aware of the European Court of Justice ruling of September 10th, 2015 also known as O5A (Once An Article Always An Article) stating that, in case of 'complex object', the threshold for a SVHC must be applied to both the product as a whole and simultaneously to each of the articles forming part of its composition. TE has evaluated this ruling based on the new ECHA "Guidance on requirements for substances in articles" (June 2017, version 4.0) and will be updating its statements accordingly.


## Compatible Parts



TE Model / Part # 4-1825136-5  
A101SYCQ04



TE Model / Part # 4-1825136-9  
A101SYZQ04



TE Model / Part # 1825136-7  
A101KZQ04

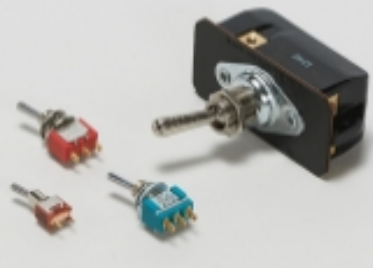


TE Model / Part # 4-1825136-3  
A101SYAQ04



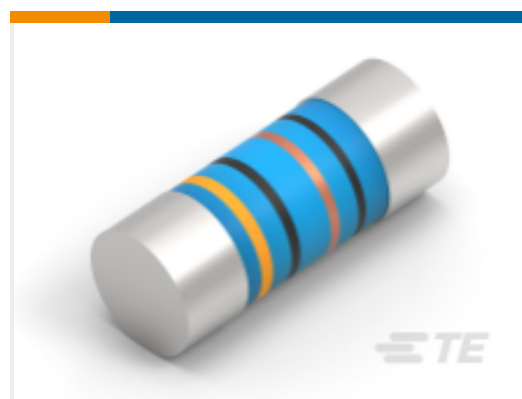
TE Model / Part # 5-1825136-9  
A108P3ZQ04

## Also in the Series | [Alcoswitch Gemini A](#)



Toggle Switches(97)

## Customers Also Bought



TE Model / Part #7-  
2176314-0  
MELF SMA-A 12R 1%  
50PPM 0102 0.3W



TE Model / Part #1-  
1614892-4  
CPF 0805 1K07 0.1%  
25PPM 1K RL



TE Model / Part #2-  
1520228-4  
7360K8=T-PAK for 0-  
1520228-4



TE Model / Part #  
1SNK506064R0000  
ZS6-BR



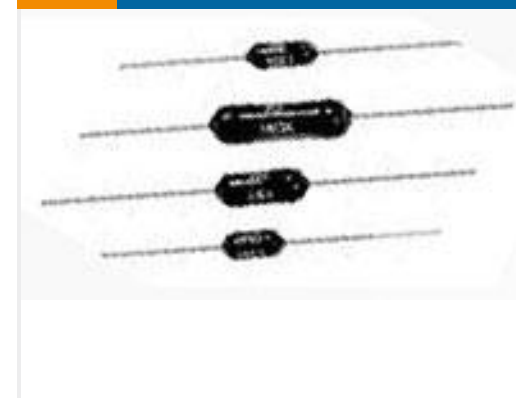
TE Model / Part #  
1SNK906303R0000  
JB6-3



TE Model / Part #6-  
1624117-7  
BMB-P 0805 470R N8



TE Model / Part #1-  
1879749-8  
LED ENCODER 12MM  
HORIZ SW GR/RD



TE Model / Part #4-  
1879663-5  
H8 309R 0.1% 15PPM



TE Model / Part #1-  
2176412-2  
5W XSM M/OX 5% 15R



TE Model / Part #1-  
2176412-6  
5W XSM M/OX 5% 22R

## Documents

### Product Drawings

[A201MD9AV2B04](#)

English

### Datasheets & Catalog Pages

[SWITCHES\\_CORE\\_PROGRAM\\_CATALOG](#)

English

[GEMINI\\_SERIES\\_SWITCHES\\_QUICK\\_REF\\_GUIDE\\_2-1773458-5](#)

English

### Product Environmental Compliance

[REACH Substance Communication Document](#)

English