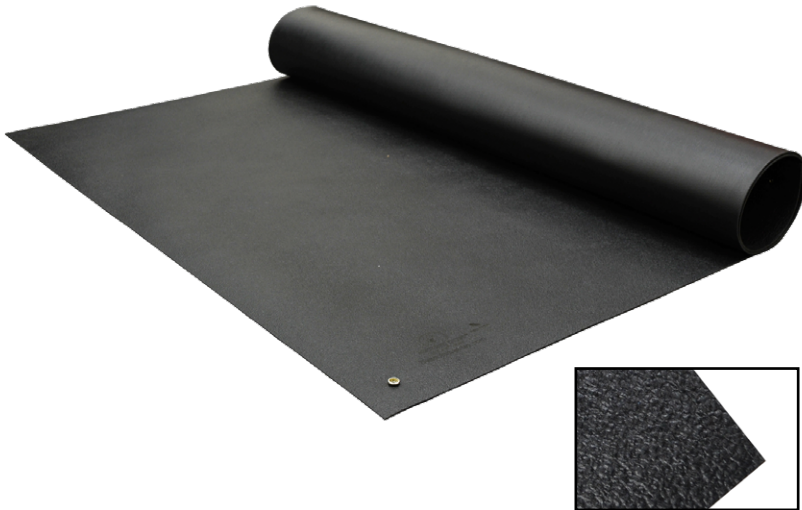




Made in the
United States of America



1964 Series Conductive Vinyl Flooring is designed to rapidly drain off static electricity meeting ANSI/ESD S20.20 tested per ANSI/ESD S4.1 & ESD TR53. Providing a static-safe conductive work area for a wide variety of applications where ESD properties are required, 1964 Series Vinyl Flooring is non-carbon loaded, non-sloughing and permanently conductive.

Properties	Typical Value
Material	Homogeneous Polymer Matrix of durable PVC
Color*	Black
Emboss Pattern	Pebble
Thickness	0.125" ± 0.013" (3.2 mm ± 0.3 mm)
Tensile	600 lb/in ²
Elongation	150 %
Tear	100 lb/in
Hardness (top)	75 ± 5 Shore A
Resistance Surface to Ground (Rtg)	< 1 x 10 ⁶
Service Temperature	-20 °F to +200 °F (-6.7 °C to +93 °C)

*Color and texture may vary between lots and mills

Floor Mat Kit Item Number

Size	Black
48" x 72" (1.2 m x 1.8 m)	1964 4X6

Floor Mat Kit Includes:

- 1 Floor Mat, size as specified
- 1 [3040](#) 15' (4.6 m) Ground Cord
- 2 Female 3/8" Snaps (Snaps installed on long side of mat)

Floor Roll Item Number without Hardware

Size	Black
36" x 60' (0.9 m x 18.3 m)	1964 3X60

RoHS, REACH and Conflict Minerals, Statement

See the Desco Industries RoHS, REACH, and Conflict Minerals Statement:
DescoIndustries.com/RoHS3.aspx

See the SCS Limited Warranty

Staticcontrol.Descoindustries.com/Limited-Warranty.aspx

1964 SERIES CONDUCTIVE VINYL FLOORING

926 JR Industrial Drive, Sanford, NC 27332
WEB SITE: StaticControl.com
PHONE: EAST: (919) 718-0000 | WEST: (909) 627-9634

**DRAWING
NUMBER**
1964

DATE
November
2019

