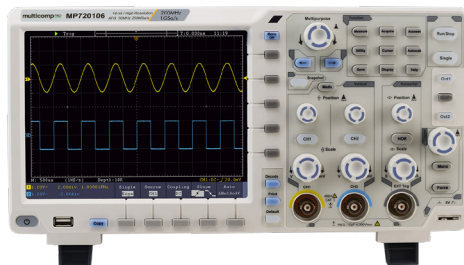


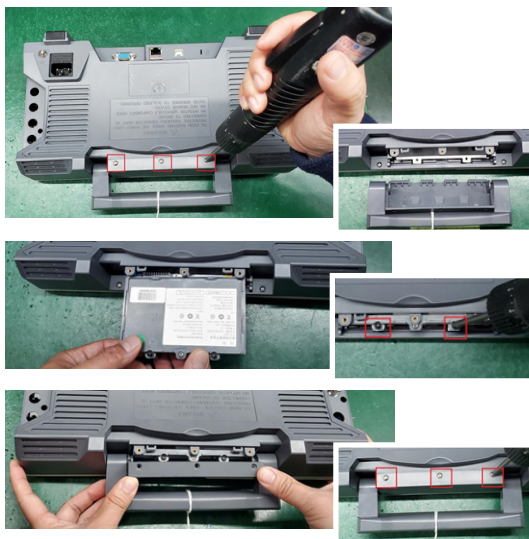
multicomp PRO



Battery installation guide for MP720025, MP720105, MP720106 & MP720107

INSTALLATION

- Remove the three screws and remove the battery cover.
- Insert the battery and attach with the two screws as shown.
- Re-fit the battery cover and replace the three screws removed previously.



INFORMATION ON WASTE DISPOSAL FOR CONSUMERS OF ELECTRICAL & ELECTRONIC EQUIPMENT.

These symbols indicate that separate collection of Waste Electrical and Electronic Equipment (WEEE) or waste batteries is required. Do not dispose of these items with general household waste. Separate for the treatment, recovery and recycling of the materials used. Waste batteries can be returned to any waste battery recycling point which are provided by most battery retailers. Contact your local authority for details of the battery and WEEE recycling schemes available in your area.



Made in China. LS12 2QQ
Man Rev 1.0