

# VFC2HL81C105K1M1#

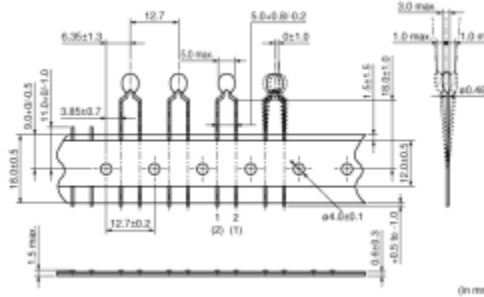
“#” indicates a package specification code.



< List of part numbers with package codes >

VFC2HL81C105K1M1A

## Appearance & Shape



## Features

VFC2H series is EMI suppression filters of lead type that combines the varistor and capacitor.

1. Suitable for absorbing surge voltages occurred from inductive load of motors, relays, etc.
2. High maximum energy
3. Smaller size, High capacitance
4. Taping is capable of fast implementation of automatic insertion.

## Applications

Automotive Usage	Powertrain/Safety
------------------	-------------------

## Packaging Information

Packaging	Specifications	Minimum Order Quantity
A	Ammo Pack	2000

### Attention

1. This datasheet is downloaded from the website of Murata Manufacturing Co., Ltd. Therefore, its specifications are subject to change or our products in it may be discontinued without advance notice. Please check with our sales representatives or product engineers before ordering.
2. This datasheet has only typical specifications because there is no space for detailed specifications. Therefore, please review our product specifications or consult the approval sheet for product specifications before ordering.

# VFC2HL81C105K1M1#

“#” indicates a package specification code.



## Specifications

Shape	Lead
Length	5.0mm
Length Tolerance	max.
Width	3.0mm
Width Tolerance	max.
Thickness	6.0mm
Thickness Tolerance	max.
Operating Temperature Range	-55°C to 150°C
Mass(typ.)	0.16g
Insulation Resistance(min.)	1MΩ
Rated Voltage	16Vdc
Varistor Voltage	22Vdc
Varistor Voltage Tolerance	+5/-0V
Capacitance	1μF
Capacitance Tolerance	±10%
Temperature Characteristics	±15% (to 125°C) +15%/-40%(125°C to 150°C)
Peak Pulse Current	200A

### Attention

1.This datasheet is downloaded from the website of Murata Manufacturing Co., Ltd. Therefore, it's specifications are subject to change or our products in it may be discontinued without advance notice. Please check with our sales representatives or product engineers before ordering.

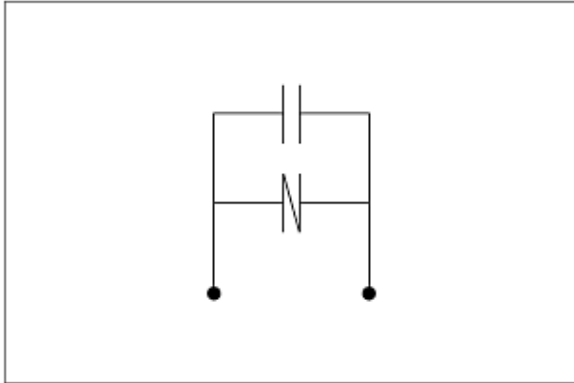
2.This datasheet has only typical specifications because there is no space for detailed specifications.

Therefore, please review our product specifications or consult the approval sheet for product specifications before ordering.

# VFC2HL81C105K1M1#

“#” indicates a package specification code.

## Product Data



Equivalent Circuit

**Attention**

- 1.This datasheet is downloaded from the website of Murata Manufacturing Co., Ltd. Therefore, it's specifications are subject to change or our products in it may be discontinued without advance notice. Please check with our sales representatives or product engineers before ordering.
- 2.This datasheet has only typical specifications because there is no space for detailed specifications.  
Therefore, please review our product specifications or consult the approval sheet for product specifications before ordering.