

To English

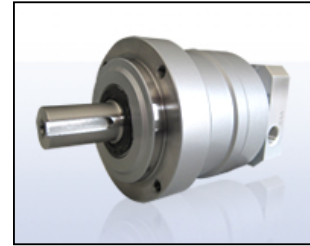
Able reducer  
**Specification sheet**

Reducer model

**VRL-155C-25-K5-38JA32****(Shaft with key)**

## 1.Reducer specification

Ratio	25
Backlash	5 arc-min
Allowable nominal torque	360 Nm
Allowable maximum torque	700 Nm
Allowable average input speed	2000 rpm
Allowable maximum input speed	4000 rpm
Allowable radial load (Applied to the output shaft center.)	6400 N
Allowable axial load (Applied to the output side bearing.)	6100 N
Approx. weight	18 kg
Moment of inertia	10 kg·cm <sup>2</sup>
Lubrication type	Grease
Color of the paint	Silver



\*The actual appearance might be different.