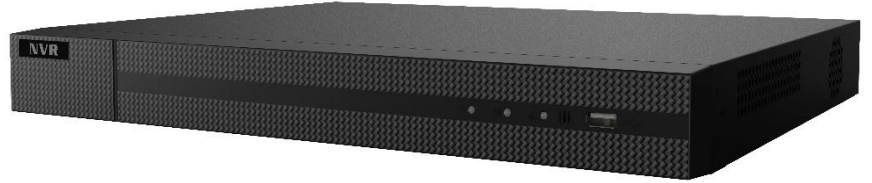


## NVR-216MH-C/16P SERIES NVR



### Key Features

#### HD Input

- H.265+/H.265/H.264/H.264+ video formats
- Connectable to the third-party network cameras
- Up to 16 IP cameras can be connected
- Recording at up to 8 MP resolution
- Supports live view, storage, and playback of the connected camera at up to 8 MP resolution

#### HD Output

- HDMI and VGA independent outputs
- HDMI Video output at up to 4K (3840 × 2160) resolution

#### HD Storage

- 2 SATA interfaces connectable for recording and backup
- H.265+ compression effectively reduces the storage space and costs by up to 75%

#### HD Transmission

- 1 self-adaptive 10/100/1000 Mbps network interface
- 16 independent PoE network interfaces are provided

#### Various Applications

- Centralized management of IP cameras, including configuration, information import/export, real-time information display, two-way audio, upgrade, etc.
- Connectable to smart IP cameras and the recording, playing back, and backing up of VCA alarms can be realized
- VCA detection alarm is supported
- Instant playback for assigned channel during multi-channel display mode
- Smart search for the selected area in the video; and smart playback to improve the playback efficiency
- Hik-Connect for easy network management

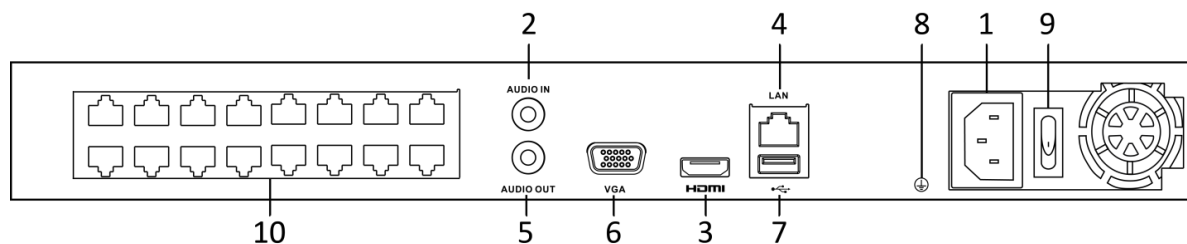
### Applicable Models

NVR-216MH-C/16P

## Specifications

Model		NVR-216MH-C/16P
Video/Audio input	IP video input	16-ch Up to 8 MP resolution
	Two-way audio	1-ch, RCA (2.0 Vp-p, 1 k $\Omega$ )
Network	Incoming bandwidth	160 Mbps
	Outgoing bandwidth	80 Mbps
Video/Audio output	Recording resolution	8 MP/6 MP/5 MP/4 MP/3 MP/1080p/UXGA /720p/VGA/4CIF/DCIF/2CIF/CIF/QCIF
	HDMI output resolution	1-ch, 4K (3840 $\times$ 2160)/30Hz, 1920 $\times$ 1080p/60Hz, 1600 $\times$ 1200/60Hz, 1280 $\times$ 1024/60Hz, 1280 $\times$ 720/60Hz, 1024 $\times$ 768/60Hz
	VGA output resolution	1-ch, 1920 $\times$ 1080p/60Hz, 1280 $\times$ 1024/60Hz, 1280 $\times$ 720/60Hz, 1024 $\times$ 768/60Hz
	Audio output	1-ch, RCA (Linear, 1 k $\Omega$ )
Decoding	Decoding format	H.265/H.265+/H.264/H.264+/MPEG4
	Live view / Playback resolution	8 MP/6 MP/5 MP/4 MP/3 MP/1080p/UXGA /720p/VGA/4CIF/DCIF/2CIF/CIF/QCIF
	Synchronous playback	16-ch
	Capability	1-ch @ 8 MP / 4-ch @ 1080p
Network management	Network protocols	TCP/IP, DHCP, Hik-Connect, DNS, DDNS, NTP, SADP, SMTP, NFS, iSCSI, UPnP™, HTTPS
Hard disk	SATA	2 SATA interfaces
	Capacity	Up to 6TB capacity for each disk
External interface	Network interface	1, RJ-45 10/100/1000 Mbps self-adaptive Ethernet interface
	USB interface	2 $\times$ USB 2.0
POE Interface	Interface	16, RJ-45 10/100 Mbps self-adaptive Ethernet interface
	Power	$\leq$ 150W
	Standard	IEEE 802.3 af/at
General	Power supply	100 to 240 VAC
	Power	$\leq$ 280W
	Consumption (without hard disk)	$\leq$ 15W
	Working temperature	-10 to +55 $^{\circ}$ C (+14 to +131 $^{\circ}$ F)
	Working humidity	10 to 90 %
	Chassis	1U chassis
	Dimensions (W $\times$ D $\times$ H)	385 $\times$ 315 $\times$ 52 mm (15.2" $\times$ 12.4" $\times$ 2.0")
	Weight(without hard disk)	$\leq$ 3 kg (6.6 lb)

## Physical Interfaces



Index	Description	Index	Description
1	Power Supply	6	VGA Interface
2	Audio In	7	USB Interface
3	HDMI Interface	8	Ground
4	LAN Network Interface	9	Power Switch
5	Audio Out	10	Network Interfaces with PoE function (16 interfaces for NVR-216MH-C/16P)